

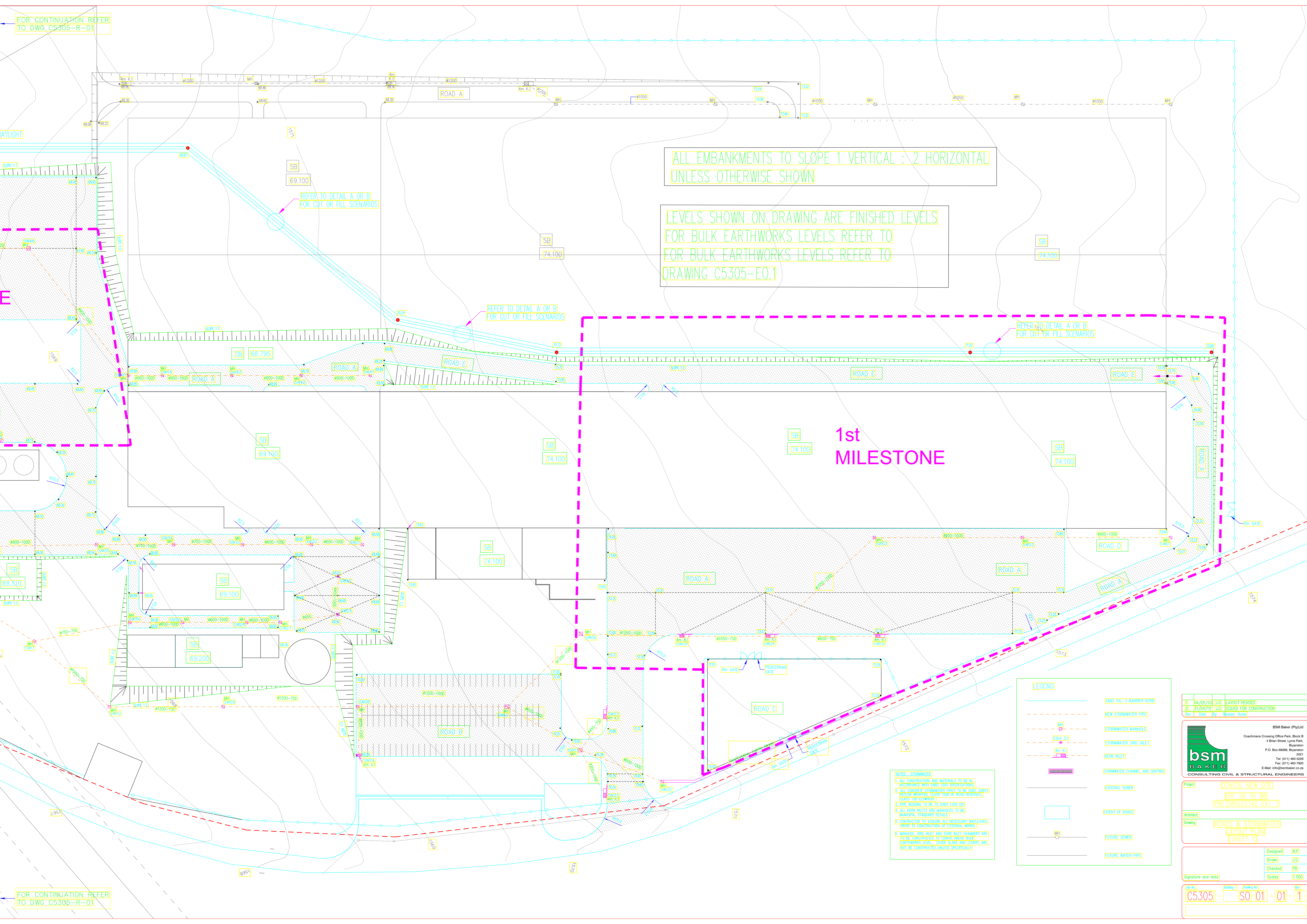
FOR CONTINUATION REFER TO DWG C5305-R-01

ALL EMBANKMENTS TO SLOPE 1 VERTICAL : 2 HORIZONTAL UNLESS OTHERWISE SHOWN

LEVELS SHOWN ON DRAWING ARE FINISHED LEVELS FOR BULK EARTHWORKS LEVELS REFER TO DRAWING C5305-E0.1

1st MILESTONE

FOR CONTINUATION REFER TO DWG C5305-R-01



**LEGEND**

- SABS FIG. 3 BARRIER KERB
- NEW STORMWATER PIPE
- STORMWATER MANHOLE
- STORMWATER GRID INLET
- KERB INLET
- STORMWATER CHANNEL AND GRATING
- EXISTING SEWER
- EXTENT OF ROADS
- FUTURE SEWER
- FUTURE WATER PIPE

**NOTES - STORMWATER**

- ALL CONSTRUCTION AND MATERIALS TO BE IN ACCORDANCE WITH SABS 1000 SPECIFICATIONS
- ALL STORMWATER STORMWATER PIPES TO BE JOINT JOINTS UNLESS OTHERWISE SPECIFIED
- PIPE BONDING TO BE TO SABS 1000 (L)
- ALL KERB INLETS AND MANHOLES TO BE MUNICIPAL STANDARD DETAILS
- CONTRACTOR TO ACQUIRE ALL NECESSARY WAYLEAVES FROM THE AUTHORITIES OF ALL APPLICABLE AGENCIES
- MANHOLE GRID INLET AND ROAD INLET CHAMBERS ARE TO BE CONSTRUCTED WITHIN ABOVE BULK EARTHWORKS LEVEL. COVER SLABS AND COVERS ARE NOT TO BE CONSTRUCTED UNLESS SPECIFICALLY

1	04/05/10	J.G.	LAYOUT REVISED
0	21/05/10	J.G.	ISSUED FOR CONSTRUCTION
Rev	Date	By	Revision Notes

**BSM Baker (Pty) Ltd**  
 Coathmans Crossing Office Park, Block B  
 4 Brian Street, Lynn Park, Bryanston  
 P.O. Box 69006, Bryanston 2021  
 Tel: (011) 463 5285  
 Fax: (011) 463 7920  
 E-Mail: info@bsmbaker.co.za

Project: CONSOL NEW SITE  
 REF: 56 TO 88  
 PRETORIUSSTAD EXT 7  
 Architect: BSM BAKER  
 Drawing: ROADS & STORMWATER LAYOUT PLAN (SHEET 1)

Designed	N.P.
Drawn	J.G.
Checked	P.B.
Signature and date	Scales: 1:500

Lab No: C5305 - SO-01 - 01 - 1

