

11/374



Tutuka Solar Energy Facility

Environmental sensitivity and layout map

Legend

- Secondary roads
- Tutuka Power Station
- Farm portions

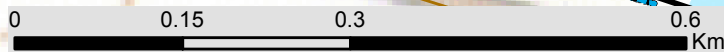
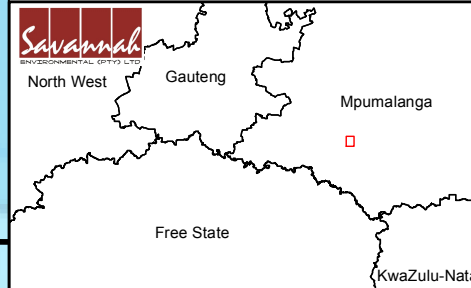
Layout Plan:

- Site Access Route
- 11/132kV Power Line
- Underground Cable
- Access to the site
- Laydown Construction Area
- O&M Building
- Proposed PV Plant Substation
- Proposed Connection Point
- PV Site

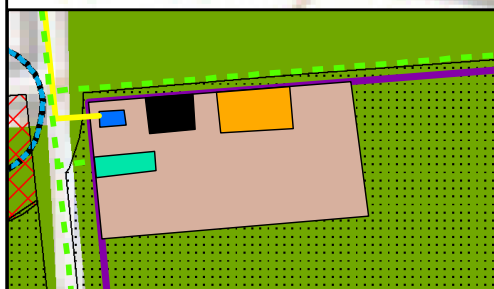
Environmental sensitivity:

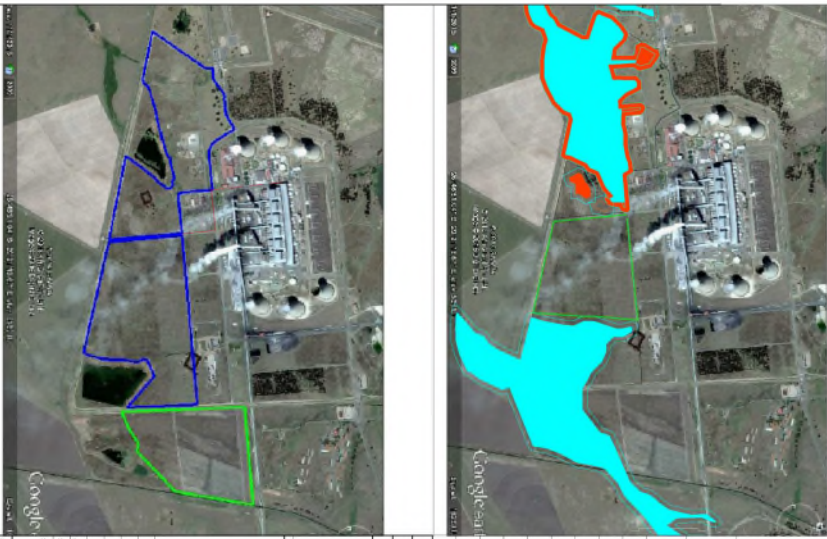
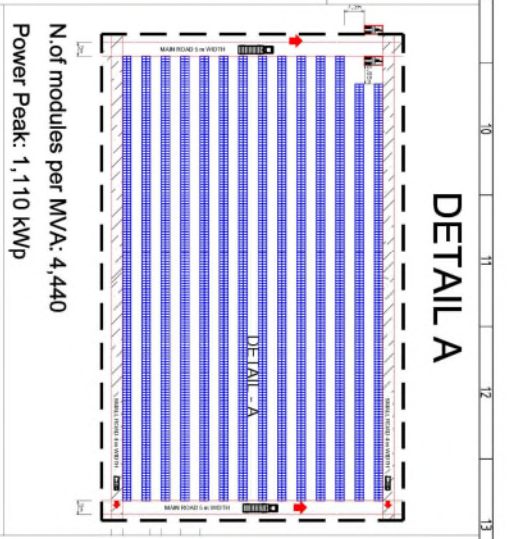
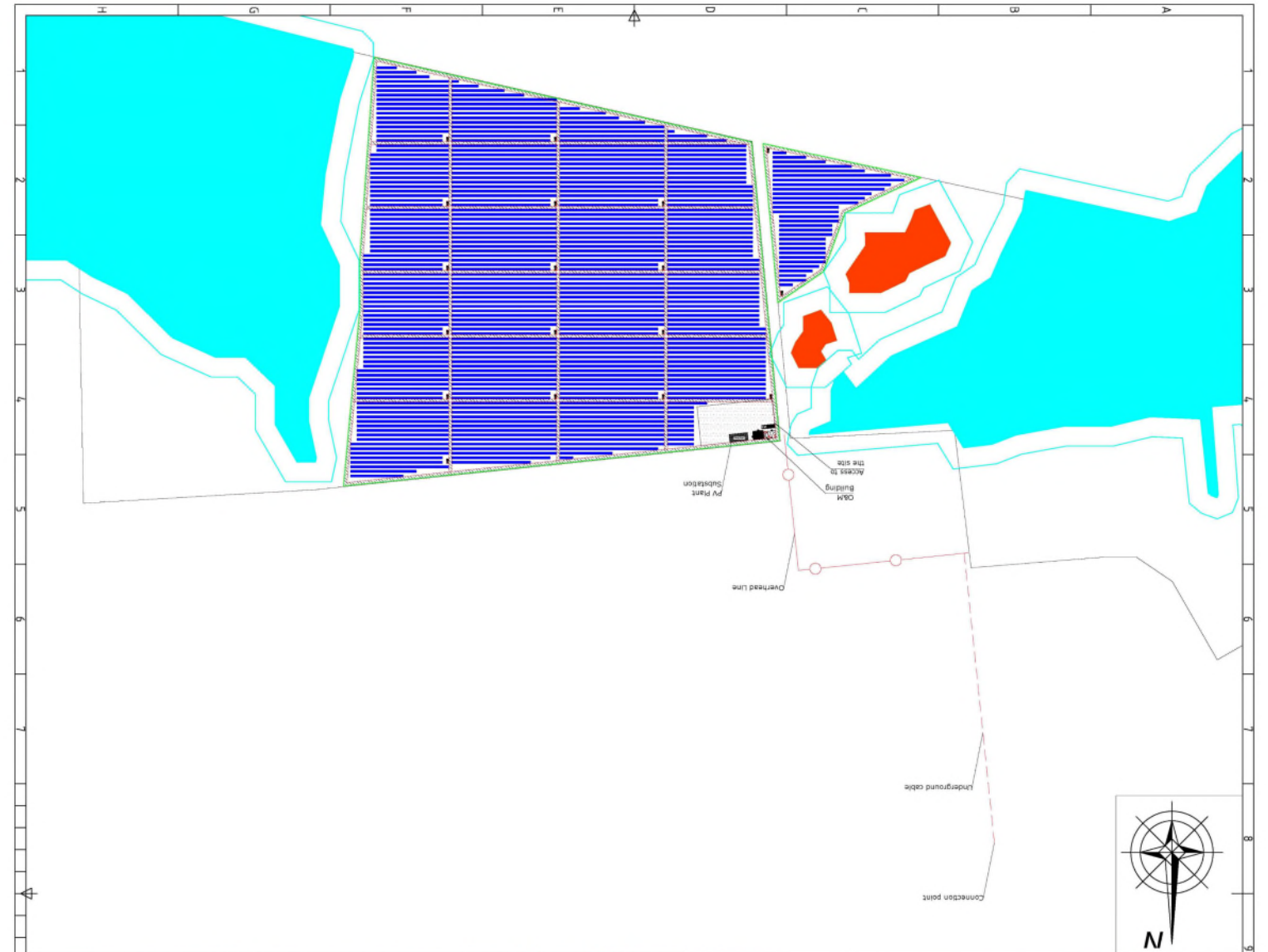
- Wetland (No-go area)
- Wetland Buffer (30m_No-go area)
- Aloe ecklonis Grassland (High Ecological Sensitivity)
- Hermannia depressa Grassland (Low Ecological Sensitivity)
- Aristida bipartita Degraded Grassland (Low Ecological Sensitivity)
- High Avifauna Sensitivity
- Medium - High Avifauna Sensitivity
- Medium - Low Avifauna Sensitivity

Scale: 1:6 750
 Projection: LQ29
 Map ref.: Tutuka PV SEF - Env sens map_22.03.16



PRETORIUS VLEY 374 IS





LEGEND

	PV ROW		OVERHEAD EVACUATION LINE
	MW CABIN		UNDERGROUND EVACUATION
	SINGLE TIER FENCE		
	WETLAND		
	WETLAND BUFFER		
	LAWN/ INTERSECTION AREA		
	INTERNAL/ MINOR ROADS 5 M WIDTH		
	PV PLANT SUBSTATION		
	GEM BUILDING		
	PARKING AREA		

Tutuka site border coordinates (WG 29)

1	33808,84110	-2963664,51601
2	24034,0670	-2963265,4570
3	34430,1300	-2963125,2320
4	34823,9390	-2963285,3390
5	34859,7010	-2963480,1140
6	35095,2370	-2963464,2590
7	35820,3220	-2963390,6110
8	36196,5440	-2963387,0280
9	36226,7800	-2964184,8920
10	35136,0620	-2963945,9150

Tutuka PV Plant Information

Food print area	37,5 Ha
indicative capacity	up to 23 MW

ESKOM HOLDING LIMITED	
GROUP TECHNOLOGY	
ESKOM ENTERPRISES PARK	
NAME	DATE
ACCREDITED: MARWA MASHAMU	
SHEET TITLE: CD014	
SUPERSEDED BY: ESKOM 180	
Tutuka PV Plant	
Indicative Layout	
Polycrystalline	
PV Modules	
SCALE	

Tutuka PV Plant 180, 1.1.E. Copyright © 2014 Google. All rights reserved. Google, the Google logo, and other marks contained herein are trademarks of Google Inc. in the United States and other countries. All other marks contained herein are trademarks of their respective owners. Google Maps and Google Earth are registered trademarks of Google Inc. in the United States and other countries.