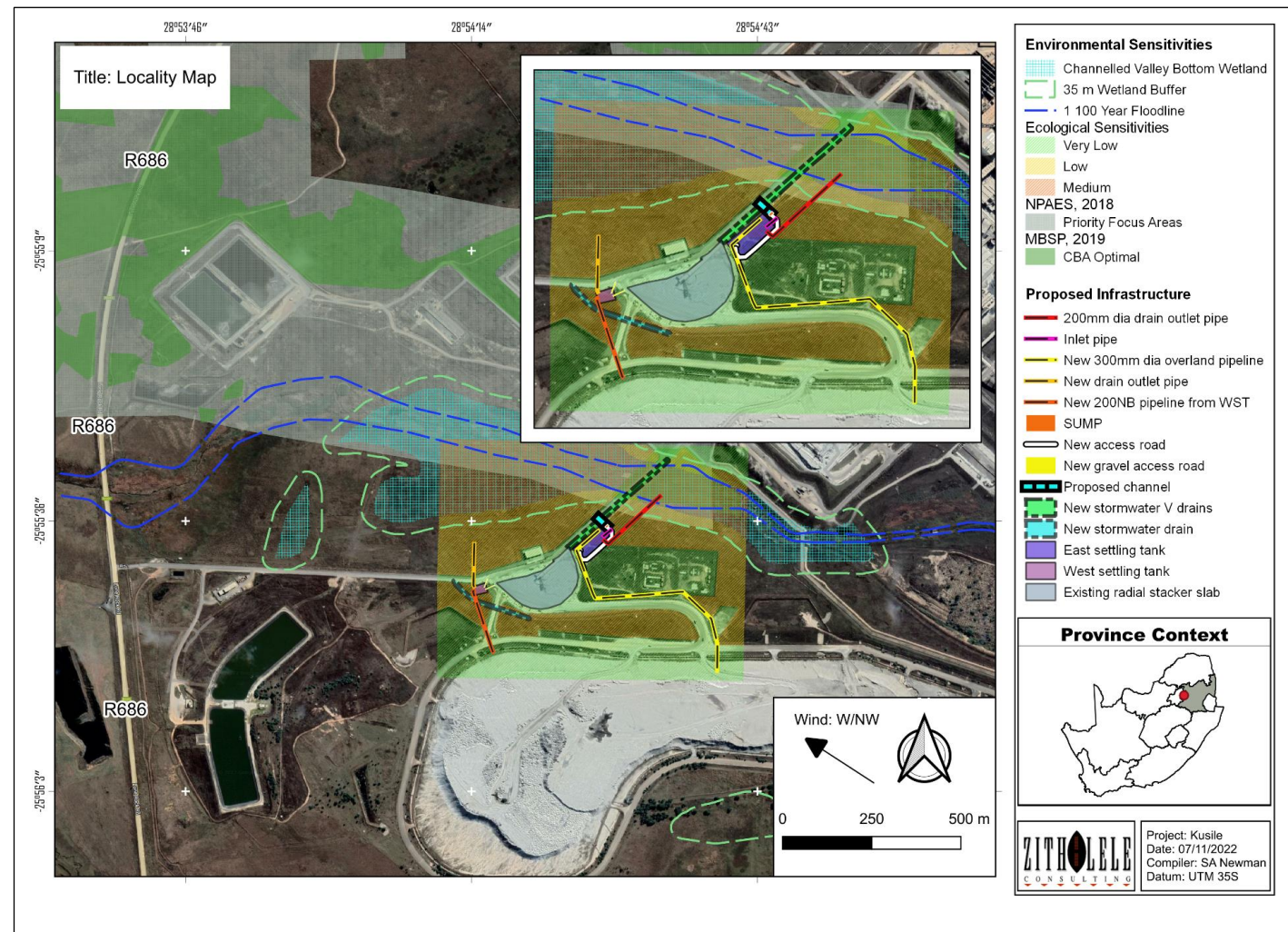


Notification of Integrated Water Use License Application (IWULA) for the Proposed Construction of Stormwater Drainage and Associated Infrastructure at the Kusile Power Station, near Delmas, Mpumalanga Province



Notice is hereby given in terms of section 41(4) of the National Water Act (Act 36 of 1998) (NWA) read in conjunction with National Environmental Management Act, (Act No. 107 of 1998) as amended (NEMA) of Eskom Holdings SOC Ltd's intent to carry out activities that require an Integrated Water Use Licence Application process. The Competent Authority is the Department of Water and Sanitation (DWS).

Nature of Proposed Activity

The proposed activities entails the construction of viz, stormwater collection channels or concrete v-drains, an Overland Conveyor Link (OLC) 1&2 collection sump with a capacity of 125m³, the East Settling Tanks (EST) comprising of two compartments and a pump sump with a total storage capacity of 5394.3m³, two 250NB interconnecting pipelines (length = 45m each) from the OLC 1&2 sump to the EST, a 300mm diameter above ground steel pipeline to transfer clarified water from the EST pump sump to the ash dump dirty water drain (length - 688m), the West Settling Tanks (WST) comprising of two compartments, and a pump sump with a total storage capacity of 1270.2m³, a 200mm diameter overland steel pipeline to transfer clarified water from the WST pump sump to the ash dump dirty water drain (length - 178m) and groundwater interception drains underneath the EST and WST foundations to drain into the environment. A gravel access road (169m) will be constructed from the sump to the EST. The proposed concrete v-drains will be located underneath the existing Overland Conveyor, and the associated infrastructure will be located near the Overland Conveyor and radial stacker at the Kusile Power Station. The proposed upgrade of the RS will deal with the blocked drain at the RS, by directing the water from the RS into the proposed drains, sumps and eventually to the Ash Disposal Facility (ADF) dirty stormwater channel leading to the Ash Dump Dirty Dam (ADDD).

Location of Proposed Development

The proposed stormwater infrastructure will be located at the Kusile Power Station within the Victor Khanye Local Municipality, near Delmas, Mpumalanga. The Power Station is located along Lone Rock Road (R686).

Legislative requirements

In terms of the National Water Act, 1998 (Act No. 36 of 1998), the following water use activities are included in the Integrated Water Use License Application (IWULA), viz, *Section 21 (c)* – Impeding or diverting the flow of water in a watercourse, *Section 21 (i)* – Altering the bed, banks, course or characteristics of a watercourse, *Section 21(g)* – Disposing of waste in a manner which may detrimentally impact on a water resource and *Section 21(j)* - Removing, discharging or disposing of water found underground if it is necessary of the efficient continuation of an activity or for the safety of the people.

Availability of the Draft Integrated Water and Waste Management Plan (IWWMP) for Public Review and Comment

Kindly note that the Draft IWWMP is available for public review and comment from 21 February 2023 to 25 April 2023 at the Delmas Public Library, Van Riebeeck Ave, Delmas Ext 8, 2210. The electronic copy of the report is available electronically at Zitholele's website: www.zitholele.co.za/environmental, under heading "Kusile Stormwater".

All stakeholders that wish to be part of this process, provide comments on the draft IWWMP, and stay informed throughout the process are urged to register as an Interested and Affected Party (I&AP) by submitting your contact details and interest on the project to the Public Participation Process (PPP) desk at the contact details provided. Alternatively, SMS the word "Kusile Stormwater" to 45776.

The PPP desk can be contacted as follows:

Zitholele Consulting (Pty) Ltd, Ms. Natasha Lalie, P.O. Box 6002, Halfway House, 1685, Tel: 011 207 2060, Fax: 086 674 6121, E-mail: kusile@zitholele.co.za