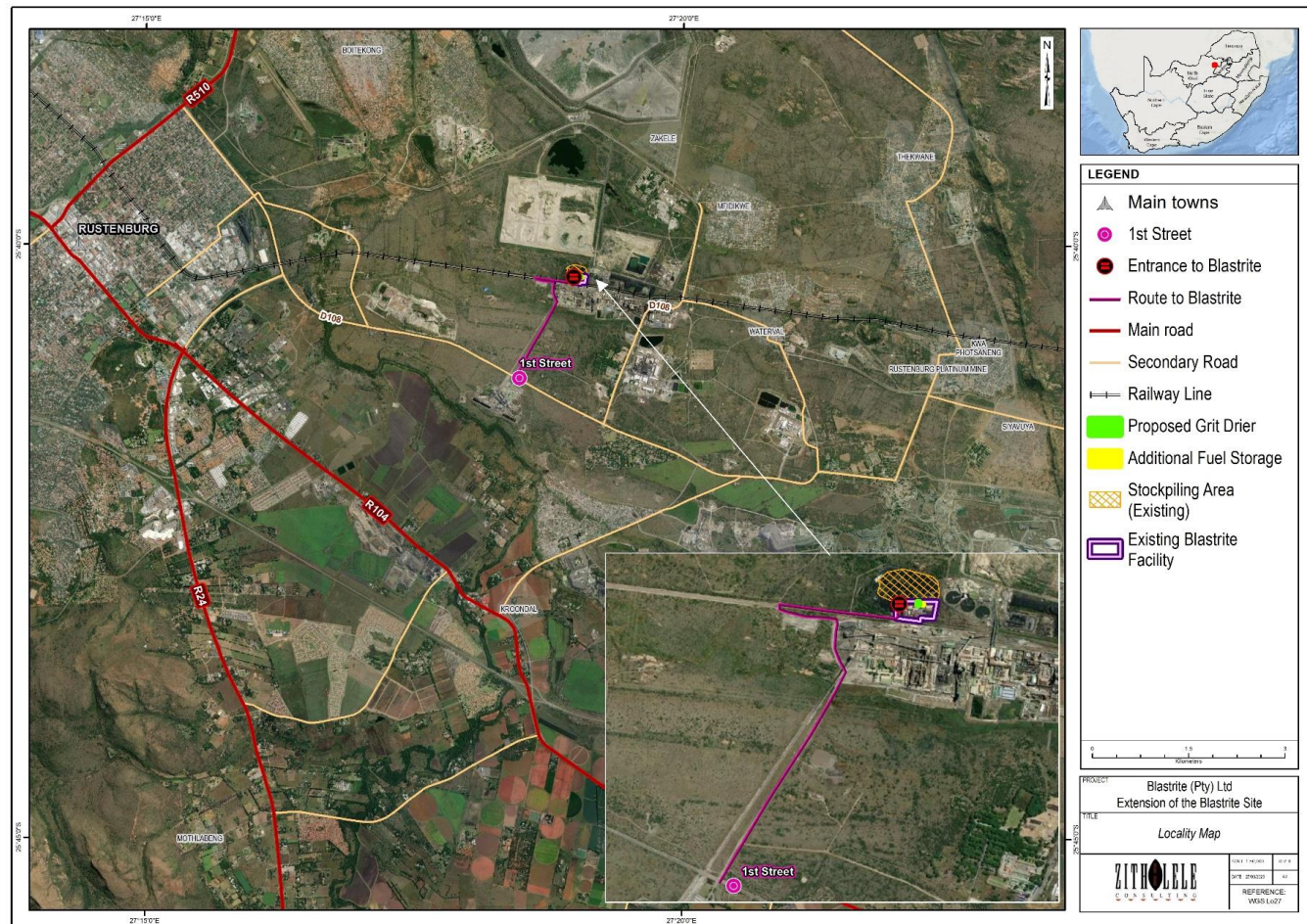


# Notification of Application for Environmental Authorisation, Water Use Authorisation and Air Emissions License (AEL) Processes for the Proposed Expansion of the Blastrite site located on Portion 58 of the Farm Waterval 303JQ, in Rustenburg, Rustenburg, North West Province



## PUBLIC COMMENT ENCOURAGED

Please submit your comments on the BAR by no later than 21 July 2023 to the contact persons/details as listed below. Information regarding the above processes can also be requested from the Public Participation Office at the contact details provided herein.

All stakeholders that wish to provide comments on the BAR, the AEL and WULA processes and stay informed throughout the process are urged to register as an Interested and Affected Party (I&AP) by submitting your contact details and interest on the project to the Public Participation Process (PPP) desk at the contact details provided. Alternatively, SMS the word "Blastrite" to 45776. Further communication relating to the project will only be undertaken with registered I&APs. The PPP desk can be contacted as follows:

Zitholele Consulting (Pty) Ltd  
 Contact Person: Ms. Natasha Lalie  
 P O Box 6002, Halfway House, 1685  
 Tel: (011) 207 2060, Fax: 086 674 6121  
 or Email: [blastrite@zitholele.co.za](mailto:blastrite@zitholele.co.za)

Notice is hereby given that Blastrite (Pty) Ltd (the Applicant) has applied for Environmental Authorisation (EA) for the above-mentioned project. An EA is required by way of a Basic Assessment (BA) Process, from the North West Department of Economic Development, Environment, Conservation and Tourism (NW EDEC&T) in terms of the Environmental Impact Assessment (EIA) Regulations, 2014 (as amended), promulgated in terms of the National Environmental Management Act, 1998 (Act 107 of 1998) (NEMA). Zitholele Consulting (Pty) Ltd has been appointed as the independent Environmental Assessment Practitioner (EAP) by Blastrite to undertake the environmental authorisation process.

### Nature of Proposed Activity

The site is accessed from 1<sup>st</sup> Street, opposite Bathopele Platinum Mine in Rustenburg. There are currently stockpiles of platinum slag on site that comes from the Waterval Smelter in Rustenburg and the Mortimer Smelter situated in the Limpopo Province. The applicant proposes to store in excess of 100 000 tons of platinum slag in stockpiles on site within the existing site footprint, and also proposes to install a new grit drier on site to dry the slag material for packaging. There are existing fuel reserves on the site (75.6m<sup>3</sup>). Additional above ground fuel storage tanks are proposed within the existing bunded area. The cumulative storage of the fuel on site will be above 80m<sup>3</sup> with the additional fuel storage proposed.

### Legislative requirements

The proposed expansion of the stockpiling activities, additional fuel storage and installation of the drier will trigger several listed activities in terms of the EIA regulations, 2014 (as amended) i.e Listing Notice 1 (GN R.983) as amended. The proposed development will also trigger Section 21 (c) and (i) water uses in terms of the National Water Act, No.36 of 1998. The processing, recovery and use of metallurgical slag for the expanded operations triggers Activity No. 4.20 of the National Environmental Management: Air Quality Act, 2004 (Act No. 39 of 2004) (NEM:AQA). The drying of mineral solids, including ore, using combustion installations and production licence in terms of national or capacity greater than 100 tons per month triggers activity number 5.2 of the NEM:AQA.

A Basic Assessment process, Water Use Authorisation process and Air Emissions License (AEL) process will therefore be undertaken to authorise the proposed activities associated with the proposed development.

### Draft Basic Assessment Report for Public Review

The Draft Basic Assessment Report (BAR) provides more details of the above project and is available for public review and comment from 19 June 2023 to 21 July 2023. The report is available at the Rustenburg Public Library (153 Smit Street, Rustenburg, 2999) and on the Zitholele Consulting's website: [www.zitholele.co.za/environmental/](http://www.zitholele.co.za/environmental/) under the heading "Blastrite BAR".