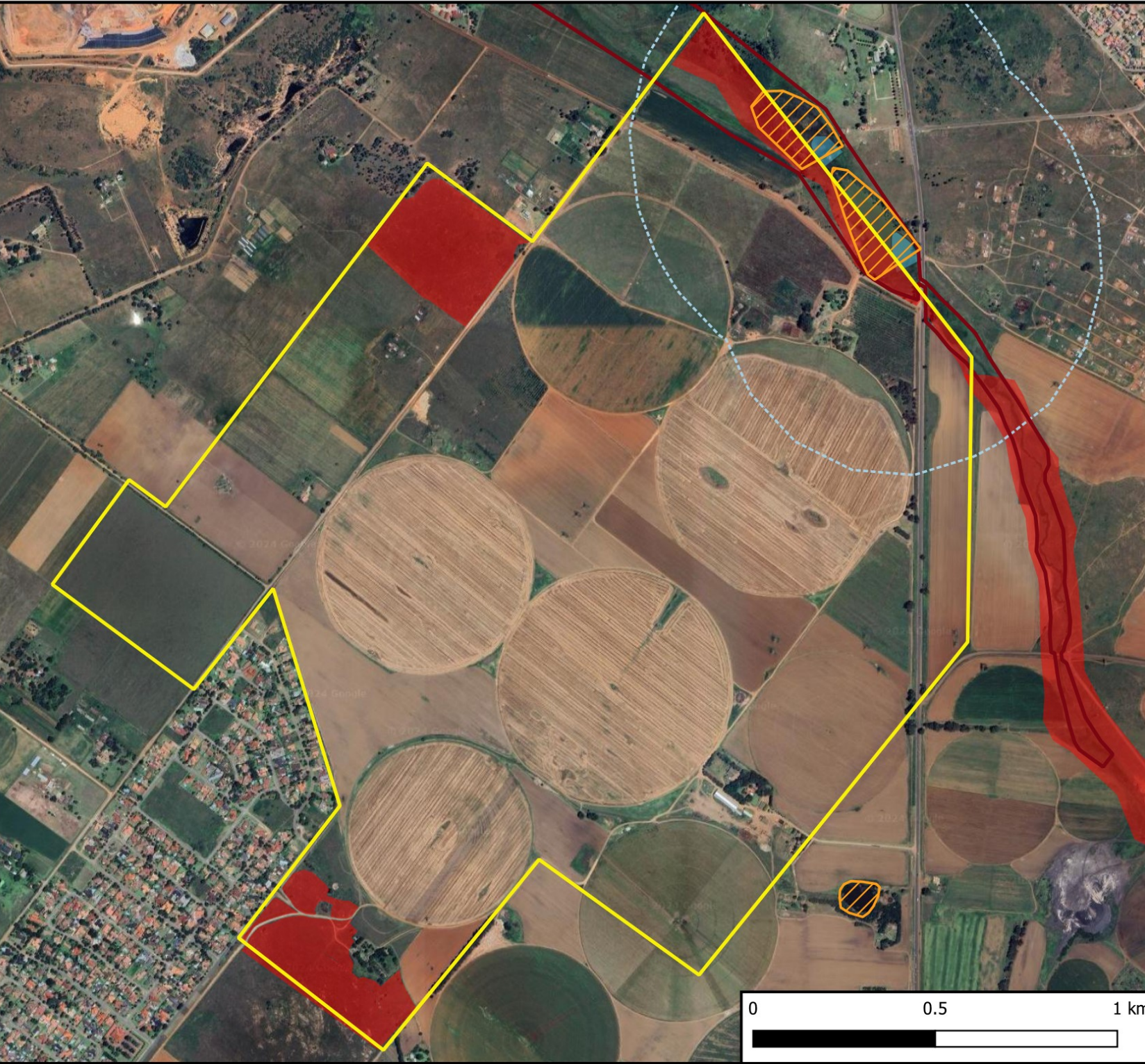


# Vlakfontein Colliery: Combined Sensitivities



## Legend

— Vlakfontein Mine Area

### NFEPA

Wetlands

500 m Wetland Buffer

### Terrestrial Sensitivity

High sensitivity

### High Aquatic sensitivity

Artificial impoundment

Channelled valley bottom wetlands



**canyoncoal** | Glubay Coal (Pty) Ltd

**Dr Michelle Thompson**  
on behalf of Menco

{T} 012 004 0362

{C} 071 869 9042

E-Mail: [michelle@menco.co.za](mailto:michelle@menco.co.za)

Web: [www.menco.co.za](http://www.menco.co.za)

