

Zitholele Consulting (Pty) Ltd

Reg. No. 2000/000392/07

PO Box 6002 Halfway House 1685, South Africa
 Building 1, Maxwell Office Park, Magwa Crescent West
 c/o Allandale Road & Maxwell Drive, Waterfall City, Midrand
 T : 011 207 2060 W : www.zitholele.co.za E : mail@zitholele.co.za

**Our Ref: 24019-83-let-001****6 May 2025****Dear Interested and affected party**

Dear Sir/Madam,

Notification of Application for Environmental Authorisation and Water Use Authorisation Processes for the proposed improvement of N14-Section 12 from Coligny (km 0.0) to Ventersdorp (km 58.40) and establishment of borrow pits at various locations, in North-West Province

- NOTIFICATION OF AVAILABILITY OF DRAFT SCOPING REPORT FOR PUBLIC REVIEW AND COMMENT**

Notice is hereby given that South African National Roads Agency Limited (SANRAL) (the Applicant) has applied for Environmental Authorisation (EA) for the above project. An EA is required by way of a Scoping and Environmental Impact Reporting (S&EIR) process, from the Competent Authority, Department of Forestry, Fisheries and the Environment (DFFE) in terms of the Environmental Impact Assessment (EIA) Regulations, 2014 (as amended), promulgated in terms of the National Environmental Management Act, 1998 (Act 107 of 1998) (NEMA). Zitholele Consulting (Pty) Ltd has been appointed as the independent Environmental Assessment Practitioner (EAP) to undertake the environmental authorisation process.

SANRAL proposes to upgrade the N14-Section 12 from Coligny (km0) to Ventersdorp (km58.4) in North West Province by widening certain sections, strengthening the pavement, re-aligning of the N14, construction of a road above the railway line, upgrade to existing culverts and bridges, construction of new bridges and culverts, upgrade to several intersections, and construction of an interchange.

Material for the road upgrade will be obtained from thirteen borrow pits to be established, as follows:

Potential source/Borrow pit	Approximate site centre
Existing borrow pit	26° 18' 05.66"S 26° 46' 15.96"E
BP04	26° 20' 27.76"S 26° 47' 31.14"E
Outcrop 1.0 (Part 1)	26° 20' 15.19"S 26° 44' 04.61"E
Outcrop 1.0 (Part 2)	26° 20' 25.46"S 26° 44' 01.91"E
Diabase cut	26° 20' 36.60"S 26° 43' 30.94"E
BP01	26° 20' 28.08"S 26° 18' 07.96"E

Potential source/Borrow pit	Approximate site centre
Granite quarry	26° 20' 46.61"S 26° 20' 11.20"E
BP02	26° 20' 41.97"S 26° 20' 21.88"E
Site 1: Boulder field	26° 20' 18.56"S 26° 22' 37.88"E
Gravel cut 1	26° 20' 18.53"S 26° 38' 45.10"E
BP03	26° 20' 45.88"S 26° 39' 42.74"E
Quarry cut	26° 20' 43.04"S 26° 39' 51.01"E
New B1103	26° 19' 49.71"S 26° 29' 17.85"E

In terms of Listing Notice (LN) 1 (GNR No. 983) of the EIA Regulations, 2014 (as amended) the proposed road upgrade will trigger listed activities 12, 19, 21E, 27 and 56, and listed activity 27 of LN 2 (GNR No. 984) and listed activities 12, 14, 18 and 23 of LN 3 (GNR No. 985). The proposed road upgrade and borrow pits occurs within the 500m regulated area of the wetlands. Therefore, a Water Use License Application (WULA) will be required in terms of Section 21 (c) and 21 (i) of the National Water Act, 1998 (Act No. 36 of 1998). An authorisation into Section 106 of the Mineral Petroleum Resources Development Act (MPRDA) is required for the proposed borrow pits from Department of Mineral Resources and Energy (DMRE).

- **AVAILABILITY OF DRAFT SCOPING REPORT**

The Draft Scoping Report will be available for public review from 6 May 2025 to 5 June 2025. Please submit comments on the Draft Scoping Report by no later than 5 June 2025.

The Draft Scoping Report and associated Appendices are available at the following public venues and virtual locations to peruse and download:

- Coligny Library, Mark Street, Coligny, 2725
- Ventersdorp Library, Van Tonder Crescent, Ventersdorp 2710
- Zitholele Consulting's website: www.zitholele.co.za/environmental/ under the heading "SANRAL N14-Section 12 Road Upgrade".

An electronic copy of the report can be made available on request at email address: N14Section12@zitholele.co.za

- **SUBMIT YOUR COMMENTS**

All stakeholders that wish to provide comments on the Draft Scoping Report, authorisation for the borrow pits and WULA processes, and stay informed throughout the process are urged to register as an Interested and Affected Party (I&AP) by submitting your contact details and interest on the project to the Public Participation Process (PPP) desk at the contact details provided. The PPP desk can be contacted as follows:

Zitholele Consulting (Pty) Ltd, Ms. Natasha Lalie, P.O. Box 6002, Halfway House, 1685, Tel: 011 207 2060, Fax: 086 674 6121, E-mail: N14Section12@zitholele.co.za

Yours faithfully,

Project Manager



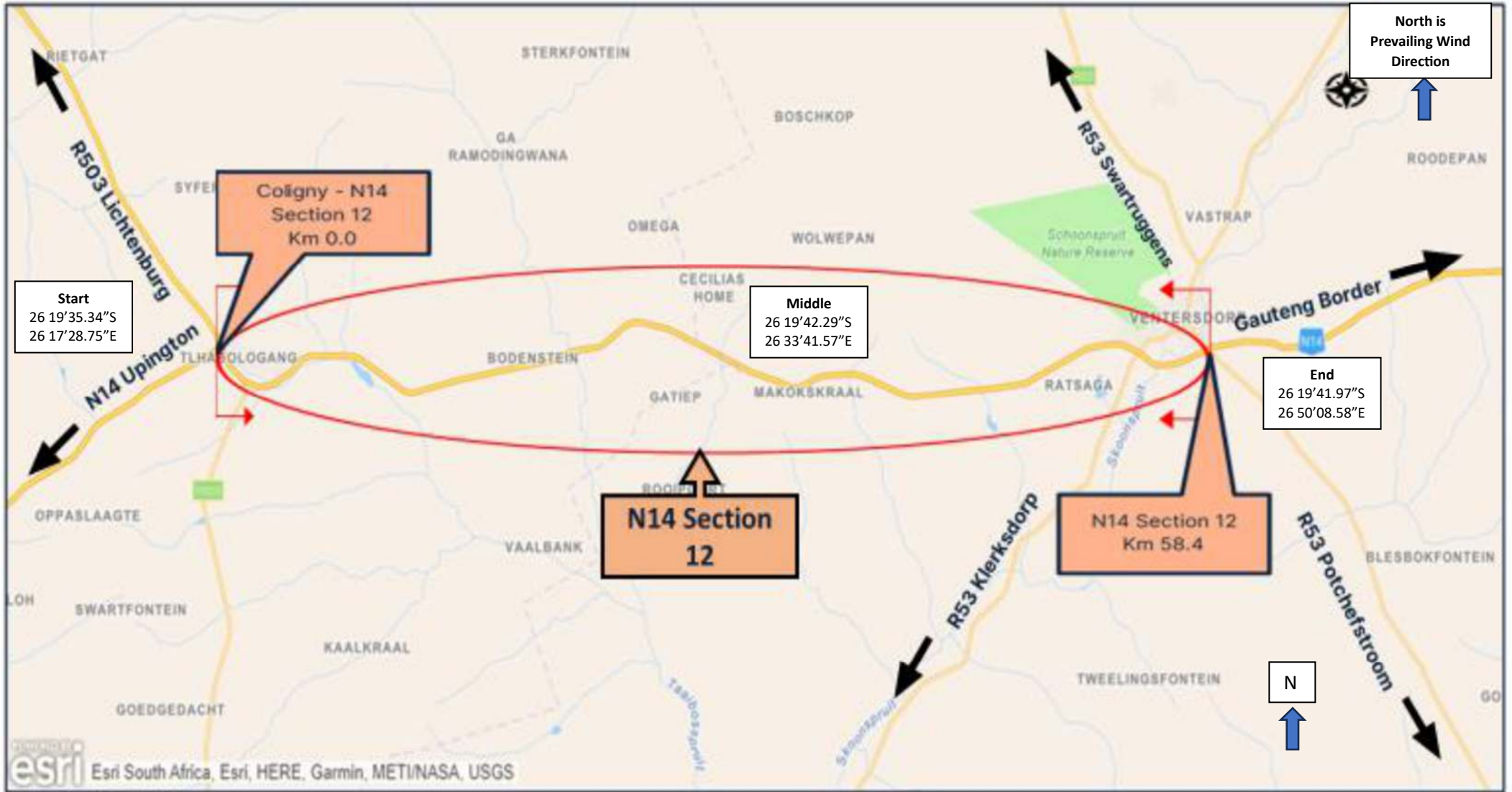
Ms. Natasha Lalie

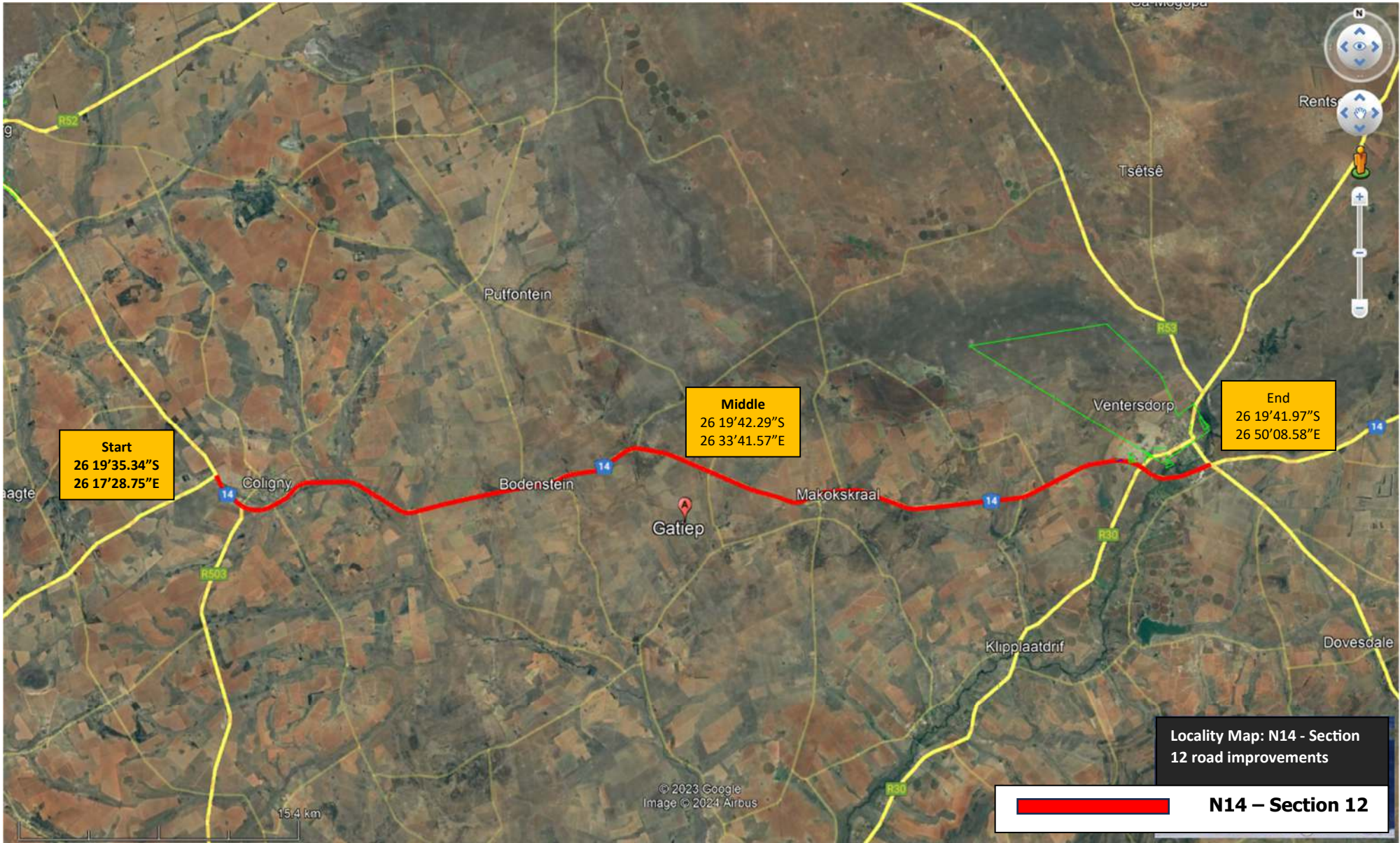
ZITHOLELE CONSULTING (PTY) LTD

Attachments : Locality Map for Proposed N14-Section 12 Road Upgrade

Locality Maps for the Proposed Borrow Pits

Z:\Projects\24019 - N14 Coligny Road BA\8 Stakeholder Engagement\83 Notification & Newsletters\24019-31-let-001-Notification letter
- DSR- Rev0. Draft1.docx





Start
26 19'35.34\"/>

Middle
26 19'42.29\"/>

End
26 19'41.97\"/>

Locality Map: N14 - Section 12 road improvements

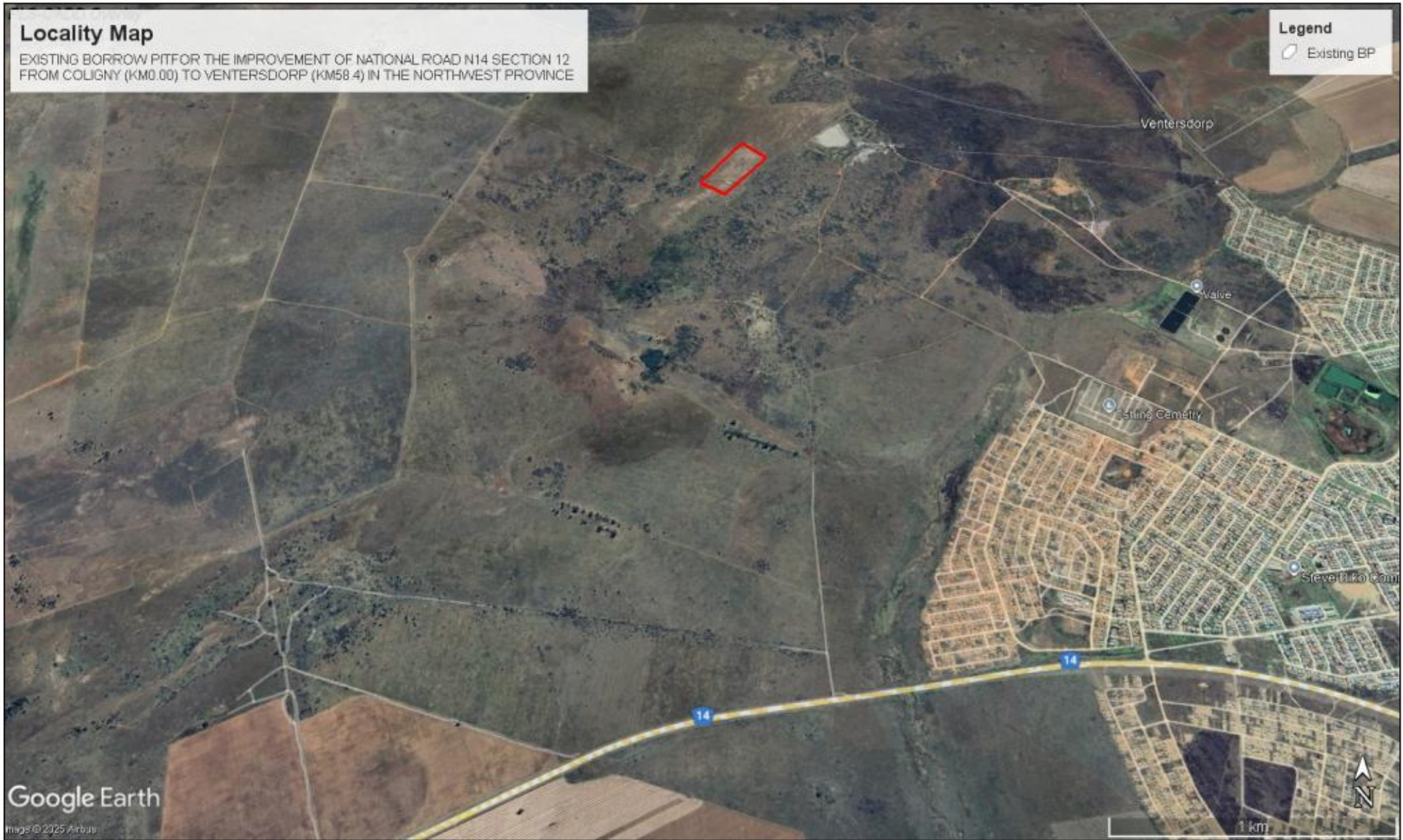
 **N14 – Section 12**

Locality Map

EXISTING BORROW PIT FOR THE IMPROVEMENT OF NATIONAL ROAD N14 SECTION 12 FROM COLIGNY (KM0.00) TO VENTERSDORP (KM58.4) IN THE NORTHWEST PROVINCE

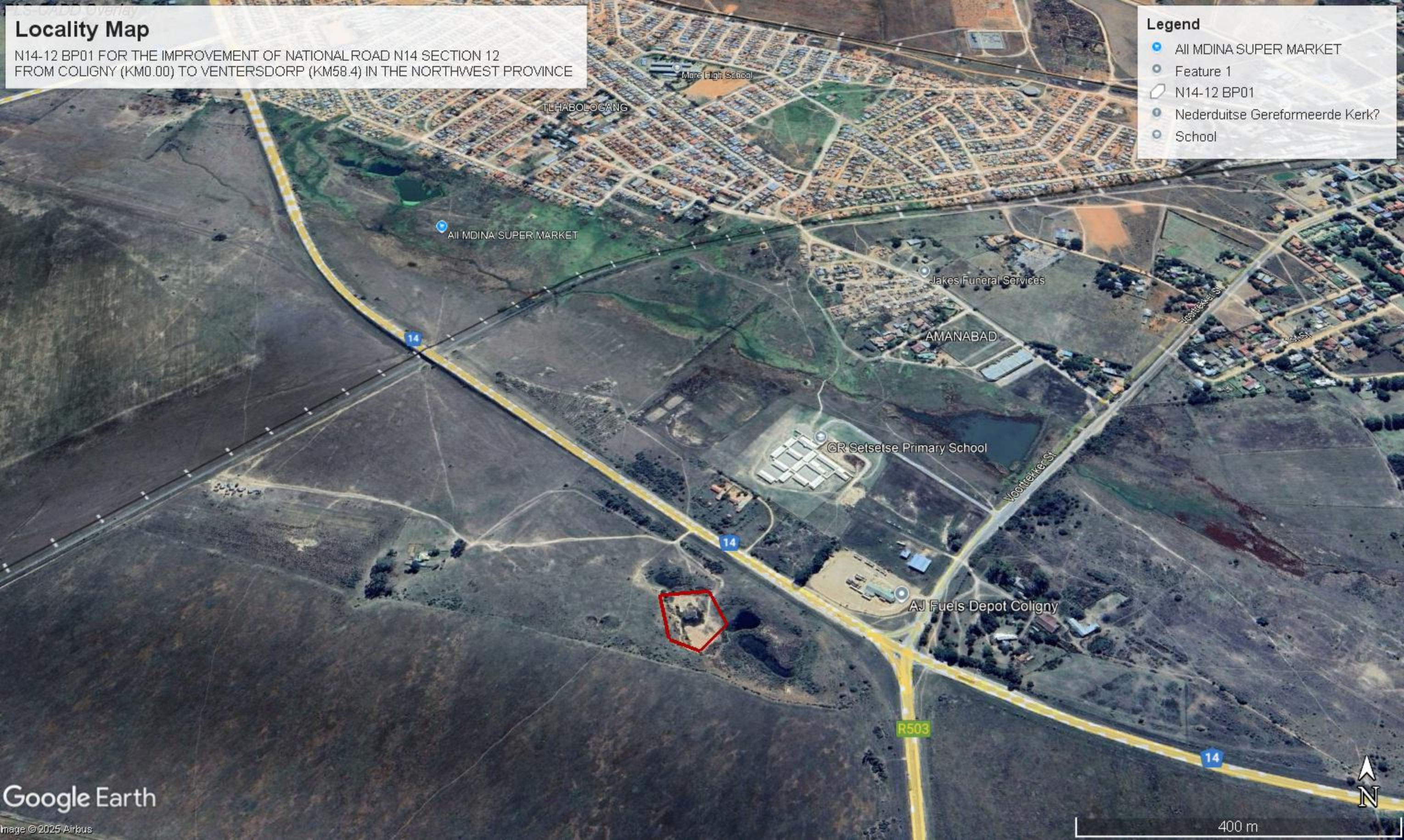
Legend

Existing BP



Google Earth

Image © 2025 Airbus



Locality Map

N14-12 BP01 FOR THE IMPROVEMENT OF NATIONAL ROAD N14 SECTION 12 FROM COLIGNY (KM0.00) TO VENTERSDORP (KM58.4) IN THE NORTHWEST PROVINCE

Legend

- AII MDINA SUPER MARKET
- Feature 1
- N14-12 BP01
- Nederduitse Gereformeerde Kerk?
- School

AII MDINA SUPER MARKET

Mare High School

TLHABOLOCANG

Jakes Funeral Services

AMANABAD

GR Setsetse Primary School

Voorrekker St

AJ Fuels Depot Coligny

R503

14





Locality Map

N14-12 BP02 FOR THE IMPROVEMENT OF NATIONAL ROAD N14 SECTION 12 FROM COLIGNY (KM0.00) TO VENTERSDORP (KM58.4) IN THE NORTHWEST PROVINCE

Legend

- N14-12 BP02

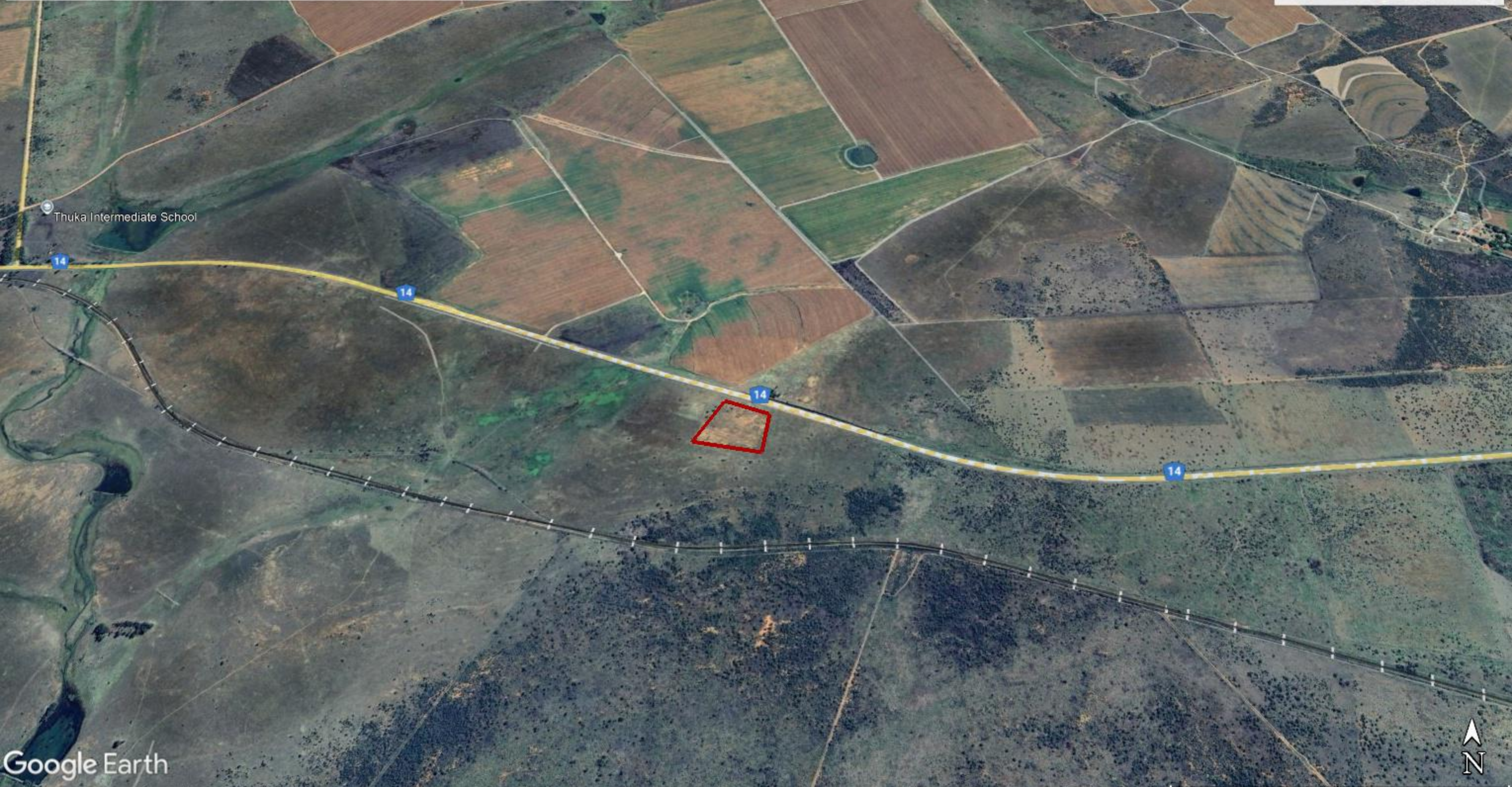


Locality Map

N14-12 BP03 FOR THE IMPROVEMENT OF NATIONAL ROAD N14 SECTION 12 FROM COLIGNY (KM0.00) TO VENTERSDORP (KM58.4) IN THE NORTHWEST PROVINCE

Legend

- N14-12 BP03
- Thuka Intermediate School



Locality Map
N14-12 BP03 FOR THE IMPROVEMENT OF NATIONAL ROAD N14 SECTION 12
FROM COLIGNY (KM0.00) TO VENTERSDORP (KM58.4) IN THE NORTHWEST PROVINCE
Area Extent: 1.6846 ha

Legend
N14-12 BP04




Locality Map

N14-12 Diabase Cut FOR THE IMPROVEMENT OF NATIONAL ROAD N14 SECTION 12 FROM COLIGNY (KM0.00) TO VENTERSDORP (KM58.4) IN THE NORTHWEST PROVINCE

Area Extent: 0.8231 ha

Legend

-  N14-12 Diabase Cut






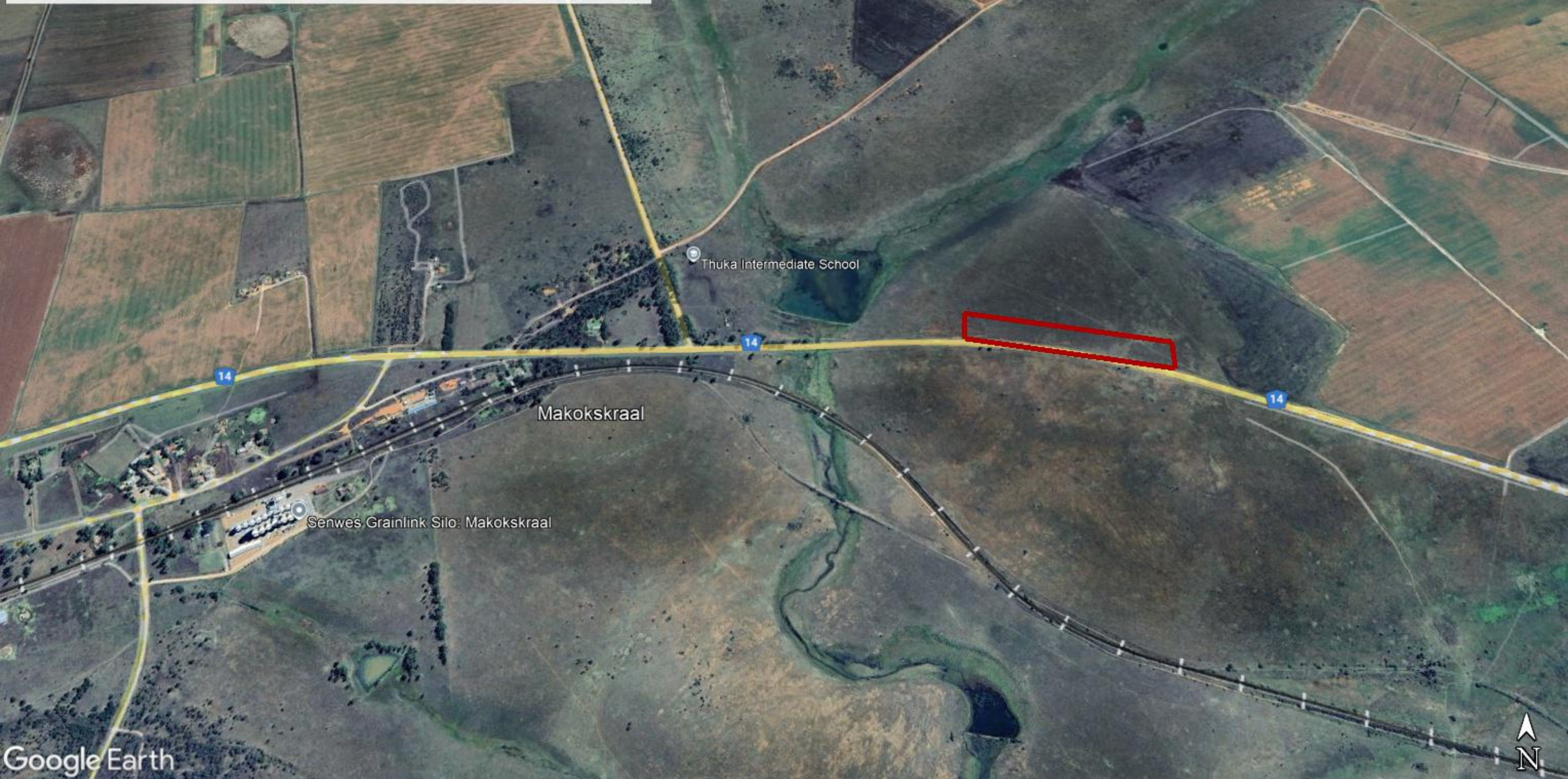
Locality Map

N14-12 Gravel Cut 1 FOR THE IMPROVEMENT OF NATIONAL ROAD N14 SECTION 12 FROM COLIGNY (KM0.00) TO VENTERSDORP (KM58.4) IN THE NORTHWEST PROVINCE

Area Extent: 4.9234 ha

Legend

-  N14-12 Gravel Cut 1
-  Senwes Grainlink Silo: Makokskraal
-  Thuka Intermediate School





Locality Map
Outcrop 1.0 (Part 2) borrow pit/material source required for the proposed improvements to N14-Section 12 from Coligny (km0) to Ventersdorp (km58.4), North West Province
Area extent 4.44ha

Legend
[Red Outline] Outcrop 1.0 (Part 2)

Image © 2025 Airbus

1985

814 m

Imagery Date: 4/24/2023 26°19'32.27" S 26°43'33.52" E elev 1474 m eye alt 4.93 km

Locality Map
Outcrop 1.0 (Part 1) borrow pit/material source required for the proposed improvements to N14-Section 12 from Coligny (km0) to Ventersdorp (km58.4), North West Province
Area extent 4.29ha




Legend
[Red Box] Outcrop 1.0 (Part 1)

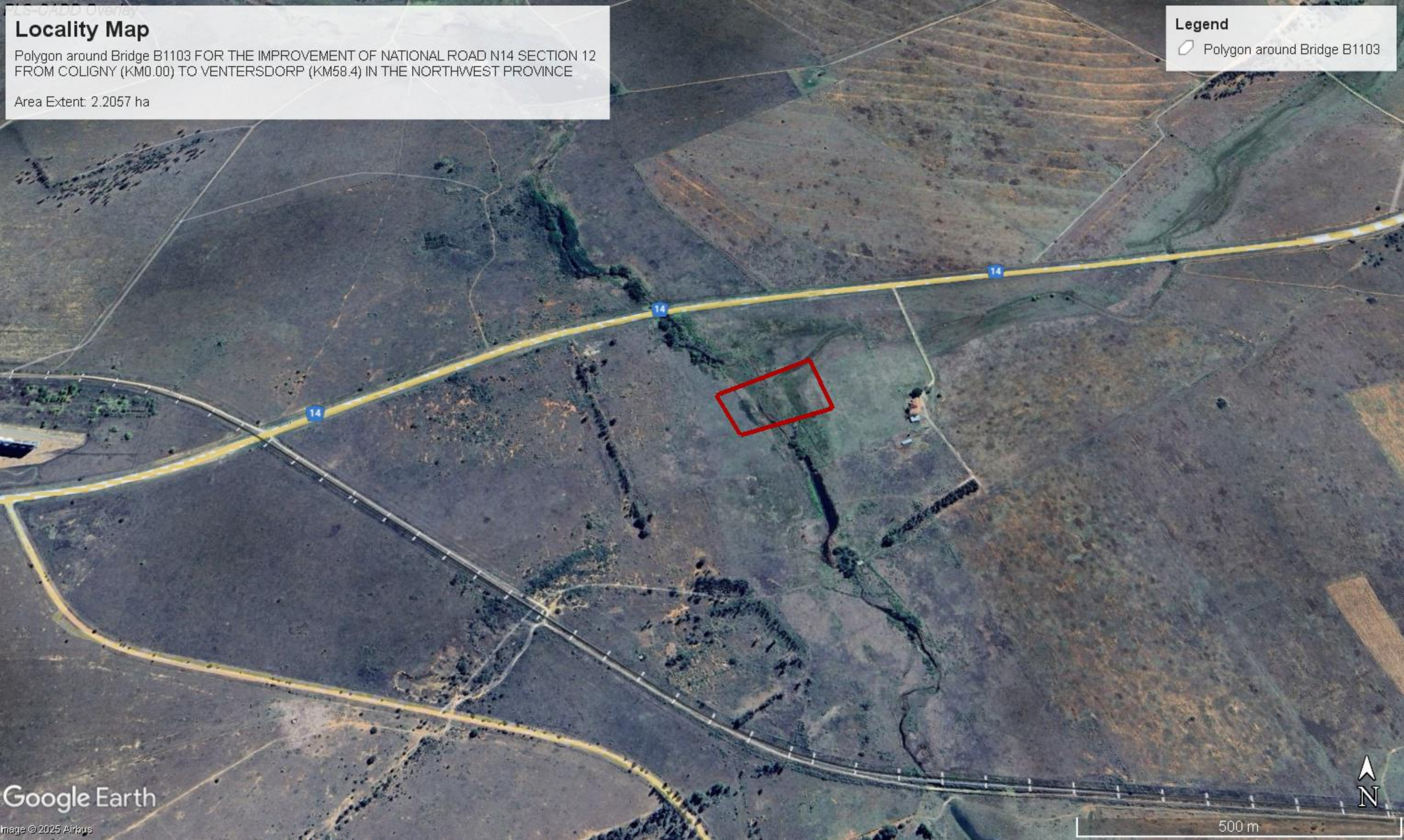
Locality Map

Polygon around Bridge B1103 FOR THE IMPROVEMENT OF NATIONAL ROAD N14 SECTION 12 FROM COLIGNY (KM0.00) TO VENTERSDORP (KM58.4) IN THE NORTHWEST PROVINCE

Area Extent: 2.2057 ha

Legend

-  Polygon around Bridge B1103



Locality Map
Quarry cut borrow pit/material source
required for the proposed improvements to
N14-Section 12 from Coligny (km0) to
Ventersdorp (km58.4), North West Province
Area extent 4.97ha



Legend


	Quarry cut
---	------------


Image © 2025 Airbus

Imagery Date: 4/14/2023 26°20'44.52" S 26°39'46.64" E elev 1504 m eye alt 2.86 km

Locality Map
Site boulder field borrow pit/material source required for the proposed improvements to N14-Section 12 from Coligny (km0) to Ventersdorp (km58.4), North West Province
Area extent 4.98ha



Legend

 Site Boulder Field