

**SCREENING REPORT FOR AN ENVIRONMENTAL AUTHORIZATION AS
REQUIRED BY THE 2014 EIA REGULATIONS – PROPOSED SITE
ENVIRONMENTAL SENSITIVITY**

EIA Reference number: N14 Sec 12

Project name: N14 Sec 12

Project title: N14 Sec 12

Date screening report generated: 07/06/2024 09:39:25

Applicant: SANRAL

Compiler: M Naicker

Compiler signature:

Naicker

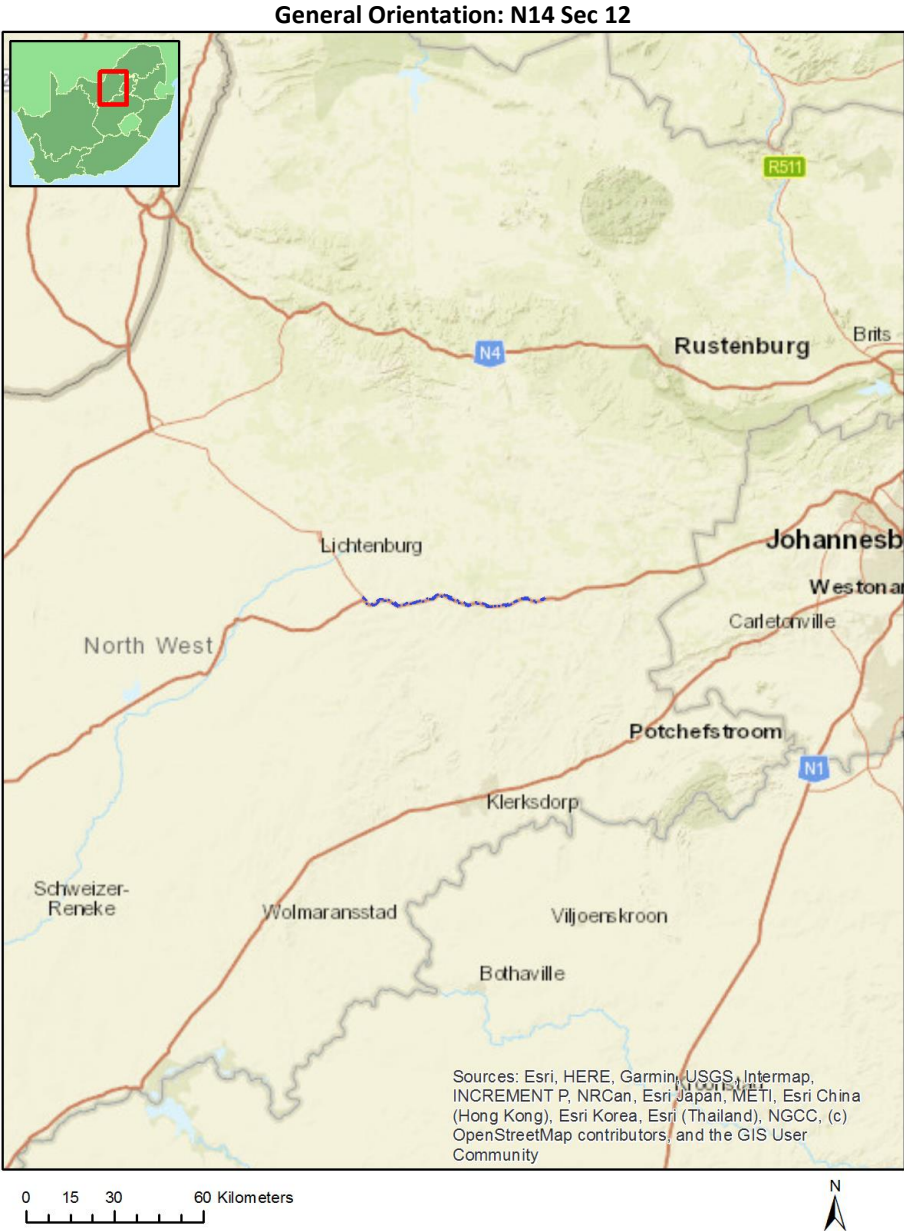
Application Category: Infrastructure | Transport Services | Roads | Public

Table of Contents

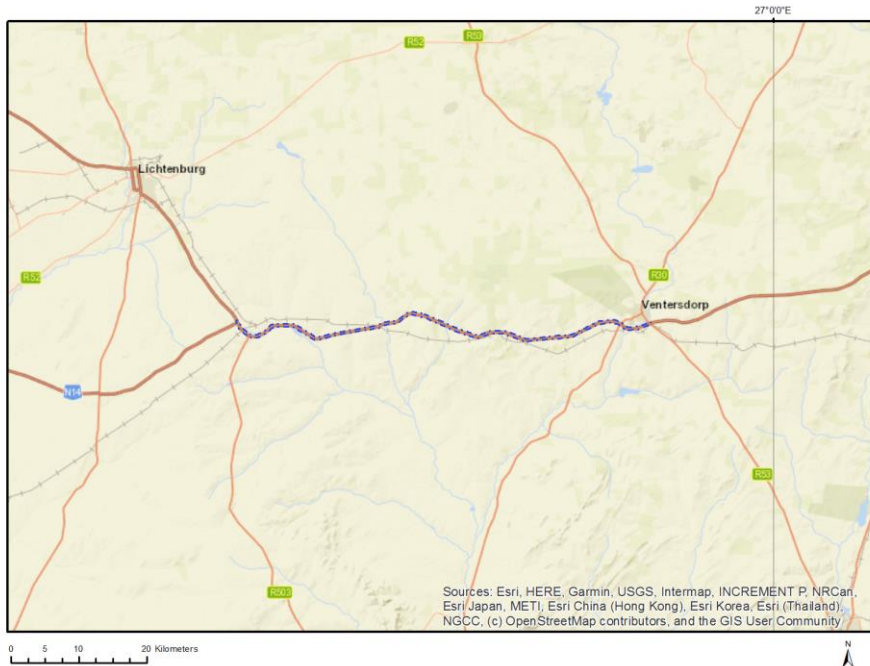
Proposed Project Location	3
Orientation map 1: General location	3
Map of proposed site and relevant area(s)	4
Cadastral details of the proposed site	4
Wind and Solar developments with an approved Environmental Authorisation or applications under consideration within 30 km of the proposed area	17
Environmental Management Frameworks relevant to the application	17
Environmental screening results and assessment outcomes	17
Relevant development incentives, restrictions, exclusions or prohibitions	17
Proposed Development Area Environmental Sensitivity	18
Specialist assessments identified	18
Results of the environmental sensitivity of the proposed area	20
MAP OF RELATIVE AGRICULTURE THEME SENSITIVITY	20
MAP OF RELATIVE ANIMAL SPECIES THEME SENSITIVITY	21
MAP OF RELATIVE AQUATIC BIODIVERSITY THEME SENSITIVITY	22
MAP OF RELATIVE ARCHAEOLOGICAL AND CULTURAL HERITAGE THEME SENSITIVITY	23
MAP OF RELATIVE CIVIL AVIATION THEME SENSITIVITY	24
MAP OF RELATIVE DEFENCE THEME SENSITIVITY	25
MAP OF RELATIVE PALEONTOLOGY THEME SENSITIVITY	26
MAP OF RELATIVE PLANT SPECIES THEME SENSITIVITY	27
MAP OF RELATIVE TERRESTRIAL BIODIVERSITY THEME SENSITIVITY	28

Proposed Project Location

Orientation map 1: General location



Map of proposed site and relevant area(s)



Cadastral details of the proposed site

Property details:

No	Farm Name	Farm/ Erf No	Portion	Latitude	Longitude	Property Type
1	VENTERSDORP	789	1	26°19'41.84S	26°50'20.84E	Erven
2	COLIGNY	211	0	26°20'14.92S	26°19'46.14E	Erven
3	COLIGNY	205	0	26°20'15.08S	26°19'42.61E	Erven
4	COLIGNY	208	0	26°20'16.62S	26°19'43.96E	Erven
5	COLIGNY	698	0	26°20'14.41S	26°19'48.11E	Erven
6	COLIGNY	207	0	26°20'14.96S	26°19'43.78E	Erven
7	COLIGNY	144	0	26°20'12.87S	26°19'37.1E	Erven
8	COLIGNY	148	0	26°20'12.62S	26°19'39.37E	Erven
9	COLIGNY	157	0	26°20'9.81S	26°19'45.31E	Erven
10	COLIGNY	150	0	26°20'12.44S	26°19'40.47E	Erven
11	COLIGNY	146	0	26°20'12.76S	26°19'38.24E	Erven
12	COLIGNY	206	0	26°20'16.88S	26°19'42.86E	Erven
13	COLIGNY	159	0	26°20'9.79S	26°19'46.22E	Erven
14	COLIGNY	158	0	26°20'11.94S	26°19'45.57E	Erven
15	COLIGNY	154	0	26°20'12.14S	26°19'43.44E	Erven
16	COLIGNY	153	0	26°20'10.01S	26°19'43.19E	Erven
17	COLIGNY	151	0	26°20'10.13S	26°19'41.97E	Erven
18	COLIGNY	156	0	26°20'12.1S	26°19'44.53E	Erven
19	COLIGNY	155	0	26°20'9.91S	26°19'44.33E	Erven
20	COLIGNY	245	0	26°20'28.11S	26°19'18.43E	Erven
21	COLIGNY	531	0	26°20'18.71S	26°19'26.52E	Erven
22	COLIGNY	215	0	26°20'24.39S	26°19'17.33E	Erven
23	COLIGNY	246	0	26°20'27.25S	26°19'19.34E	Erven
24	COLIGNY	214	0	26°20'22.39S	26°19'16.81E	Erven
25	COLIGNY	216	0	26°20'22.31S	26°19'18.16E	Erven
26	COLIGNY	247	0	26°20'26.21S	26°19'22.82E	Erven
27	COLIGNY	681	0	26°20'22.68S	26°19'23.94E	Erven

28	COLIGNY	217	0	26°20'24.27S	26°19'18.49E	Erven
29	COLIGNY	218	0	26°20'22.18S	26°19'19E	Erven
30	COLIGNY	219	0	26°20'24.14S	26°19'19.3E	Erven
31	COLIGNY	196	0	26°20'17.7S	26°19'36.62E	Erven
32	COLIGNY	200	0	26°20'17.51S	26°19'38.89E	Erven
33	COLIGNY	197	0	26°20'15.53S	26°19'37.48E	Erven
34	COLIGNY	201	0	26°20'15.36S	26°19'39.73E	Erven
35	COLIGNY	198	0	26°20'17.59S	26°19'37.73E	Erven
36	COLIGNY	195	0	26°20'15.65S	26°19'36.37E	Erven
37	COLIGNY	199	0	26°20'15.41S	26°19'38.61E	Erven
38	COLIGNY	203	0	26°20'15.23S	26°19'40.83E	Erven
39	COLIGNY	187	0	26°20'16.21S	26°19'31.21E	Erven
40	COLIGNY	191	0	26°20'15.99S	26°19'33.46E	Erven
41	COLIGNY	194	0	26°20'17.95S	26°19'34.91E	Erven
42	COLIGNY	190	0	26°20'18.14S	26°19'32.64E	Erven
43	COLIGNY	232	0	26°20'21.47S	26°19'27.53E	Erven
44	COLIGNY	231	0	26°20'23.46S	26°19'26.32E	Erven
45	COLIGNY	185	0	26°20'16.3S	26°19'30.03E	Erven
46	COLIGNY	193	0	26°20'15.88S	26°19'34.62E	Erven
47	COLIGNY	229	0	26°20'23.58S	26°19'25.18E	Erven
48	COLIGNY	240	0	26°20'21.14S	26°19'32.93E	Erven
49	TSHING	1333	0	26°19'33.07S	26°47'41.68E	Erven
50	TSHING	1618	0	26°19'34.77S	26°47'48.08E	Erven
51	COLIGNY	243	0	26°20'19.85S	26°19'37.57E	Erven
52	TSHING	2918	0	26°19'27.89S	26°47'19.18E	Erven
53	TSHING	1611	0	26°19'34.88S	26°47'49.2E	Erven
54	TSHING	1429	0	26°19'30.08S	26°47'34.75E	Erven
55	TSHING	1311	0	26°19'32.82S	26°47'38.81E	Erven
56	COLIGNY	230	0	26°20'21.59S	26°19'26.12E	Erven
57	COLIGNY	222	0	26°20'22.04S	26°19'21.57E	Erven
58	COLIGNY	223	0	26°20'23.99S	26°19'21.78E	Erven
59	TSHING	1628	0	26°19'35.03S	26°47'46.3E	Erven
60	TSHING	1622	0	26°19'35.56S	26°47'47.49E	Erven
61	TSHING	3172	0	26°19'28S	26°47'27.5E	Erven
62	TSHING	1619	0	26°19'35.45S	26°47'48.2E	Erven
63	COLIGNY	220	0	26°20'22.11S	26°19'20.43E	Erven
64	COLIGNY	221	0	26°20'24.1S	26°19'20.61E	Erven
65	COLIGNY	236	0	26°20'20.87S	26°19'30.62E	Erven
66	COLIGNY	235	0	26°20'22.73S	26°19'29.75E	Erven
67	TSHING	1331	0	26°19'33.28S	26°47'40.07E	Erven
68	TSHING	3230	0	26°19'34.36S	26°47'34.17E	Erven
69	TSHING	3237	0	26°19'35.13S	26°47'38.29E	Erven
70	TSHING	2950	0	26°19'25.86S	26°47'8.29E	Erven
71	TSHING	2961	0	26°19'27.08S	26°47'9.14E	Erven
72	COLIGNY	184	0	26°20'18.49S	26°19'29.2E	Erven
73	COLIGNY	189	0	26°20'16.12S	26°19'32.32E	Erven
74	COLIGNY	242	0	26°20'20.5S	26°19'35.19E	Erven
75	TSHING	1356	0	26°19'32.74S	26°47'43.6E	Erven
76	COLIGNY	186	0	26°20'18.37S	26°19'30.38E	Erven
77	COLIGNY	188	0	26°20'18.24S	26°19'31.48E	Erven
78	COLIGNY	234	0	26°20'20.97S	26°19'29.5E	Erven
79	COLIGNY	238	0	26°20'20.74S	26°19'31.79E	Erven
80	TSHING	1630	0	26°19'35.13S	26°47'45.59E	Erven
81	TSHING	1629	0	26°19'35.64S	26°47'46.12E	Erven
82	TSHING	1612	0	26°19'34.77S	26°47'49.9E	Erven
83	TSHING	1606	0	26°19'35.08S	26°47'51.06E	Erven
84	TSHING	1329	0	26°19'31.86S	26°47'39.81E	Erven
85	TSHING	1330	0	26°19'32.59S	26°47'39.94E	Erven
86	COLIGNY	225	0	26°20'23.87S	26°19'22.88E	Erven
87	COLIGNY	228	0	26°20'21.68S	26°19'24.94E	Erven

88	COLIGNY	239	0	26°20'22.2S	26°19'31.98E	Erven
89	COLIGNY	241	0	26°20'20.86S	26°19'34.09E	Erven
90	TSHING	1634	0	26°19'33.83S	26°47'44.01E	Erven
91	TSHING	1334	0	26°19'32.93S	26°47'42.49E	Erven
92	TSHING	1456	0	26°19'31.51S	26°47'41.94E	Erven
93	TSHING	1355	0	26°19'32.04S	26°47'43.47E	Erven
94	TSHING	2919	0	26°19'27.94S	26°47'18.65E	Erven
95	TSHING	2920	0	26°19'27.92S	26°47'18.06E	Erven
96	TSHING	1445	0	26°19'32.02S	26°47'38.37E	Erven
97	TSHING	1443	0	26°19'30.81S	26°47'38.53E	Erven
98	TSHING	1444	0	26°19'31.46S	26°47'38.64E	Erven
99	TSHING	1336	0	26°19'32.42S	26°47'41.57E	Erven
100	TSHING	1335	0	26°19'32.31S	26°47'42.38E	Erven
101	TSHING	3208	0	26°19'30.43S	26°47'17.3E	Erven
102	TSHING	3215	0	26°19'32.18S	26°47'24.82E	Erven
103	TSHING	2975	0	26°19'27.6S	26°47'10.66E	Erven
104	TSHING	3220	0	26°19'30.94S	26°47'28.92E	Erven
105	TSHING	1614	0	26°19'35.66S	26°47'49.35E	Erven
106	TSHING	1613	0	26°19'35.63S	26°47'50.06E	Erven
107	TSHING	1328	0	26°19'31.19S	26°47'39.69E	Erven
108	TSHING	3249	0	26°19'35.24S	26°47'44.39E	Erven
109	TSHING	3207	0	26°19'30.12S	26°47'13.8E	Erven
110	TSHING	3214	0	26°19'32.04S	26°47'23.98E	Erven
111	TSHING	3216	0	26°19'32.33S	26°47'25.66E	Erven
112	TSHING	2972	0	26°19'27.48S	26°47'7.92E	Erven
113	TSHING	2974	0	26°19'27.09S	26°47'10.68E	Erven
114	TSHING	3223	0	26°19'33.33S	26°47'30.26E	Erven
115	TSHING	3225	0	26°19'33.68S	26°47'31.43E	Erven
116	TSHING	3227	0	26°19'33.95S	26°47'32.5E	Erven
117	TSHING	3240	0	26°19'35.02S	26°47'39.95E	Erven
118	TSHING	2917	0	26°19'27.08S	26°47'19.05E	Erven
119	TSHING	1603	0	26°19'35.66S	26°47'51.89E	Erven
120	TSHING	1312	0	26°19'32.93S	26°47'38.01E	Erven
121	TSHING	1310	0	26°19'33.45S	26°47'38.93E	Erven
122	TSHING	1327	0	26°19'30.51S	26°47'39.57E	Erven
123	TSHING	1339	0	26°19'31.09S	26°47'40.4E	Erven
124	TSHING	1332	0	26°19'33.18S	26°47'40.85E	Erven
125	TSHING	3232	0	26°19'34.64S	26°47'35.28E	Erven
126	TSHING	3235	0	26°19'35.1S	26°47'37.03E	Erven
127	TSHING	2948	0	26°19'25.97S	26°47'9.52E	Erven
128	TSHING	2962	0	26°19'27.62S	26°47'9.07E	Erven
129	TSHING	2963	0	26°19'28.16S	26°47'9E	Erven
130	TSHING	2921	0	26°19'27.85S	26°47'17.48E	Erven
131	TSHING	2922	0	26°19'27.03S	26°47'17.94E	Erven
132	TSHING	1309	0	26°19'33.57S	26°47'38.12E	Erven
133	TSHING	2923	0	26°19'26.46S	26°47'18.5E	Erven
134	TSHING	3217	0	26°19'32.47S	26°47'26.51E	Erven
135	TSHING	3219	0	26°19'32.01S	26°47'28.77E	Erven
136	TSHING	3221	0	26°19'30.1S	26°47'28.75E	Erven
137	TSHING	3224	0	26°19'33.5S	26°47'30.84E	Erven
138	TSHING	3226	0	26°19'33.8S	26°47'31.96E	Erven
139	TSHING	3241	0	26°19'34.66S	26°47'40.45E	Erven
140	TSHING	3245	0	26°19'35.61S	26°47'41.97E	Erven
141	TSHING	3247	0	26°19'35.59S	26°47'43.16E	Erven
142	TSHING	3246	0	26°19'35.6S	26°47'42.6E	Erven
143	TSHING	3248	0	26°19'35.58S	26°47'43.72E	Erven
144	TSHING	2969	0	26°19'28.96S	26°47'7.5E	Erven
145	TSHING	2971	0	26°19'27.98S	26°47'7.77E	Erven
146	TSHING	3229	0	26°19'34.23S	26°47'33.62E	Erven
147	TSHING	3231	0	26°19'34.5S	26°47'34.73E	Erven

148	TSHING	3236	0	26°19'35.12S	26°47'37.66E	Erven
149	TSHING	3238	0	26°19'35.11S	26°47'38.83E	Erven
150	TSHING	2949	0	26°19'25.92S	26°47'8.92E	Erven
151	TSHING	3242	0	26°19'34.58S	26°47'41.07E	Erven
152	TSHING	3244	0	26°19'35.65S	26°47'41.39E	Erven
153	TSHING	3209	0	26°19'29.64S	26°47'20.19E	Erven
154	TSHING	3210	0	26°19'30.26S	26°47'24.43E	Erven
155	TSHING	2976	0	26°19'28.14S	26°47'10.62E	Erven
156	TSHING	2977	0	26°19'28.64S	26°47'10.58E	Erven
157	TSHING	3222	0	26°19'29.3S	26°47'28.54E	Erven
158	TSHING	1338	0	26°19'31.77S	26°47'40.52E	Erven
159	TSHING	1337	0	26°19'32.49S	26°47'40.71E	Erven
160	TSHING	3233	0	26°19'34.77S	26°47'35.87E	Erven
161	TSHING	3234	0	26°19'34.93S	26°47'36.43E	Erven
162	TSHING	2946	0	26°19'26.01S	26°47'10.86E	Erven
163	TSHING	2947	0	26°19'26S	26°47'10.15E	Erven
164	TSHING	2964	0	26°19'28.69S	26°47'8.97E	Erven
165	TSHING	3211	0	26°19'31.34S	26°47'20.67E	Erven
166	TSHING	3212	0	26°19'31.71S	26°47'22.31E	Erven
167	TSHING	2968	0	26°19'29.46S	26°47'7.29E	Erven
168	TSHING	2970	0	26°19'28.49S	26°47'7.63E	Erven
169	TSHING	2965	0	26°19'29.19S	26°47'8.92E	Erven
170	TSHING	2967	0	26°19'30.01S	26°47'6.99E	Erven
171	TSHING	2978	0	26°19'29.17S	26°47'10.55E	Erven
172	TSHING	2979	0	26°19'29.72S	26°47'10.57E	Erven
173	TSHING	2804	0	26°19'25.83S	26°47'14.29E	Erven
174	TSHING	1417	0	26°19'29.71S	26°47'32.13E	Erven
175	TSHING	1621	0	26°19'36.1S	26°47'47.61E	Erven
176	TSHING	1605	0	26°19'35.76S	26°47'51.17E	Erven
177	TSHING	1287	0	26°19'31.04S	26°47'31.27E	Erven
178	TSHING	1289	0	26°19'32.29S	26°47'31.48E	Erven
179	TSHING	2849	0	26°19'26.86S	26°47'15.22E	Erven
180	TSHING	1357	0	26°19'29.56S	26°47'46.02E	Erven
181	TSHING	2851	0	26°19'25.93S	26°47'16.13E	Erven
182	TSHING	1437	0	26°19'30.91S	26°47'34.17E	Erven
183	TSHING	3138	0	26°19'28.2S	26°47'26.32E	Erven
184	TSHING	3140	0	26°19'27.77S	26°47'25.36E	Erven
185	TSHING	2806	0	26°19'26.71S	26°47'13.55E	Erven
186	TSHING	2808	0	26°19'27.49S	26°47'13.35E	Erven
187	TSHING	2805	0	26°19'26.13S	26°47'13.74E	Erven
188	TSHING	2812	0	26°19'26.17S	26°47'12.64E	Erven
189	TSHING	1303	0	26°19'29.66S	26°47'35.77E	Erven
190	TSHING	1285	0	26°19'29.65S	26°47'31.02E	Erven
191	TSHING	1288	0	26°19'31.73S	26°47'31.38E	Erven
192	TSHING	2886	0	26°19'28.14S	26°47'20.73E	Erven
193	TSHING	2888	0	26°19'27.44S	26°47'20.61E	Erven
194	TSHING	1425	0	26°19'31.16S	26°47'32.39E	Erven
195	TSHING	1423	0	26°19'32.53S	26°47'32.52E	Erven
196	TSHING	1420	0	26°19'31.06S	26°47'33.09E	Erven
197	TSHING	2807	0	26°19'27.51S	26°47'13.86E	Erven
198	TSHING	2809	0	26°19'27.43S	26°47'12.79E	Erven
199	TSHING	1428	0	26°19'29.36S	26°47'34.61E	Erven
200	TSHING	1418	0	26°19'29.62S	26°47'32.83E	Erven
201	TSHING	1294	0	26°19'29.03S	26°47'30.19E	Erven
202	TSHING	2848	0	26°19'27.63S	26°47'14.79E	Erven
203	TSHING	1434	0	26°19'33.07S	26°47'34.21E	Erven
204	TSHING	1432	0	26°19'32.3S	26°47'35.13E	Erven
205	TSHING	1315	0	26°19'30.92S	26°47'36.72E	Erven
206	TSHING	3139	0	26°19'28.31S	26°47'25.43E	Erven
207	TSHING	2811	0	26°19'26.71S	26°47'12.6E	Erven

208	TSHING	1422	0	26°19'32.6S	26°47'33.23E	Erven
209	TSHING	2842	0	26°19'26.08S	26°47'17.14E	Erven
210	TSHING	1424	0	26°19'31.89S	26°47'32.52E	Erven
211	TSHING	1419	0	26°19'30.33S	26°47'32.97E	Erven
212	TSHING	2844	0	26°19'26.93S	26°47'16.35E	Erven
213	TSHING	2846	0	26°19'27.67S	26°47'15.96E	Erven
214	TSHING	1435	0	26°19'32.44S	26°47'34.38E	Erven
215	TSHING	1431	0	26°19'31.53S	26°47'35E	Erven
216	TSHING	1446	0	26°19'31.56S	26°47'37.93E	Erven
217	TSHING	3137	0	26°19'27.62S	26°47'26.26E	Erven
218	TSHING	2843	0	26°19'26.49S	26°47'16.75E	Erven
219	TSHING	2845	0	26°19'27.72S	26°47'16.55E	Erven
220	TSHING	2847	0	26°19'27.65S	26°47'15.41E	Erven
221	TSHING	1436	0	26°19'31.63S	26°47'34.29E	Erven
222	TSHING	1430	0	26°19'30.81S	26°47'34.87E	Erven
223	TSHING	1438	0	26°19'30.18S	26°47'34.04E	Erven
224	TSHING	1447	0	26°19'30.91S	26°47'37.81E	Erven
225	TSHING	1626	0	26°19'33.66S	26°47'46.05E	Erven
226	TSHING	1615	0	26°19'33.5S	26°47'47.14E	Erven
227	TSHING	1631	0	26°19'34.45S	26°47'45.47E	Erven
228	TSHING	1617	0	26°19'34.1S	26°47'47.96E	Erven
229	TSHING	1635	0	26°19'34.31S	26°47'44.09E	Erven
230	TSHING	2889	0	26°19'26.93S	26°47'20.77E	Erven
231	TSHING	1292	0	26°19'30.45S	26°47'30.43E	Erven
232	TSHING	1286	0	26°19'30.34S	26°47'31.14E	Erven
233	TSHING	1307	0	26°19'32.41S	26°47'36.23E	Erven
234	TSHING	1316	0	26°19'30.24S	26°47'36.6E	Erven
235	TSHING	1604	0	26°19'36.29S	26°47'51.71E	Erven
236	TSHING	3127	0	26°19'27.41S	26°47'23.67E	Erven
237	TSHING	1627	0	26°19'34.35S	26°47'46.18E	Erven
238	TSHING	1632	0	26°19'34.36S	26°47'42.03E	Erven
239	TSHING	1636	0	26°19'34.48S	26°47'42.93E	Erven
240	TSHING	2883	0	26°19'27.46S	26°47'21.92E	Erven
241	TSHING	2884	0	26°19'28.2S	26°47'22.22E	Erven
242	TSHING	1427	0	26°19'29.46S	26°47'33.91E	Erven
243	TSHING	1295	0	26°19'28.9S	26°47'30.95E	Erven
244	TSHING	1296	0	26°19'28.73S	26°47'31.73E	Erven
245	TSHING	1291	0	26°19'31.14S	26°47'30.55E	Erven
246	TSHING	1290	0	26°19'31.93S	26°47'30.72E	Erven
247	TSHING	1433	0	26°19'33.06S	26°47'34.94E	Erven
248	TSHING	1304	0	26°19'30.34S	26°47'35.89E	Erven
249	TSHING	1314	0	26°19'31.6S	26°47'36.84E	Erven
250	TSHING	1448	0	26°19'30.26S	26°47'37.7E	Erven
251	TSHING	3129	0	26°19'28.25S	26°47'24.25E	Erven
252	TSHING	1633	0	26°19'34S	26°47'42.85E	Erven
253	TSHING	2890	0	26°19'26.57S	26°47'21.22E	Erven
254	TSHING	1305	0	26°19'31.02S	26°47'36.01E	Erven
255	TSHING	1306	0	26°19'31.7S	26°47'36.13E	Erven
256	TSHING	3128	0	26°19'27.4S	26°47'24.17E	Erven
257	TLHABOLOGANG	3066	0	26°19'28.57S	26°17'29.23E	Erven
258	TLHABOLOGANG	3078	0	26°19'33.95S	26°17'32E	Erven
259	TLHABOLOGANG	3080	0	26°19'33.85S	26°17'31.06E	Erven
260	TLHABOLOGANG	3101	0	26°19'30.04S	26°17'26.98E	Erven
261	TLHABOLOGANG	3052	0	26°19'34.65S	26°17'32.81E	Erven
262	TLHABOLOGANG	3081	0	26°19'33.38S	26°17'30.8E	Erven
263	TLHABOLOGANG	3083	0	26°19'32.52S	26°17'30.38E	Erven
264	TLHABOLOGANG	3002	0	26°19'35.61S	26°17'30.64E	Erven
265	TLHABOLOGANG	3003	0	26°19'35.13S	26°17'30.39E	Erven
266	TSHING	2882	0	26°19'26.85S	26°47'22.25E	Erven
267	TSHING	2885	0	26°19'28.18S	26°47'21.44E	Erven

268	TLHABOLOGANG	2549	0	26°19'48.01S	26°17'42.89E	Erven
269	TLHABOLOGANG	2551	0	26°19'47.51S	26°17'41.95E	Erven
270	TLHABOLOGANG	2583	0	26°19'41.04S	26°17'37.42E	Erven
271	TLHABOLOGANG	2585	0	26°19'41.11S	26°17'36.2E	Erven
272	TLHABOLOGANG	3043	0	26°19'30.13S	26°17'31.29E	Erven
273	TLHABOLOGANG	3044	0	26°19'30.7S	26°17'31.6E	Erven
274	TLHABOLOGANG	3067	0	26°19'29S	26°17'29.37E	Erven
275	TLHABOLOGANG	3068	0	26°19'29.5S	26°17'29.62E	Erven
276	TLHABOLOGANG	3072	0	26°19'31.29S	26°17'30.58E	Erven
277	TLHABOLOGANG	3075	0	26°19'32.61S	26°17'31.28E	Erven
278	TLHABOLOGANG	3076	0	26°19'33.08S	26°17'31.54E	Erven
279	TLHABOLOGANG	3089	0	26°19'29.82S	26°17'28.91E	Erven
280	TLHABOLOGANG	3090	0	26°19'29.34S	26°17'28.71E	Erven
281	TLHABOLOGANG	3009	0	26°19'32.23S	26°17'28.86E	Erven
282	TLHABOLOGANG	3010	0	26°19'31.8S	26°17'28.66E	Erven
283	TLHABOLOGANG	3051	0	26°19'34.36S	26°17'33.41E	Erven
284	TLHABOLOGANG	3082	0	26°19'32.9S	26°17'30.55E	Erven
285	TLHABOLOGANG	3084	0	26°19'32S	26°17'30.16E	Erven
286	TLHABOLOGANG	3004	0	26°19'34.59S	26°17'30.17E	Erven
287	TLHABOLOGANG	3016	0	26°19'28.75S	26°17'27.1E	Erven
288	TLHABOLOGANG	2552	0	26°19'47.26S	26°17'41.45E	Erven
289	TLHABOLOGANG	2554	0	26°19'40.71S	26°17'38.05E	Erven
290	TLHABOLOGANG	2578	0	26°19'42.84S	26°17'38.42E	Erven
291	TLHABOLOGANG	2580	0	26°19'42.12S	26°17'38E	Erven
292	TLHABOLOGANG	3041	0	26°19'29.14S	26°17'30.78E	Erven
293	TLHABOLOGANG	3046	0	26°19'31.82S	26°17'32.11E	Erven
294	TLHABOLOGANG	3048	0	26°19'32.84S	26°17'32.68E	Erven
295	TLHABOLOGANG	3050	0	26°19'33.86S	26°17'33.23E	Erven
296	TLHABOLOGANG	3053	0	26°19'34.93S	26°17'32.2E	Erven
297	TLHABOLOGANG	2590	0	26°19'43.14S	26°17'37.36E	Erven
298	TLHABOLOGANG	2592	0	26°19'42.53S	26°17'36.29E	Erven
299	TLHABOLOGANG	2594	0	26°19'41.76S	26°17'35.83E	Erven
300	TLHABOLOGANG	2599	0	26°19'42.93S	26°17'35.26E	Erven
301	TLHABOLOGANG	2601	0	26°19'43.52S	26°17'35.96E	Erven
302	TLHABOLOGANG	2608	0	26°19'44.99S	26°17'38.47E	Erven
303	TLHABOLOGANG	2610	0	26°19'45.49S	26°17'38.34E	Erven
304	TLHABOLOGANG	2612	0	26°19'45.08S	26°17'37.54E	Erven
305	TLHABOLOGANG	2617	0	26°19'44.03S	26°17'35.59E	Erven
306	TLHABOLOGANG	2619	0	26°19'43.64S	26°17'34.82E	Erven
307	TLHABOLOGANG	2560	0	26°19'42.88S	26°17'39.25E	Erven
308	TLHABOLOGANG	2561	0	26°19'43.28S	26°17'39.46E	Erven
309	TLHABOLOGANG	2571	0	26°19'45.5S	26°17'39.95E	Erven
310	TLHABOLOGANG	2572	0	26°19'45.01S	26°17'39.66E	Erven
311	TLHABOLOGANG	2586	0	26°19'41.48S	26°17'36.42E	Erven
312	TLHABOLOGANG	2553	0	26°19'40.36S	26°17'37.81E	Erven
313	TLHABOLOGANG	2555	0	26°19'41.09S	26°17'38.26E	Erven
314	TLHABOLOGANG	3085	0	26°19'31.6S	26°17'29.9E	Erven
315	TLHABOLOGANG	3087	0	26°19'30.68S	26°17'29.43E	Erven
316	TLHABOLOGANG	3005	0	26°19'34.17S	26°17'29.87E	Erven
317	TLHABOLOGANG	3007	0	26°19'33.24S	26°17'29.41E	Erven
318	TLHABOLOGANG	3014	0	26°19'29.78S	26°17'27.62E	Erven
319	TLHABOLOGANG	2589	0	26°19'42.67S	26°17'37.18E	Erven
320	TLHABOLOGANG	2604	0	26°19'44.2S	26°17'37.15E	Erven
321	TLHABOLOGANG	2606	0	26°19'44.18S	26°17'37.9E	Erven
322	TLHABOLOGANG	2622	0	26°19'42.49S	26°17'34.24E	Erven
323	TLHABOLOGANG	2624	0	26°19'39.52S	26°17'37.37E	Erven
324	TLHABOLOGANG	3042	0	26°19'29.6S	26°17'31.03E	Erven
325	TLHABOLOGANG	3045	0	26°19'31.14S	26°17'31.87E	Erven
326	TLHABOLOGANG	3071	0	26°19'30.85S	26°17'30.31E	Erven
327	TLHABOLOGANG	3069	0	26°19'29.91S	26°17'29.86E	Erven

328	TLHABOLOGANG	3070	0	26°19'30.38S	26°17'30.08E	Erven
329	TLHABOLOGANG	3073	0	26°19'31.74S	26°17'30.79E	Erven
330	TLHABOLOGANG	3074	0	26°19'32.17S	26°17'31.06E	Erven
331	TLHABOLOGANG	3091	0	26°19'28.92S	26°17'28.47E	Erven
332	TLHABOLOGANG	2632	0	26°19'36.2S	26°17'34.7E	Erven
333	TLHABOLOGANG	2634	0	26°19'37.39S	26°17'35.39E	Erven
334	TLHABOLOGANG	2636	0	26°19'38.57S	26°17'35.96E	Erven
335	TLHABOLOGANG	2641	0	26°19'36.29S	26°17'33.64E	Erven
336	TLHABOLOGANG	2643	0	26°19'37.95S	26°17'34.55E	Erven
337	TLHABOLOGANG	2648	0	26°19'37.78S	26°17'32.7E	Erven
338	TLHABOLOGANG	3049	0	26°19'33.36S	26°17'32.94E	Erven
339	TLHABOLOGANG	3054	0	26°19'35.17S	26°17'31.58E	Erven
340	TLHABOLOGANG	3077	0	26°19'33.52S	26°17'31.76E	Erven
341	TLHABOLOGANG	3088	0	26°19'30.22S	26°17'29.18E	Erven
342	TLHABOLOGANG	2596	0	26°19'41.82S	26°17'34.62E	Erven
343	TLHABOLOGANG	2597	0	26°19'42.2S	26°17'34.85E	Erven
344	TLHABOLOGANG	2613	0	26°19'44.88S	26°17'37.17E	Erven
345	TLHABOLOGANG	2616	0	26°19'44.25S	26°17'36.01E	Erven
346	TLHABOLOGANG	3008	0	26°19'32.72S	26°17'29.11E	Erven
347	TLHABOLOGANG	3015	0	26°19'29.28S	26°17'27.37E	Erven
348	TLHABOLOGANG	2548	0	26°19'48.3S	26°17'43.43E	Erven
349	TLHABOLOGANG	2559	0	26°19'42.52S	26°17'39.08E	Erven
350	TLHABOLOGANG	2566	0	26°19'45.1S	26°17'40.52E	Erven
351	TLHABOLOGANG	2573	0	26°19'44.65S	26°17'39.45E	Erven
352	TLHABOLOGANG	2584	0	26°19'40.65S	26°17'37.21E	Erven
353	TLHABOLOGANG	2591	0	26°19'42.9S	26°17'36.72E	Erven
354	TLHABOLOGANG	2602	0	26°19'43.72S	26°17'36.34E	Erven
355	TLHABOLOGANG	2123	0	26°19'37.76S	26°17'37.6E	Erven
356	TLHABOLOGANG	2130	0	26°19'33.35S	26°17'35.63E	Erven
357	TLHABOLOGANG	2577	0	26°19'43.21S	26°17'38.67E	Erven
358	TLHABOLOGANG	2579	0	26°19'42.46S	26°17'38.23E	Erven
359	TLHABOLOGANG	2581	0	26°19'41.75S	26°17'37.78E	Erven
360	TLHABOLOGANG	2588	0	26°19'42.23S	26°17'36.89E	Erven
361	TLHABOLOGANG	2603	0	26°19'43.91S	26°17'36.72E	Erven
362	TLHABOLOGANG	2605	0	26°19'43.85S	26°17'37.68E	Erven
363	TLHABOLOGANG	3011	0	26°19'31.23S	26°17'28.36E	Erven
364	TLHABOLOGANG	3012	0	26°19'30.79S	26°17'28.14E	Erven
365	TLHABOLOGANG	2556	0	26°19'41.48S	26°17'38.44E	Erven
366	TLHABOLOGANG	2558	0	26°19'42.16S	26°17'38.87E	Erven
367	TLHABOLOGANG	2565	0	26°19'44.72S	26°17'40.26E	Erven
368	TLHABOLOGANG	2567	0	26°19'45.51S	26°17'40.78E	Erven
369	TLHABOLOGANG	2574	0	26°19'44.28S	26°17'39.23E	Erven
370	TLHABOLOGANG	2576	0	26°19'43.56S	26°17'38.85E	Erven
371	TLHABOLOGANG	2629	0	26°19'36.53S	26°17'35.68E	Erven
372	TLHABOLOGANG	2631	0	26°19'35.71S	26°17'34.43E	Erven
373	TLHABOLOGANG	2646	0	26°19'36.6S	26°17'33.15E	Erven
374	TLHABOLOGANG	2649	0	26°19'38.65S	26°17'33.2E	Erven
375	TLHABOLOGANG	2651	0	26°19'38.1S	26°17'32.21E	Erven
376	TLHABOLOGANG	2666	0	26°19'30.5S	26°17'32.26E	Erven
377	TLHABOLOGANG	2638	0	26°19'39.33S	26°17'34.61E	Erven
378	TLHABOLOGANG	2639	0	26°19'39.62S	26°17'33.94E	Erven
379	TLHABOLOGANG	2659	0	26°19'34.21S	26°17'34.31E	Erven
380	TLHABOLOGANG	2660	0	26°19'33.57S	26°17'34.43E	Erven
381	TLHABOLOGANG	2562	0	26°19'43.65S	26°17'39.66E	Erven
382	TLHABOLOGANG	2563	0	26°19'44S	26°17'39.85E	Erven
383	TLHABOLOGANG	2569	0	26°19'46.43S	26°17'39.73E	Erven
384	TLHABOLOGANG	2570	0	26°19'46.09S	26°17'40.01E	Erven
385	TLHABOLOGANG	2587	0	26°19'41.85S	26°17'36.64E	Erven
386	TLHABOLOGANG	2525	0	26°19'44.05S	26°17'41.25E	Erven
387	TLHABOLOGANG	2611	0	26°19'45.26S	26°17'37.95E	Erven

388	TLHABOLOGANG	2618	0	26°19'43.85S	26°17'35.21E	Erven
389	TLHABOLOGANG	2625	0	26°19'38.89S	26°17'37.04E	Erven
390	TLHABOLOGANG	2633	0	26°19'36.81S	26°17'35.07E	Erven
391	TLHABOLOGANG	2644	0	26°19'38.25S	26°17'34.05E	Erven
392	TLHABOLOGANG	2621	0	26°19'42.86S	26°17'34.45E	Erven
393	TLHABOLOGANG	2623	0	26°19'42.12S	26°17'34.02E	Erven
394	TLHABOLOGANG	2628	0	26°19'37.11S	26°17'36.03E	Erven
395	TLHABOLOGANG	2630	0	26°19'35.72S	26°17'35.24E	Erven
396	TLHABOLOGANG	2645	0	26°19'37.45S	26°17'33.58E	Erven
397	TLHABOLOGANG	2647	0	26°19'36.96S	26°17'32.24E	Erven
398	TLHABOLOGANG	2650	0	26°19'38.94S	26°17'32.61E	Erven
399	TLHABOLOGANG	2652	0	26°19'37.24S	26°17'31.78E	Erven
400	TLHABOLOGANG	2665	0	26°19'31.09S	26°17'32.57E	Erven
401	TLHABOLOGANG	2667	0	26°19'29.9S	26°17'31.96E	Erven
402	TLHABOLOGANG	2626	0	26°19'38.27S	26°17'36.69E	Erven
403	TLHABOLOGANG	2595	0	26°19'41.37S	26°17'35.64E	Erven
404	TLHABOLOGANG	2598	0	26°19'42.58S	26°17'35.07E	Erven
405	TLHABOLOGANG	2614	0	26°19'44.67S	26°17'36.78E	Erven
406	TLHABOLOGANG	2615	0	26°19'44.45S	26°17'36.38E	Erven
407	TLHABOLOGANG	2637	0	26°19'38.96S	26°17'35.28E	Erven
408	TLHABOLOGANG	2224	0	26°19'40S	26°17'38.92E	Erven
409	TLHABOLOGANG	2226	0	26°19'39.26S	26°17'38.55E	Erven
410	TLHABOLOGANG	2542	0	26°19'47.55S	26°17'43.21E	Erven
411	TLHABOLOGANG	2654	0	26°19'35.96S	26°17'31.64E	Erven
412	TLHABOLOGANG	2661	0	26°19'33.51S	26°17'33.75E	Erven
413	TLHABOLOGANG	2653	0	26°19'36.3S	26°17'30.95E	Erven
414	TLHABOLOGANG	2655	0	26°19'35.59S	26°17'32.32E	Erven
415	TLHABOLOGANG	2662	0	26°19'32.89S	26°17'33.51E	Erven
416	TLHABOLOGANG	2664	0	26°19'31.71S	26°17'32.88E	Erven
417	TLHABOLOGANG	2668	0	26°19'29.3S	26°17'31.66E	Erven
418	TLHABOLOGANG	2125	0	26°19'36.25S	26°17'36.91E	Erven
419	TLHABOLOGANG	2126	0	26°19'35.71S	26°17'36.6E	Erven
420	TLHABOLOGANG	2129	0	26°19'33.97S	26°17'35.57E	Erven
421	TLHABOLOGANG	2135	0	26°19'33.26S	26°17'39.73E	Erven
422	TLHABOLOGANG	2640	0	26°19'40.22S	26°17'34.93E	Erven
423	TLHABOLOGANG	2657	0	26°19'34.95S	26°17'33.65E	Erven
424	TLHABOLOGANG	2658	0	26°19'34.67S	26°17'34.38E	Erven
425	TLHABOLOGANG	2124	0	26°19'36.84S	26°17'37.18E	Erven
426	TLHABOLOGANG	2768	0	26°19'32.19S	26°17'34.91E	Erven
427	TLHABOLOGANG	2770	0	26°19'31.77S	26°17'34.12E	Erven
428	TLHABOLOGANG	2771	0	26°19'31.2S	26°17'33.8E	Erven
429	TLHABOLOGANG	2218	0	26°19'42.2S	26°17'40.17E	Erven
430	TLHABOLOGANG	2220	0	26°19'41.44S	26°17'39.75E	Erven
431	TLHABOLOGANG	2523	0	26°19'43.34S	26°17'40.86E	Erven
432	TLHABOLOGANG	2219	0	26°19'41.81S	26°17'39.96E	Erven
433	TLHABOLOGANG	2524	0	26°19'43.7S	26°17'41.07E	Erven
434	TLHABOLOGANG	2227	0	26°19'38.87S	26°17'38.35E	Erven
435	TLHABOLOGANG	2530	0	26°19'45.94S	26°17'42.44E	Erven
436	TLHABOLOGANG	2547	0	26°19'48.55S	26°17'43.86E	Erven
437	TLHABOLOGANG	2127	0	26°19'35.14S	26°17'36.23E	Erven
438	TLHABOLOGANG	2128	0	26°19'34.56S	26°17'35.91E	Erven
439	TLHABOLOGANG	2773	0	26°19'30.01S	26°17'33.17E	Erven
440	TLHABOLOGANG	2228	0	26°19'38.51S	26°17'38.18E	Erven
441	TLHABOLOGANG	2541	0	26°19'47.28S	26°17'42.74E	Erven
442	TLHABOLOGANG	2217	0	26°19'42.42S	26°17'40.75E	Erven
443	TLHABOLOGANG	2769	0	26°19'32.53S	26°17'34.43E	Erven
444	TLHABOLOGANG	2772	0	26°19'30.61S	26°17'33.51E	Erven
445	TLHABOLOGANG	2225	0	26°19'39.63S	26°17'38.74E	Erven
446	TLHABOLOGANG	2529	0	26°19'45.58S	26°17'42.09E	Erven
447	TLHABOLOGANG	2221	0	26°19'41.06S	26°17'39.57E	Erven

448	TLHABOLOGANG	2222	0	26°19'40.71S	26°17'39.38E	Erven
449	TLHABOLOGANG	2539	0	26°19'46.84S	26°17'41.75E	Erven
450	TLHABOLOGANG	2540	0	26°19'47.05S	26°17'42.25E	Erven
451	TLHABOLOGANG	2528	0	26°19'45.16S	26°17'41.85E	Erven
452	COLIGNY	160	0	26°20'11.81S	26°19'46.94E	Erven
453	COLIGNY	152	0	26°20'12.29S	26°19'42.23E	Erven
454	COLIGNY	244	0	26°20'26.55S	26°19'18.03E	Erven
455	COLIGNY	543	0	26°20'15.31S	26°19'44.94E	Erven
456	COLIGNY	540	0	26°20'17.31S	26°19'40.53E	Erven
457	COLIGNY	178	0	26°20'18.92S	26°19'24.69E	Erven
458	COLIGNY	192	0	26°20'18.04S	26°19'33.74E	Erven
459	COLIGNY	224	0	26°20'21.94S	26°19'22.74E	Erven
460	COLIGNY	233	0	26°20'23.36S	26°19'27.72E	Erven
461	COLIGNY	237	0	26°20'22.48S	26°19'30.84E	Erven
462	TSHING	1625	0	26°19'33.76S	26°47'45.36E	Erven
463	TSHING	1623	0	26°19'34.87S	26°47'47.37E	Erven
464	TSHING	3171	0	26°19'27.87S	26°47'28.26E	Erven
465	TSHING	2916	0	26°19'26.61S	26°47'19.52E	Erven
466	TSHING	3228	0	26°19'34.1S	26°47'33.08E	Erven
467	TSHING	3239	0	26°19'35.07S	26°47'39.41E	Erven
468	TSHING	3243	0	26°19'35.35S	26°47'40.87E	Erven
469	TSHING	3250	0	26°19'35.78S	26°47'44.49E	Erven
470	TSHING	3213	0	26°19'31.88S	26°47'23.14E	Erven
471	TSHING	2966	0	26°19'29.76S	26°47'8.85E	Erven
472	TSHING	2973	0	26°19'26.91S	26°47'8.13E	Erven
473	TSHING	3218	0	26°19'32.55S	26°47'27.69E	Erven
474	TSHING	1620	0	26°19'36.07S	26°47'48.33E	Erven
475	TSHING	2810	0	26°19'27.45S	26°47'12.25E	Erven
476	TSHING	1293	0	26°19'29.75S	26°47'30.31E	Erven
477	TSHING	1426	0	26°19'30.44S	26°47'32.26E	Erven
478	TSHING	1421	0	26°19'31.83S	26°47'33.23E	Erven
479	TSHING	2850	0	26°19'26.33S	26°47'15.71E	Erven
480	TSHING	1308	0	26°19'33.32S	26°47'36.74E	Erven
481	TSHING	1313	0	26°19'32.3S	26°47'36.96E	Erven
482	TSHING	3130	0	26°19'28.27S	26°47'23.64E	Erven
483	TSHING	3141	0	26°19'27.26S	26°47'25.29E	Erven
484	TSHING	1624	0	26°19'34.19S	26°47'47.25E	Erven
485	TSHING	2887	0	26°19'28.04S	26°47'20.2E	Erven
486	TLHABOLOGANG	3047	0	26°19'32.29S	26°17'32.39E	Erven
487	TLHABOLOGANG	3079	0	26°19'34.31S	26°17'31.35E	Erven
488	TLHABOLOGANG	3086	0	26°19'31.16S	26°17'29.67E	Erven
489	TLHABOLOGANG	3006	0	26°19'33.68S	26°17'29.61E	Erven
490	TLHABOLOGANG	3013	0	26°19'30.26S	26°17'27.82E	Erven
491	TLHABOLOGANG	2550	0	26°19'47.77S	26°17'42.42E	Erven
492	TLHABOLOGANG	2557	0	26°19'41.81S	26°17'38.66E	Erven
493	TLHABOLOGANG	2564	0	26°19'44.39S	26°17'40.08E	Erven
494	TLHABOLOGANG	2568	0	26°19'46.39S	26°17'40.77E	Erven
495	TLHABOLOGANG	2575	0	26°19'43.94S	26°17'39.04E	Erven
496	TLHABOLOGANG	2582	0	26°19'41.39S	26°17'37.61E	Erven
497	TLHABOLOGANG	2593	0	26°19'42.13S	26°17'36.07E	Erven
498	TLHABOLOGANG	2600	0	26°19'43.34S	26°17'35.55E	Erven
499	TLHABOLOGANG	2607	0	26°19'44.57S	26°17'38.11E	Erven
500	TLHABOLOGANG	2609	0	26°19'45.71S	26°17'38.83E	Erven
501	TLHABOLOGANG	2620	0	26°19'43.23S	26°17'34.66E	Erven
502	TLHABOLOGANG	2627	0	26°19'37.67S	26°17'36.35E	Erven
503	TLHABOLOGANG	2635	0	26°19'37.94S	26°17'35.72E	Erven
504	TLHABOLOGANG	2642	0	26°19'37.09S	26°17'34.01E	Erven
505	TLHABOLOGANG	2656	0	26°19'35.26S	26°17'32.99E	Erven
506	TLHABOLOGANG	2663	0	26°19'32.34S	26°17'33.17E	Erven
507	TLHABOLOGANG	2122	0	26°19'37.6S	26°17'38.01E	Erven

508	TLHABOLOGANG	2526	0	26°19'44.43S	26°17'41.45E	Erven
509	TLHABOLOGANG	2223	0	26°19'40.35S	26°17'39.15E	Erven
510	TLHABOLOGANG	2527	0	26°19'44.8S	26°17'41.65E	Erven
511	LEEUFONTEIN	64	0	26°20'4.01S	26°29'5.89E	Farm
512	NIEKERK	147	0	26°20'5.69S	26°48'48.85E	Farm
513	CHEYNE	171	0	26°20'6.29S	26°48'36.52E	Farm
514	DOORNPAN	195	0	26°17'46.31S	26°43'38.56E	Farm
515	MAKOKSKRAAL	468	0	26°19'57.93S	26°35'42.73E	Farm
516	ELANDSKUIL	206	0	26°19'44.16S	26°48'23.45E	Farm
517		554	0	26°19'53.66S	26°48'51.27E	Farm
518	ROOIKRAAL	501	0	26°20'2.38S	26°33'46.19E	Farm
519	WILDFONTEIN	201	0	26°18'4.96S	26°30'38.64E	Farm
520	SNEL	112	0	26°20'13.51S	26°48'39.42E	Farm
521	NOVA SCOTIA	69	0	26°20'28.81S	26°19'3.44E	Farm
522	KOPPIESKRAAL	500	0	26°19'33.21S	26°34'28.38E	Farm
523	RATZEGAAISKRAAL	209	0	26°20'13.3S	26°44'11.34E	Farm
524	TREURFONTEIN	73	0	26°20'38.85S	26°17'33.31E	Farm
525	VOGELSTRUISKNOP	479	0	26°17'39.03S	26°24'43.44E	Farm
526	RATZEGAAISKRAAL	204	0	26°21'6.63S	26°42'34.02E	Farm
527	ELANDSKUIL	208	0	26°22'39.65S	26°46'56.59E	Farm
528		593	0	26°19'54.09S	26°31'4.16E	Farm
529	LEEUFONTEIN	67	0	26°20'6.26S	26°22'12.17E	Farm
530	ROODEPOORT	191	0	26°17'39.92S	26°50'5.85E	Farm
531	RIETGAT	108	0	26°21'32.93S	26°25'20.8E	Farm
532	MAKOKSKRAAL	203	0	26°21'5.68S	26°37'37.18E	Farm
533	ELANDSKUIL	205	0	26°19'51.71S	26°47'36.01E	Farm
534	TREURFONTEIN	73	70	26°20'35.98S	26°18'17.47E	Farm Portion
535	LEEUFONTEIN	67	76	26°19'51.67S	26°20'43.65E	Farm Portion
536	ELANDSKUIL	205	7	26°19'42.18S	26°47'57.79E	Farm Portion
537	TREURFONTEIN	73	39	26°19'31.06S	26°17'18.48E	Farm Portion
538	LEEUFONTEIN	67	77	26°19'59.1S	26°19'58.49E	Farm Portion
539	LEEUFONTEIN	67	4	26°19'57.59S	26°23'8.36E	Farm Portion
540	LEEUFONTEIN	67	27	26°20'15.63S	26°23'14.63E	Farm Portion
541	LEEUFONTEIN	67	59	26°20'0.12S	26°22'38.82E	Farm Portion
542	LEEUFONTEIN	67	6	26°19'56.12S	26°23'36.43E	Farm Portion
543	VOGELSTRUISKNOP	479	51	26°20'7.58S	26°25'8.51E	Farm Portion
544	RATZEGAAISKRAAL	204	65	26°19'34.91S	26°42'49.59E	Farm Portion
545	RIETGAT	108	34	26°20'48.51S	26°26'49.43E	Farm Portion
546	NOVA SCOTIA	69	2	26°20'24.37S	26°19'9.78E	Farm Portion
547	LEEUFONTEIN	67	67	26°20'5.66S	26°22'1.02E	Farm Portion
548	NOVA SCOTIA	69	3	26°20'38.34S	26°18'58.44E	Farm Portion
549	ELANDSKUIL	205	6	26°19'58.92S	26°47'42.68E	Farm Portion
550	LEEUFONTEIN	67	30	26°20'19.72S	26°20'13.24E	Farm Portion
551	LEEUFONTEIN	67	5	26°20'31.53S	26°22'58.68E	Farm Portion
552	TREURFONTEIN	73	5	26°19'38.54S	26°17'27.73E	Farm Portion
553	LEEUFONTEIN	67	14	26°19'26.14S	26°21'56.22E	Farm Portion
554	RIETGAT	108	0	26°19'58.73S	26°26'21.2E	Farm Portion
555	VOGELSTRUISKNOP	479	52	26°20'13.14S	26°25'3.19E	Farm Portion
556	VOGELSTRUISKNOP	479	54	26°20'22.2S	26°24'52.13E	Farm Portion
557	VOGELSTRUISKNOP	479	58	26°20'33.76S	26°24'52.44E	Farm Portion
558	WILDFONTEIN	201	20	26°19'29.27S	26°32'2.57E	Farm Portion
559	LEEUFONTEIN	64	31	26°19'28.87S	26°27'52.85E	Farm Portion
560	LEEUFONTEIN	64	27	26°19'56.4S	26°28'5.54E	Farm Portion
561	DOORNPAN	195	39	26°19'32.24S	26°47'3.76E	Farm Portion
562	WILDFONTEIN	201	17	26°18'7.1S	26°32'5.9E	Farm Portion
563	WILDFONTEIN	201	11	26°19'38.96S	26°32'47.99E	Farm Portion
564	LEEUFONTEIN	64	38	26°19'43.89S	26°29'7.97E	Farm Portion
565	LEEUFONTEIN	64	39	26°19'34.56S	26°30'8.21E	Farm Portion
566	DOORNPAN	195	25	26°19'45.45S	26°44'53.57E	Farm Portion
567	DOORNPAN	195	9	26°19'31.99S	26°45'44.83E	Farm Portion

568	DOORNPAN	195	36	26°19'38.97S	26°46'15.9E	Farm Portion
569	DOORNPAN	195	34	26°20'0.37S	26°45'20.01E	Farm Portion
570	RATZEGAAISKRAAL	204	12	26°20'48.42S	26°44'22.87E	Farm Portion
571	LEEUFONTEIN	67	74	26°19'57.19S	26°21'35.39E	Farm Portion
572	VOGELSTRUISKNOP	479	61	26°20'28.7S	26°25'15.73E	Farm Portion
573	WILDFONTEIN	201	19	26°18'58.28S	26°32'39.96E	Farm Portion
574	LEEUFONTEIN	64	34	26°20'6.26S	26°27'30.63E	Farm Portion
575	LEEUFONTEIN	64	36	26°19'56.32S	26°28'33.85E	Farm Portion
576	DOORNPAN	195	37	26°19'33.89S	26°46'51.94E	Farm Portion
577	DOORNPAN	195	13	26°19'15.62S	26°45'38.54E	Farm Portion
578	DOORNPAN	195	35	26°19'51.67S	26°45'39.47E	Farm Portion
579	LEEUFONTEIN	64	0	26°20'19.43S	26°28'22.63E	Farm Portion
580	WILDFONTEIN	201	26	26°19'11.32S	26°32'23.17E	Farm Portion
581	WILDFONTEIN	201	21	26°19'11.24S	26°30'44.82E	Farm Portion
582	RATZEGAAISKRAAL	204	2	26°20'59.03S	26°43'10.24E	Farm Portion
583	WILDFONTEIN	201	28	26°19'16.92S	26°32'38.46E	Farm Portion
584	WILDFONTEIN	201	29	26°19'26.38S	26°33'2.77E	Farm Portion
585	WILDFONTEIN	201	2	26°19'18.86S	26°31'1.15E	Farm Portion
586	MAKOKSKRAAL	203	37	26°19'57.06S	26°37'8.75E	Farm Portion
587	TREURFONTEIN	73	60	26°20'9.5S	26°17'25.58E	Farm Portion
588	ROODEPOORT	191	29	26°19'53.27S	26°50'5.78E	Farm Portion
589	RIETGAT	108	25	26°20'21.01S	26°26'0.64E	Farm Portion
590	ROOIKRAAL	501	1	26°19'48S	26°33'55.95E	Farm Portion
591	KOPPIESKRAAL	500	0	26°19'29.75S	26°34'0.79E	Farm Portion
592	MAKOKSKRAAL	203	38	26°20'55.28S	26°39'7.58E	Farm Portion
593	MAKOKSKRAAL	203	10	26°20'23.01S	26°37'42.83E	Farm Portion
594	MAKOKSKRAAL	203	20	26°20'26.67S	26°37'44.53E	Farm Portion
595	MAKOKSKRAAL	203	34	26°20'28.47S	26°37'26.4E	Farm Portion
596	MAKOKSKRAAL	468	0	26°20'15.1S	26°35'49.41E	Farm Portion
597	MAKOKSKRAAL	203	50	26°20'20.46S	26°37'35.58E	Farm Portion
598	MAKOKSKRAAL	203	51	26°20'19.75S	26°37'53.17E	Farm Portion
599	MAKOKSKRAAL	203	28	26°20'11.82S	26°37'51.99E	Farm Portion
600	MAKOKSKRAAL	203	21	26°20'29.19S	26°37'20.43E	Farm Portion
601	ROODEPOORT	191	151	26°19'44.83S	26°50'21.58E	Farm Portion
602	CHEYNE	171	3	26°20'4.79S	26°48'54.72E	Farm Portion
603	NIEKERK	147	0	26°20'26.76S	26°48'45.29E	Farm Portion
604		593	0	26°20'6.72S	26°31'9.95E	Farm Portion
605	CHEYNE	171	2	26°20'5.46S	26°48'39.19E	Farm Portion
606	LEEUFONTEIN	67	21	26°20'38.63S	26°23'33.19E	Farm Portion
607	LEEUFONTEIN	67	2	26°19'14.78S	26°20'21.03E	Farm Portion
608	TREURFONTEIN	73	35	26°20'38.05S	26°19'31.86E	Farm Portion
609	LEEUFONTEIN	67	35	26°20'6.86S	26°21'23.18E	Farm Portion
610	LEEUFONTEIN	67	43	26°19'46.82S	26°22'21.87E	Farm Portion
611	TREURFONTEIN	73	63	26°20'33S	26°18'1.38E	Farm Portion
612	NOVA SCOTIA	69	0	26°20'30.85S	26°18'57.76E	Farm Portion
613	VOGELSTRUISKNOP	479	59	26°20'32.32S	26°24'59.24E	Farm Portion
614	TREURFONTEIN	73	38	26°20'26.73S	26°19'45.93E	Farm Portion
615	LEEUFONTEIN	67	66	26°19'52.23S	26°21'38.34E	Farm Portion
616	TREURFONTEIN	73	28	26°20'51.95S	26°19'18.99E	Farm Portion
617	LEEUFONTEIN	67	7	26°20'29.58S	26°24'11.48E	Farm Portion
618	LEEUFONTEIN	67	60	26°19'34.54S	26°23'30.69E	Farm Portion
619	VOGELSTRUISKNOP	479	55	26°20'25.82S	26°24'47.68E	Farm Portion
620	SNEL	112	1	26°20'7.64S	26°48'34.82E	Farm Portion
621	SNEL	112	0	26°20'13.51S	26°48'39.42E	Farm Portion
622	ROODEPOORT	191	17	26°20'10.67S	26°49'3.78E	Farm Portion
623	ROODEPOORT	191	22	26°20'13.42S	26°48'48.68E	Farm Portion
624	ROODEPOORT	191	165	26°20'12.5S	26°49'2.28E	Farm Portion
625	ROODEPOORT	191	199	26°19'51.8S	26°49'45.77E	Farm Portion
626	ELANDSKUIL	205	4	26°19'33.74S	26°47'3.8E	Farm Portion
627	ROODEPOORT	191	196	26°20'2.07S	26°49'12.16E	Farm Portion

628	ROODEPOORT	191	219	26°20'8.06S	26°49'23.54E	Farm Portion
629	ROODEPOORT	191	89	26°19'40.23S	26°50'2.76E	Farm Portion
630	ROODEPOORT	191	101	26°19'15.55S	26°50'43.47E	Farm Portion
631	ROODEPOORT	191	189	26°19'45.52S	26°49'45.85E	Farm Portion
632	ROODEPOORT	191	197	26°20'0.5S	26°49'18.46E	Farm Portion
633	TREURFONTEIN	73	20	26°19'47.53S	26°17'24.98E	Farm Portion
634	TREURFONTEIN	73	40	26°19'41.11S	26°17'12.56E	Farm Portion
635	TREURFONTEIN	73	65	26°20'10.66S	26°18'5.45E	Farm Portion
636	ELANDSKUIL	205	13	26°19'38.13S	26°47'54.11E	Farm Portion
637	LEEUFONTEIN	64	37	26°19'49.41S	26°28'52.05E	Farm Portion
638	LEEUFONTEIN	64	40	26°19'41.88S	26°29'22.56E	Farm Portion
639	LEEUFONTEIN	64	41	26°19'39.9S	26°29'39.37E	Farm Portion
640	DOORNPAN	195	14	26°19'43.85S	26°45'30.27E	Farm Portion
641	RIETGAT	108	22	26°20'13.31S	26°26'47.35E	Farm Portion
642	ROOIKRAAL	501	0	26°20'10.89S	26°33'49.31E	Farm Portion
643	KOPPIESKRAAL	500	1	26°19'47.48S	26°33'56.21E	Farm Portion
644	ELANDSKUIL	208	163	26°20'39.27S	26°47'58.69E	Farm Portion
645	ELANDSKUIL	208	129	26°20'23.07S	26°46'11.13E	Farm Portion
646	ROODEPOORT	191	166	26°20'8.98S	26°48'55.56E	Farm Portion
647	ROODEPOORT	191	221	26°20'11.89S	26°48'51.16E	Farm Portion
648	ELANDSKUIL	206	5	26°20'3.17S	26°48'24.86E	Farm Portion
649	ELANDSKUIL	205	5	26°19'41.79S	26°47'48.05E	Farm Portion
650	RATZEGAAISKRAAL	209	0	26°20'13.3S	26°44'11.34E	Farm Portion
651	RATZEGAAISKRAAL	209	2	26°20'17.22S	26°44'42.43E	Farm Portion
652	ELANDSKUIL	205	10	26°19'50.22S	26°47'17.87E	Farm Portion
653	ROODEPOORT	191	194	26°20'3.55S	26°49'0.94E	Farm Portion
654	LEEUFONTEIN	67	44	26°19'28.69S	26°22'58.67E	Farm Portion
655	LEEUFONTEIN	67	3	26°20'5.76S	26°22'55.13E	Farm Portion
656	LEEUFONTEIN	64	30	26°19'54.01S	26°28'26.31E	Farm Portion
657	LEEUFONTEIN	64	5	26°19'20.53S	26°29'43.47E	Farm Portion
658	WILDFONTEIN	201	0	26°20'6.18S	26°31'57.81E	Farm Portion
659	RATZEGAAISKRAAL	204	8	26°20'37.62S	26°41'34.32E	Farm Portion
660	RATZEGAAISKRAAL	204	59	26°20'52.49S	26°40'20.58E	Farm Portion
661	VOGELSTRUISKNOP	479	53	26°20'17.89S	26°24'56.85E	Farm Portion
662	LEEUFONTEIN	64	35	26°20'0.61S	26°28'6.02E	Farm Portion
663	ROODEPOORT	191	128	26°20'14.41S	26°48'54.5E	Farm Portion
664	DOORNPAN	195	38	26°19'34.33S	26°46'43.79E	Farm Portion
665	LEEUFONTEIN	64	29	26°20'8.74S	26°30'16.81E	Farm Portion
666	ROODEPOORT	191	118	26°20'15.07S	26°49'14.32E	Farm Portion
667	MAKOKSKRAAL	203	39	26°20'21.08S	26°37'54.52E	Farm Portion
668	MAKOKSKRAAL	203	40	26°20'22.01S	26°37'55.18E	Farm Portion
669	MAKOKSKRAAL	203	32	26°20'29.38S	26°37'24.03E	Farm Portion
670	MAKOKSKRAAL	203	6	26°21'13.08S	26°38'13.29E	Farm Portion
671	MAKOKSKRAAL	468	2	26°20'22.1S	26°35'29.79E	Farm Portion
672	TREURFONTEIN	73	64	26°20'26.55S	26°18'17.4E	Farm Portion
673	VOGELSTRUISKNOP	479	60	26°20'30.39S	26°25'7.69E	Farm Portion
674	LEEUFONTEIN	64	6	26°19'51.75S	26°29'24.67E	Farm Portion
675	WILDFONTEIN	201	9	26°19'29.15S	26°30'25.39E	Farm Portion
676	WILDFONTEIN	201	13	26°18'41.2S	26°31'42.94E	Farm Portion
677	ROODEPOORT	191	241	26°19'43.23S	26°50'14.11E	Farm Portion
678	ROODEPOORT	191	203	26°19'39.35S	26°50'18.91E	Farm Portion
679	WILDFONTEIN	201	27	26°19'14.99S	26°32'33.67E	Farm Portion
680	WILDFONTEIN	201	4	26°18'18.93S	26°30'37.83E	Farm Portion
681	LEEUFONTEIN	64	32	26°20'16.57S	26°27'31.73E	Farm Portion
682	MAKOKSKRAAL	203	13	26°19'23.27S	26°37'25.87E	Farm Portion
683	MAKOKSKRAAL	203	49	26°20'24.83S	26°37'13.73E	Farm Portion
684	MAKOKSKRAAL	203	1	26°19'34.21S	26°38'39.01E	Farm Portion
685	SNEL	112	4	26°20'5.09S	26°48'44.57E	Farm Portion
686	SNEL	112	2	26°20'7.02S	26°48'43.02E	Farm Portion
687	SNEL	112	3	26°20'5.73S	26°48'34.07E	Farm Portion

688	ROODEPOORT	191	167	26°20'8.28S	26°48'52.5E	Farm Portion
689	ELANDSKUIL	206	3	26°20'8.29S	26°48'27.4E	Farm Portion
690	ROODEPOORT	191	156	26°19'56.83S	26°49'50.59E	Farm Portion
691	ELANDSKUIL	205	3	26°19'46.82S	26°47'28.99E	Farm Portion
692	RATZEGAAISKRAAL	204	60	26°20'47.67S	26°41'33.71E	Farm Portion
693	RATZEGAAISKRAAL	204	62	26°20'26.07S	26°44'22.46E	Farm Portion
694	WILDFONTEIN	201	25	26°19'3.89S	26°31'47.83E	Farm Portion
695	WILDFONTEIN	201	22	26°19'26.12S	26°30'22.87E	Farm Portion
696	MAKOKSKRAAL	203	35	26°19'44.77S	26°36'53.95E	Farm Portion
697	MAKOKSKRAAL	203	47	26°20'37.18S	26°36'42.1E	Farm Portion
698	MAKOKSKRAAL	203	31	26°20'31.11S	26°37'32.39E	Farm Portion
699	MAKOKSKRAAL	203	15	26°20'30.91S	26°37'17.71E	Farm Portion
700	ROODEPOORT	191	201	26°19'46.67S	26°49'58.05E	Farm Portion
701	ROODEPOORT	191	152	26°19'46S	26°50'22.6E	Farm Portion
702	NIEKERK	147	2	26°20'5.03S	26°48'49.29E	Farm Portion
703	RATZEGAAISKRAAL	204	61	26°20'39.99S	26°43'5.01E	Farm Portion
704	WILDFONTEIN	201	23	26°19'0.8S	26°31'6E	Farm Portion
705	WILDFONTEIN	201	24	26°18'59.7S	26°31'11.6E	Farm Portion
706	MAKOKSKRAAL	203	48	26°20'31.26S	26°36'57.56E	Farm Portion
707	MAKOKSKRAAL	203	16	26°19'59.72S	26°36'31.34E	Farm Portion
708	MAKOKSKRAAL	203	52	26°20'34.38S	26°39'22.92E	Farm Portion
709	RATZEGAAISKRAAL	204	9	26°21'1.02S	26°41'44.47E	Farm Portion
710	ELANDSKUIL	208	202	26°20'9.54S	26°44'59.88E	Farm Portion
711	RATZEGAAISKRAAL	209	1	26°20'36.78S	26°43'42.28E	Farm Portion
712		554	0	26°19'48.85S	26°48'49.46E	Farm Portion
713	ROODEPOORT	191	242	26°19'43.93S	26°50'13.81E	Farm Portion
714	ROODEPOORT	191	243	26°19'41.94S	26°50'11.47E	Farm Portion
715	CHEYNE	171	1	26°20'7.27S	26°48'38.65E	Farm Portion
716	ROODEPOORT	191	198	26°19'56.35S	26°49'31.12E	Farm Portion
717	ROODEPOORT	191	216	26°19'50.05S	26°49'18.24E	Farm Portion
718	TREURFONTEIN	73	14	26°19'29.04S	26°17'28.45E	Farm Portion
719	ROODEPOORT	191	202	26°19'44.11S	26°50'5.4E	Farm Portion
720	ROODEPOORT	191	88	26°19'41.9S	26°49'54.13E	Farm Portion
721	ELANDSKUIL	208	76	26°20'18.39S	26°45'14.63E	Farm Portion
722	ROODEPOORT	191	123	26°20'1.34S	26°49'36.64E	Farm Portion
723	ELANDSKUIL	206	2	26°20'6.31S	26°48'23.86E	Farm Portion
724	TREURFONTEIN	73	32	26°20'20.17S	26°18'8.31E	Farm Portion
725	TREURFONTEIN	73	61	26°20'22.35S	26°18'20.37E	Farm Portion
726	ROODEPOORT	191	244	26°19'39.79S	26°50'8.74E	Farm Portion
727	ROODEPOORT	191	92	26°19'20.89S	26°50'11.25E	Farm Portion
728	TREURFONTEIN	73	27	26°20'24.83S	26°17'44.29E	Farm Portion
729	ROODEPOORT	191	246	26°19'32.77S	26°50'1.6E	Farm Portion
730	ELANDSKUIL	205	0	26°20'6.94S	26°48'12.16E	Farm Portion
731	ROODEPOORT	191	139	26°19'47.59S	26°49'34.53E	Farm Portion
732	TREURFONTEIN	73	21	26°19'57.44S	26°17'47.75E	Farm Portion
733	TREURFONTEIN	73	62	26°20'29.43S	26°18'31.93E	Farm Portion
734	ROODEPOORT	191	93	26°19'44.67S	26°51'2.64E	Farm Portion
735	ROODEPOORT	191	247	26°19'36.04S	26°50'12.11E	Farm Portion
736	NIEKERK	147	1	26°20'7.29S	26°48'48.94E	Farm Portion
737	ROODEPOORT	191	200	26°19'49.32S	26°49'50.38E	Farm Portion
738	ROODEPOORT	191	195	26°20'3.27S	26°49'5.8E	Farm Portion
739	ROODEPOORT	191	245	26°19'35.21S	26°50'2.91E	Farm Portion
740	ELANDSKUIL	205	11	26°20'2.42S	26°47'48.95E	Farm Portion
741	DOORNPAN	195	42	26°19'15.8S	26°46'50.89E	Farm Portion
742		598	0	26°19'48.97S	26°48'21.79E	Farm Portion
743	TSHING	3251	0	26°19'34.88S	26°47'33.16E	Public Place
744	TSHING	2980	0	26°19'31.11S	26°47'8.3E	Public Place
745	TLHABOLOGANG	2776	0	26°19'40.49S	26°17'32.12E	Public Place

Development footprint¹ vertices:
 No development footprint(s) specified.

Wind and Solar developments with an approved Environmental Authorisation or applications under consideration within 30 km of the proposed area

No	EIA Reference No	Classification	Status of application	Distance from proposed area (km)
1	12/12/20/2149	Solar PV	Approved	25.7
2	14/12/16/3/3/2/1093/AM3	Solar PV	Approved	20.5
3	14/12/16/3/3/2/2148	Solar PV	Approved	27.6
4	14/12/16/3/3/2/1093	Solar PV	Approved	20.5
5	14/12/16/3/3/2/2107	Solar PV	Approved	27.6
6	14/12/16/3/3/1/1062/AM	Solar PV	Approved	29.9
7	12/12/20/2149/A3	Solar PV	Approved	25.7
8	14/12/16/3/3/2/2184	Solar PV	Approved	0
9	14/12/16/3/3/2/2149	Solar PV	Approved	27.6
10	14/12/16/3/3/2/2106	Solar PV	Approved	27.6
11	14/12/16/3/3/2/2258	Solar PV	Approved	28.1
12	14/12/16/3/3/2/1062	Solar PV	Approved	29.9
13	14/12/16/3/3/2/2108	Solar PV	Approved	27.6
14	14/12/16/3/3/2/2257	Solar PV	Approved	28.1
15	14/12/16/3/3/2/1091/AM3	Solar PV	Approved	20.5
16	14/12/16/3/3/2/1091	Solar PV	Approved	20.5

Environmental Management Frameworks relevant to the application

No intersections with EMF areas found.

Environmental screening results and assessment outcomes

The following sections contain a summary of any development incentives, restrictions, exclusions or prohibitions that apply to the proposed development site as well as the most environmental sensitive features on the site based on the site sensitivity screening results for the application classification that was selected. The application classification selected for this report is:

Infrastructure | Transport Services | Roads | Public.

Relevant development incentives, restrictions, exclusions or prohibitions

The following development incentives, restrictions, exclusions or prohibitions and their implications that apply to this site are indicated below.

Incentive, restriction	Implication
------------------------	-------------

¹ “development footprint”, means the area within the site on which the development will take place and includes all ancillary developments for example roads, power lines, boundary walls, paving etc. which require vegetation clearance or which will be disturbed and for which the application has been submitted.

or prohibition	
Strategic Transmission Corridor-Northern corridor	https://screening.environment.gov.za/ScreeningDownloads/DevelopmentZones/Combined_EGI.pdf
Main Electricity Distribution Substation	https://screening.environment.gov.za/ScreeningDownloads/DevelopmentZones/Distribution_Transmission.pdf
South African Protected Areas	https://screening.environment.gov.za/ScreeningDownloads/DevelopmentZones/SAPAD_OR_2023_Q4_Metadata.pdf

Proposed Development Area Environmental Sensitivity

The following summary of the development site environmental sensitivities is identified. Only the highest environmental sensitivity is indicated. The footprint environmental sensitivities for the proposed development footprint as identified, are indicative only and must be verified on site by a suitably qualified person before the specialist assessments identified below can be confirmed.

Theme	Very High sensitivity	High sensitivity	Medium sensitivity	Low sensitivity
Agriculture Theme		X		
Animal Species Theme		X		
Aquatic Biodiversity Theme	X			
Archaeological and Cultural Heritage Theme	X			
Civil Aviation Theme		X		
Defence Theme				X
Paleontology Theme			X	
Plant Species Theme			X	
Terrestrial Biodiversity Theme	X			

Specialist assessments identified

Based on the selected classification, and the known impacts associated with the proposed development, the following list of specialist assessments have been identified for inclusion in the assessment report. It is the responsibility of the EAP to confirm this list and to motivate in the assessment report, the reason for not including any of the identified specialist study including the provision of photographic evidence of the site situation.

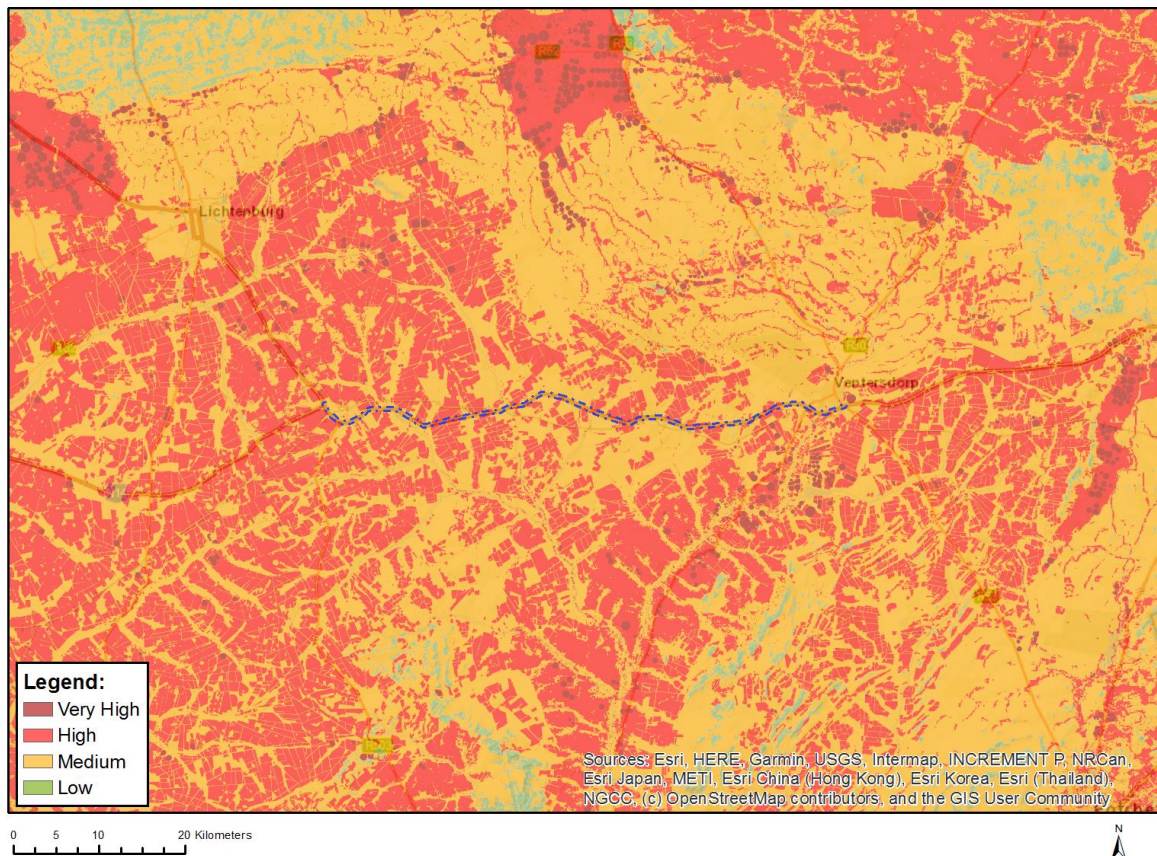
No	Specialist assessment	Assessment Protocol
1	Agricultural Impact Assessment	https://screening.environment.gov.za/ScreeningDownloads/AssessmentProtocols/Gazetted_General_Agriculture_Assessment_Protocols.pdf
2	Landscape/Visual Impact Assessment	https://screening.environment.gov.za/ScreeningDownloads/AssessmentProtocols/Gazetted_General_Requirement_Assessment_Protocols.pdf
3	Archaeological and Cultural Heritage Impact Assessment	https://screening.environment.gov.za/ScreeningDownloads/AssessmentProtocols/Gazetted_General_Requirement_Assessment_Protocols.pdf
4	Palaeontology Impact Assessment	https://screening.environment.gov.za/ScreeningDownloads/AssessmentProtocols/Gazetted_General_Requirement_Assessment_Protocols.pdf

5	Terrestrial Biodiversity Impact Assessment	https://screening.environment.gov.za/ScreeningDownloads/AssessmentProtocols/Gazetted Terrestrial Biodiversity Assessment Protocols.pdf
6	Aquatic Biodiversity Impact Assessment	https://screening.environment.gov.za/ScreeningDownloads/AssessmentProtocols/Gazetted Aquatic Biodiversity Assessment Protocols.pdf
7	Noise Impact Assessment	https://screening.environment.gov.za/ScreeningDownloads/AssessmentProtocols/Gazetted Noise Impacts Assessment Protocol.pdf
8	Traffic Impact Assessment	https://screening.environment.gov.za/ScreeningDownloads/AssessmentProtocols/Gazetted General Requirement Assessment Protocols.pdf
9	Geotechnical Assessment	https://screening.environment.gov.za/ScreeningDownloads/AssessmentProtocols/Gazetted General Requirement Assessment Protocols.pdf
10	Socio-Economic Assessment	https://screening.environment.gov.za/ScreeningDownloads/AssessmentProtocols/Gazetted General Requirement Assessment Protocols.pdf
11	Ambient Air Quality Impact Assessment	https://screening.environment.gov.za/ScreeningDownloads/AssessmentProtocols/Gazetted General Requirement Assessment Protocols.pdf
12	Plant Species Assessment	https://screening.environment.gov.za/ScreeningDownloads/AssessmentProtocols/Gazetted Plant Species Assessment Protocols.pdf
13	Animal Species Assessment	https://screening.environment.gov.za/ScreeningDownloads/AssessmentProtocols/Gazetted Animal Species Assessment Protocols.pdf

Results of the environmental sensitivity of the proposed area.

The following section represents the results of the screening for environmental sensitivity of the proposed site for relevant environmental themes associated with the project classification. It is the duty of the EAP to ensure that the environmental themes provided by the screening tool are comprehensive and complete for the project. Refer to the disclaimer.

MAP OF RELATIVE AGRICULTURE THEME SENSITIVITY

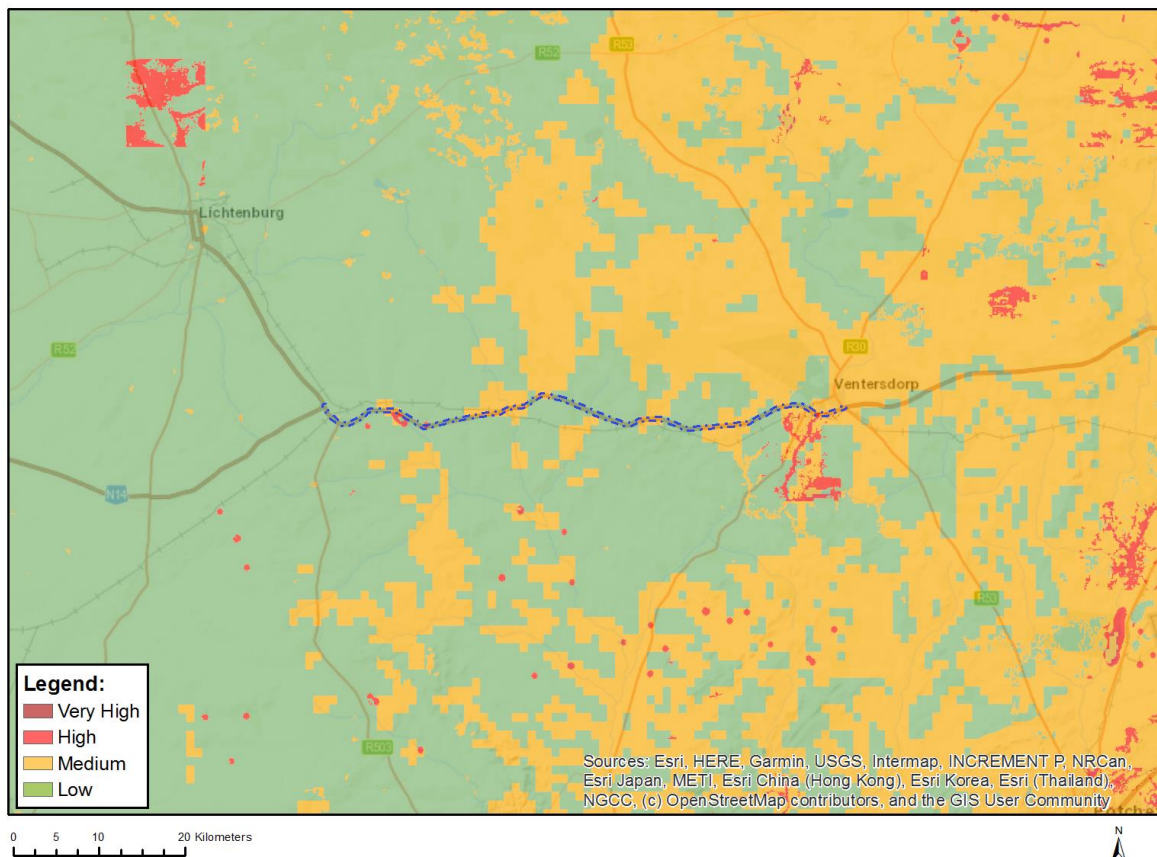


Very High sensitivity	High sensitivity	Medium sensitivity	Low sensitivity
	X		

Sensitivity Features:

Sensitivity	Feature(s)
High	Land capability;09. Moderate-High/10. Moderate-High
High	Annual Crop Cultivation / Planted Pastures Rotation;Land capability;06. Low-Moderate/07. Low-Moderate/08. Moderate
High	Annual Crop Cultivation / Planted Pastures Rotation;Land capability;09. Moderate-High/10. Moderate-High
Low	Land capability;01. Very low/02. Very low/03. Low-Very low/04. Low-Very low/05. Low
Medium	Land capability;06. Low-Moderate/07. Low-Moderate/08. Moderate

MAP OF RELATIVE ANIMAL SPECIES THEME SENSITIVITY



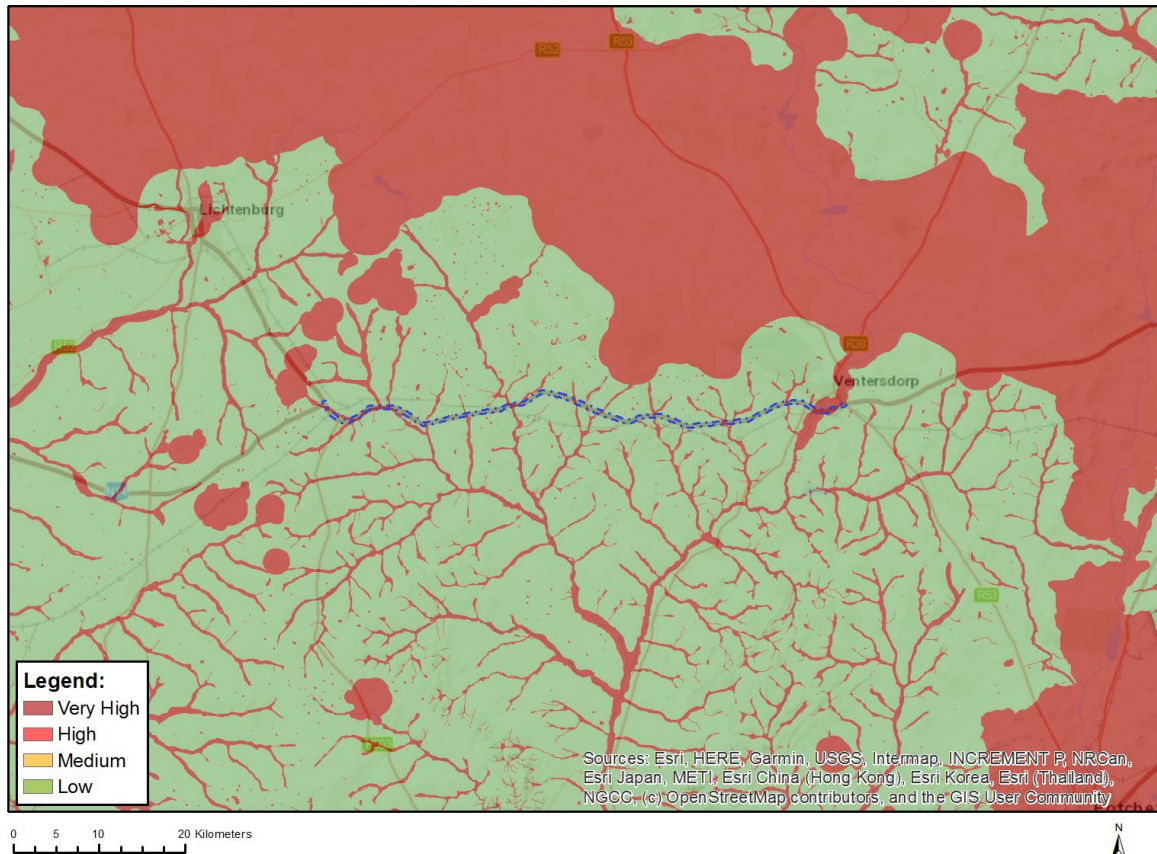
Where only a sensitive plant unique number or sensitive animal unique number is provided in the screening report and an assessment is required, the environmental assessment practitioner (EAP) or specialist is required to email SANBI at eiadatarequests@sanbi.org.za listing all sensitive species with their unique identifiers for which information is required. The name has been withheld as the species may be prone to illegal harvesting and must be protected. SANBI will release the actual species name after the details of the EAP or specialist have been documented.

Very High sensitivity	High sensitivity	Medium sensitivity	Low sensitivity
	X		

Sensitivity Features:

Sensitivity	Feature(s)
High	Aves-Tyto capensis
High	Aves-Mycteria ibis
Low	Subject to confirmation
Medium	Aves-Hydroprogne caspia
Medium	Aves-Tyto capensis
Medium	Mammalia-Crocidura maquassiensis

MAP OF RELATIVE AQUATIC BIODIVERSITY THEME SENSITIVITY

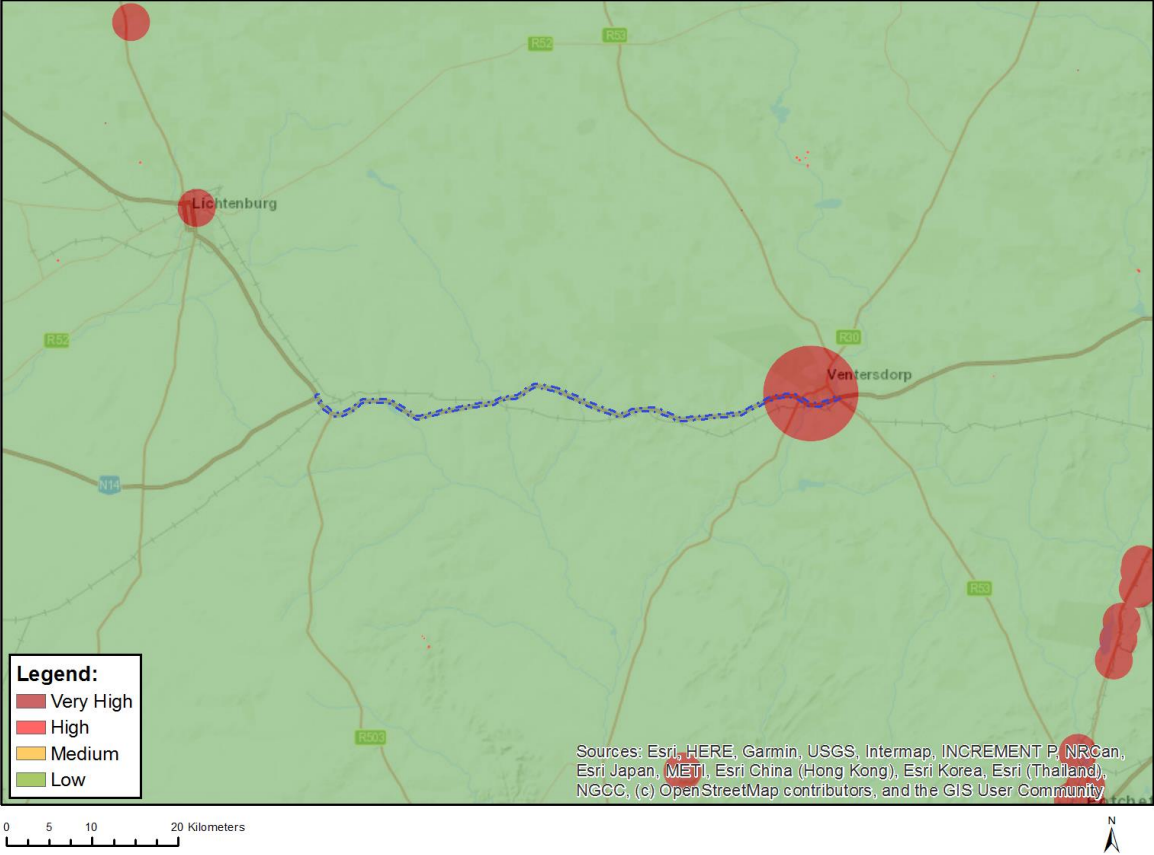


Very High sensitivity	High sensitivity	Medium sensitivity	Low sensitivity
X			

Sensitivity Features:

Sensitivity	Feature(s)
Low	Low sensitivity
Very High	CBA 1
Very High	ESA 1
Very High	ESA 2
Very High	Rivers_C
Very High	Wetlands_Dry Highveld Grassland Bioregion (Depression)
Very High	Wetlands_Dry Highveld Grassland Bioregion (Seep)
Very High	Wetlands_Dry Highveld Grassland Bioregion (Valley-bottom)

MAP OF RELATIVE ARCHAEOLOGICAL AND CULTURAL HERITAGE THEME SENSITIVITY

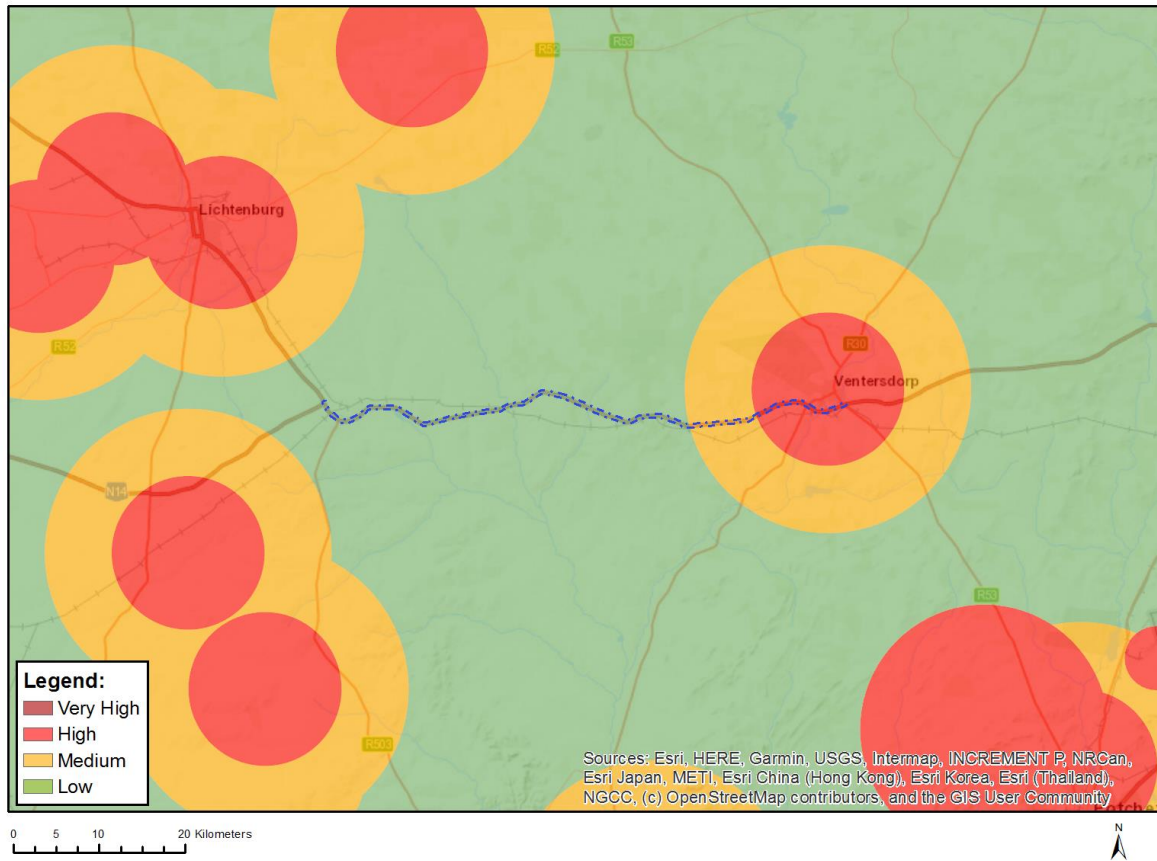


Very High sensitivity	High sensitivity	Medium sensitivity	Low sensitivity
X			

Sensitivity Features:

Sensitivity	Feature(s)
Low	Low sensitivity
Very High	Within 5km of a Grade I Heritage site

MAP OF RELATIVE CIVIL AVIATION THEME SENSITIVITY

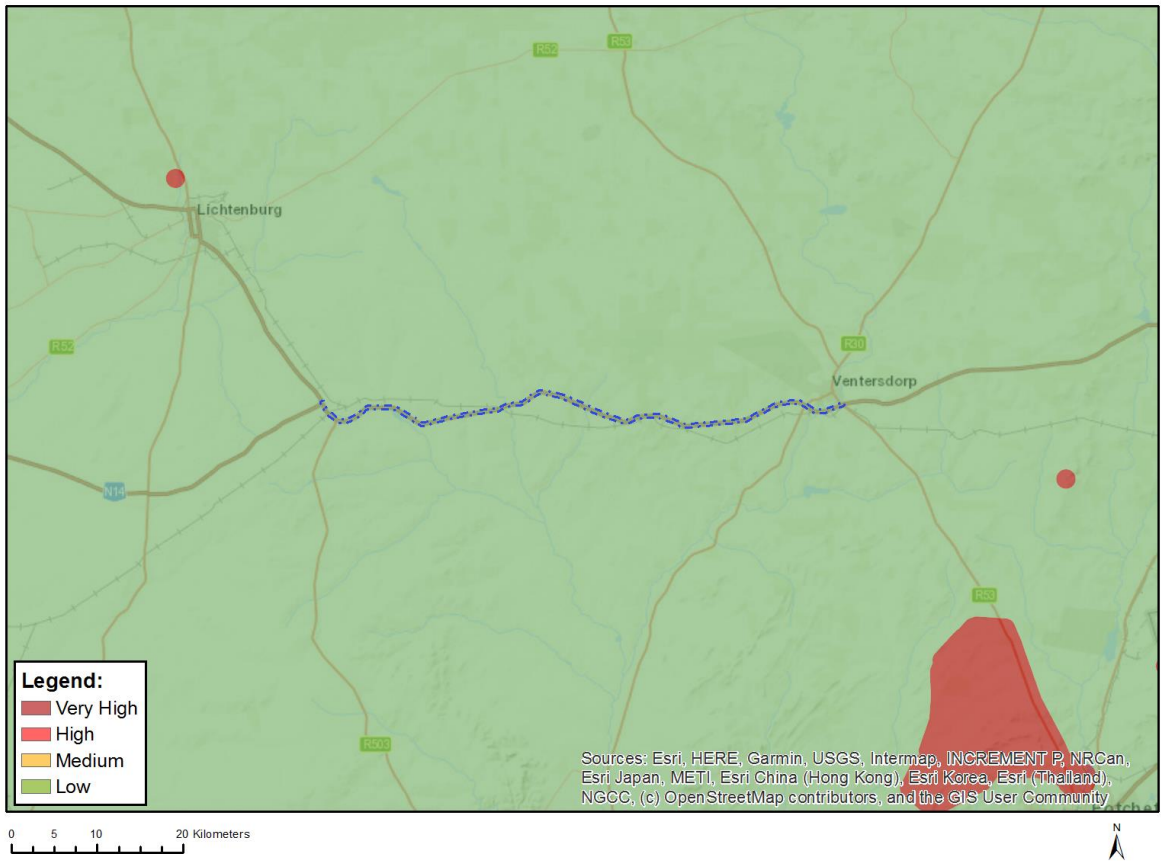


Very High sensitivity	High sensitivity	Medium sensitivity	Low sensitivity
	X		

Sensitivity Features:

Sensitivity	Feature(s)
High	Within 8 km of other civil aviation aerodrome
Low	Low sensitivity
Medium	Between 8 and 15 km of other civil aviation aerodrome

MAP OF RELATIVE DEFENCE THEME SENSITIVITY

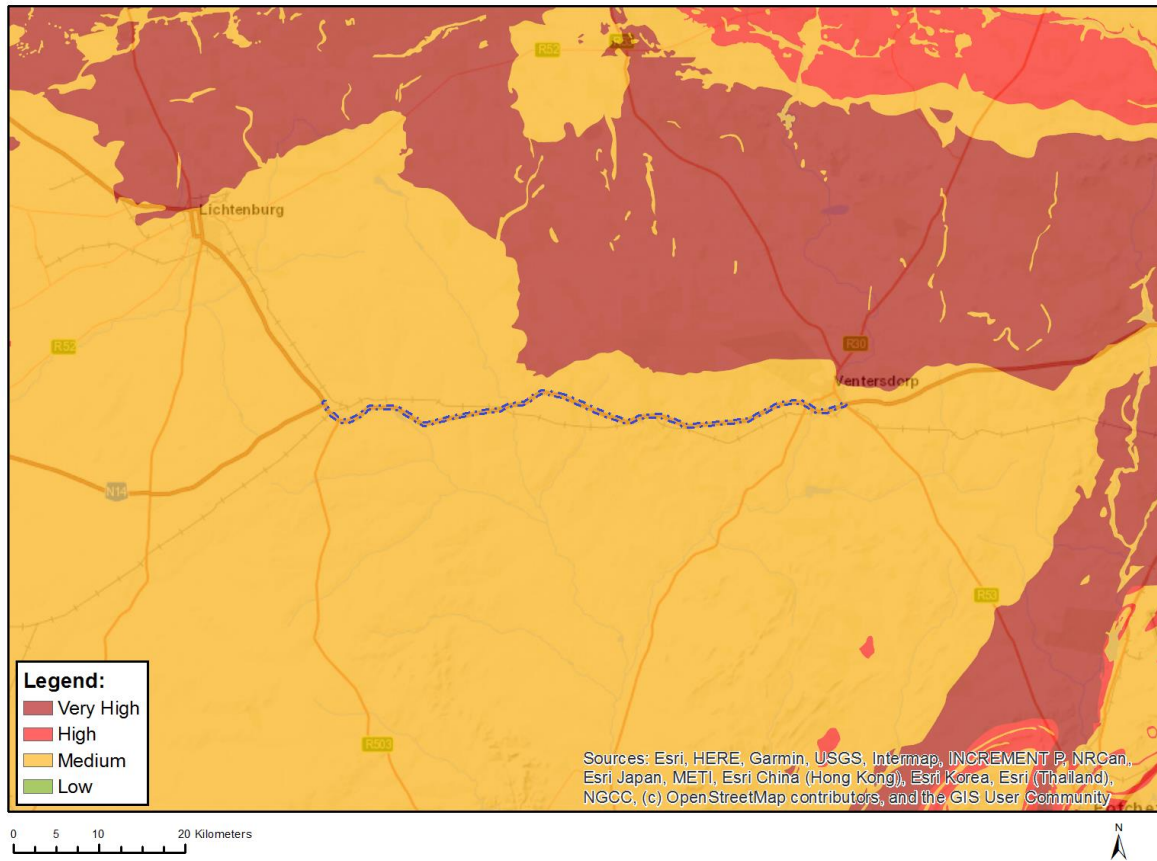


Very High sensitivity	High sensitivity	Medium sensitivity	Low sensitivity
			X

Sensitivity Features:

Sensitivity	Feature(s)
Low	Low Sensitivity

MAP OF RELATIVE PALEONTOLOGY THEME SENSITIVITY

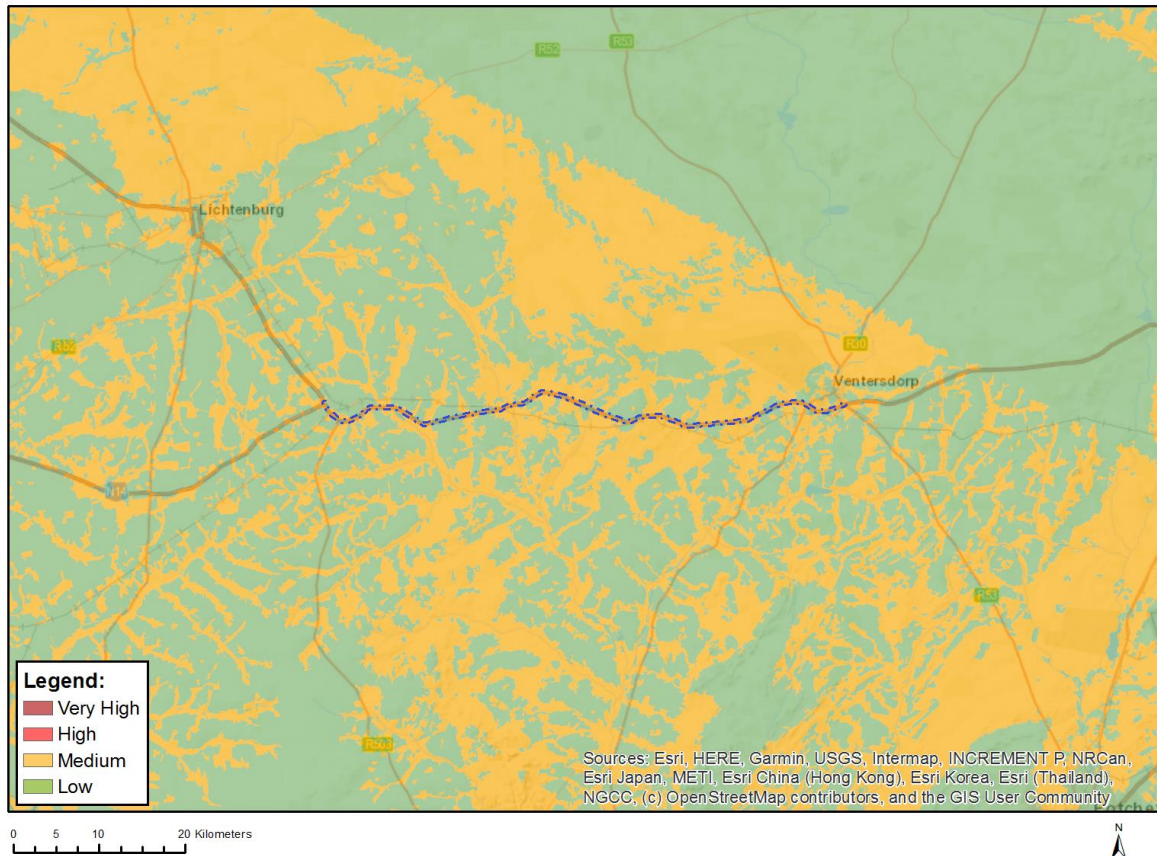


Very High sensitivity	High sensitivity	Medium sensitivity	Low sensitivity
		X	

Sensitivity Features:

Sensitivity	Feature(s)
Low	Features with a Low paleontological sensitivity
Medium	Features with a Medium paleontological sensitivity

MAP OF RELATIVE PLANT SPECIES THEME SENSITIVITY



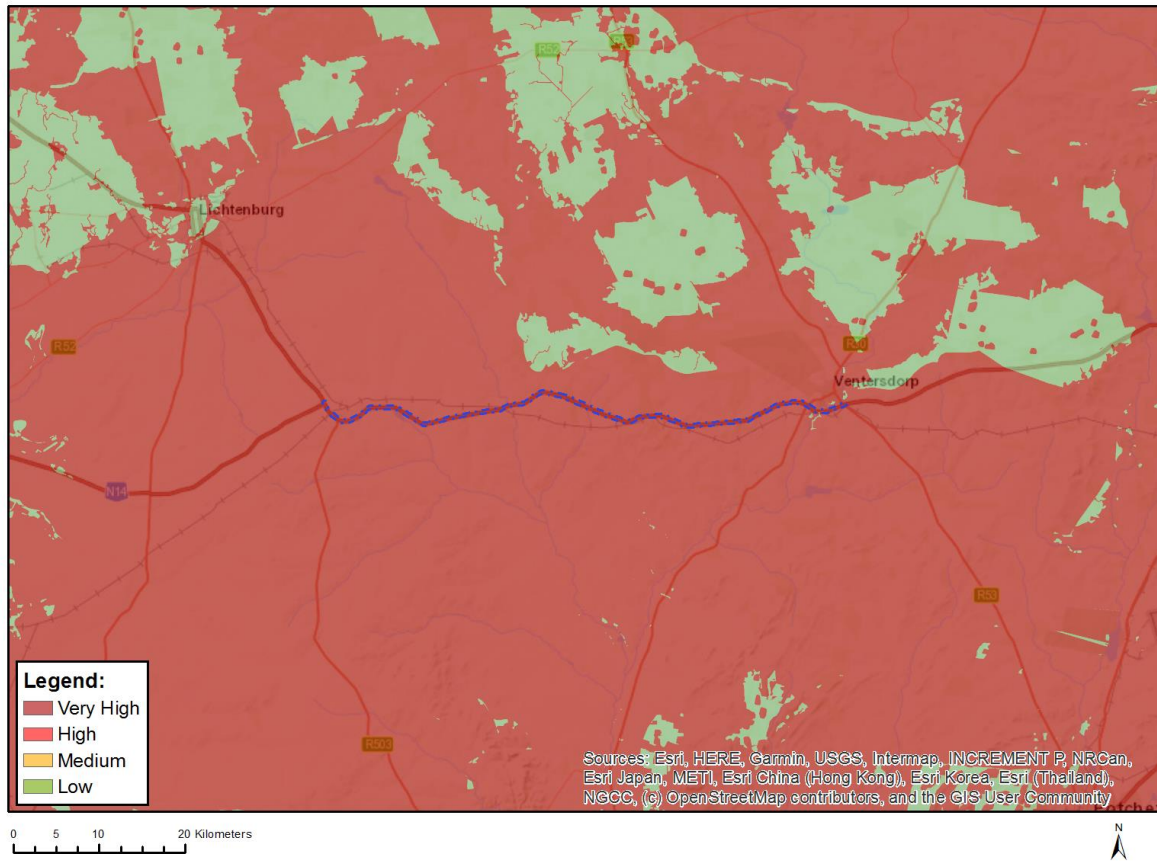
Where only a sensitive plant unique number or sensitive animal unique number is provided in the screening report and an assessment is required, the environmental assessment practitioner (EAP) or specialist is required to email SANBI at eiadatarequests@sanbi.org.za listing all sensitive species with their unique identifiers for which information is required. The name has been withheld as the species may be prone to illegal harvesting and must be protected. SANBI will release the actual species name after the details of the EAP or specialist have been documented.

Very High sensitivity	High sensitivity	Medium sensitivity	Low sensitivity
		X	

Sensitivity Features:

Sensitivity	Feature(s)
Low	Low Sensitivity
Medium	Sensitive species 1261

MAP OF RELATIVE TERRESTRIAL BIODIVERSITY THEME SENSITIVITY



Very High sensitivity	High sensitivity	Medium sensitivity	Low sensitivity
X			

Sensitivity Features:

Sensitivity	Feature(s)
Low	Low Sensitivity
Very High	Makokskraal Private Nature Reserve
Very High	CBA 1
Very High	CBA 2
Very High	ESA 1
Very High	ESA 2
Very High	National Protected Area Expansion Strategy (NPAES)
Very High	EN_Vaal-Vet Sandy Grassland