

**SCREENING REPORT FOR AN ENVIRONMENTAL AUTHORIZATION AS
REQUIRED BY THE 2014 EIA REGULATIONS – PROPOSED SITE
ENVIRONMENTAL SENSITIVITY**

EIA Reference number: N18 section 3

Project name: N18 intersections BA

Project title: N18 intersections BA

Date screening report generated: 12/07/2024 08:56:07

Applicant: SANRAL

Compiler: M Naicker

Compiler signature:
.....

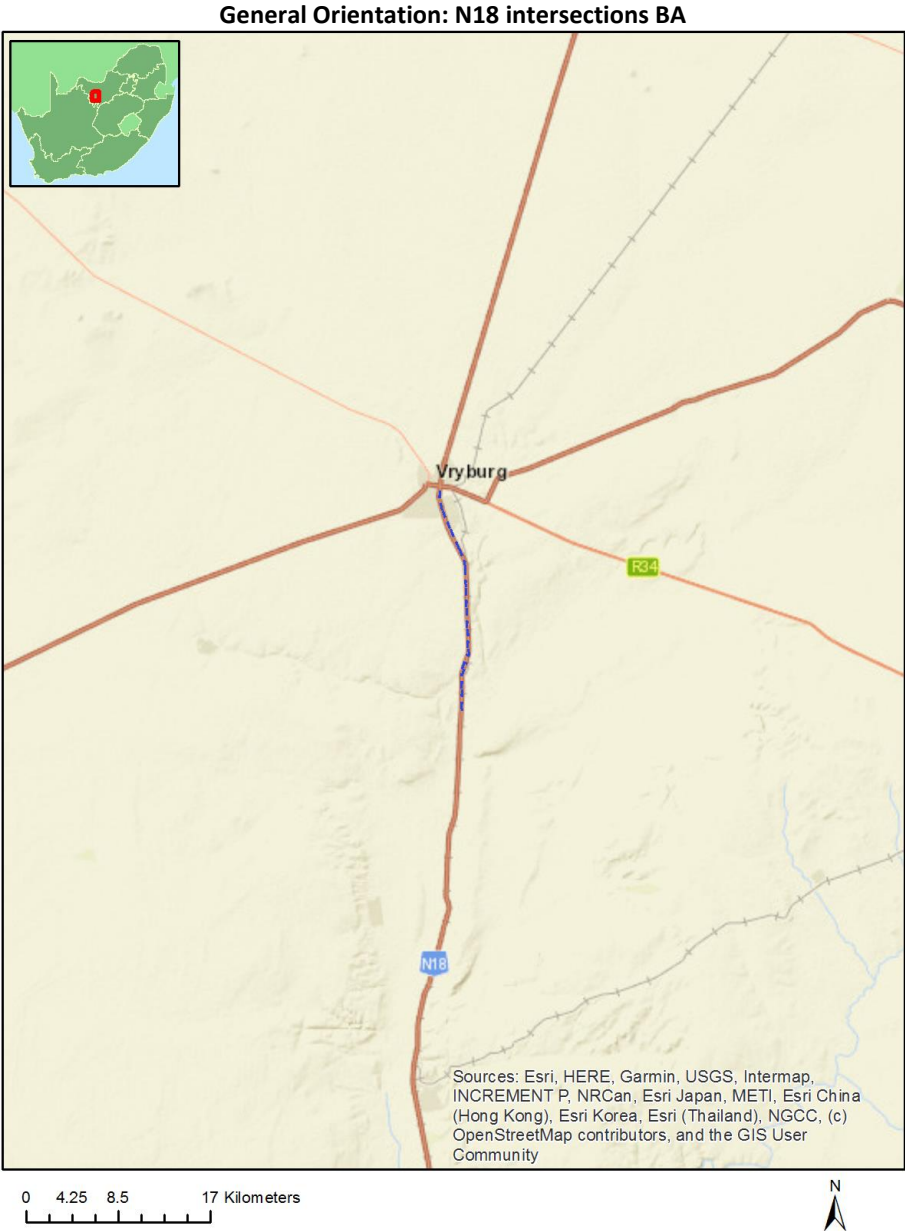
Application Category: Infrastructure | Transport Services | Roads | Public

Table of Contents

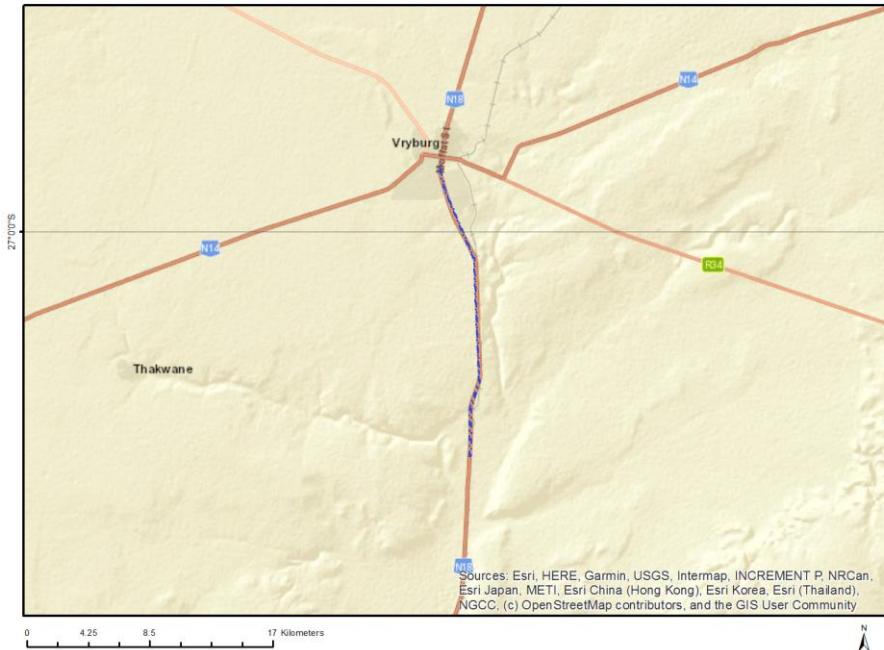
- Proposed Project Location 3
 - Orientation map 1: General location 3
- Map of proposed site and relevant area(s) 4
 - Cadastral details of the proposed site 4
 - Wind and Solar developments with an approved Environmental Authorisation or applications under consideration within 30 km of the proposed area 5
 - Environmental Management Frameworks relevant to the application 6
- Environmental screening results and assessment outcomes 6
 - Relevant development incentives, restrictions, exclusions or prohibitions 6
 - Proposed Development Area Environmental Sensitivity 6
 - Specialist assessments identified 7
- Results of the environmental sensitivity of the proposed area 9
 - MAP OF RELATIVE AGRICULTURE THEME SENSITIVITY 9
 - MAP OF RELATIVE ANIMAL SPECIES THEME SENSITIVITY 10
 - MAP OF RELATIVE AQUATIC BIODIVERSITY THEME SENSITIVITY 11
 - MAP OF RELATIVE ARCHAEOLOGICAL AND CULTURAL HERITAGE THEME SENSITIVITY 12
 - MAP OF RELATIVE CIVIL AVIATION THEME SENSITIVITY 13
 - MAP OF RELATIVE DEFENCE THEME SENSITIVITY 14
 - MAP OF RELATIVE PALEONTOLOGY THEME SENSITIVITY 15
 - MAP OF RELATIVE PLANT SPECIES THEME SENSITIVITY 16
 - MAP OF RELATIVE TERRESTRIAL BIODIVERSITY THEME SENSITIVITY 17

Proposed Project Location

Orientation map 1: General location



Map of proposed site and relevant area(s)



Cadastral details of the proposed site

Property details:

No	Farm Name	Farm/ Erf No	Portion	Latitude	Longitude	Property Type
1	HUHUDI	5146	0	26°57'49.91S	24°43'57.46E	Erven
2	HUHUDI	5137	0	26°59'14.34S	24°44'21.87E	Erven
3	HUHUDI	3457	0	26°59'7.77S	24°44'19.17E	Erven
4	HUHUDI	4377	0	26°59'12.81S	24°44'20.63E	Erven
5	HUHUDI	4378	0	26°59'16.96S	24°44'20.84E	Erven
6	VRYBURG	11880	0	26°57'51.69S	24°43'47.24E	Erven
7	VRYBURG	3221	0	26°58'9.4S	24°43'56.01E	Erven
8	VRYBURG	5145	0	26°57'45.96S	24°43'54.62E	Erven
9	VRYBURG	4835	0	26°58'50.57S	24°44'10.76E	Erven
10	VRYBURG	3455	0	26°59'10.18S	24°44'19.74E	Erven
11	HUHUDI	3221	0	26°58'11.9S	24°43'56.88E	Erven
12	VRYBURG	11880	2	26°57'46.31S	24°43'50.77E	Erven
13	VRYBURG	506	0	26°55'55.25S	24°41'47.67E	Erven
14	VRYBURG	5924	1	26°58'13.38S	24°43'50.01E	Erven
15	VRYBURG	8904	0	26°58'13.14S	24°43'55.15E	Erven
16		506	0	26°56'45.77S	24°42'17.75E	Farm
17	ROSENDAL	673	0	27°0'6.16S	24°45'0.49E	Farm
18	WATERLOO	730	0	27°2'27.94S	24°45'2.29E	Farm
19	HARTSBOOM	734	0	27°5'31.47S	24°43'43.03E	Farm
20	CHAMPIONS KLOOF	731	0	27°3'55S	24°46'48.26E	Farm
21	GAMABOT	733	0	27°7'26.02S	24°44'37.08E	Farm
22	GAMABOT	733	2	27°7'38.12S	24°44'29.18E	Farm Portion
23	HARTSBOOM	734	2	27°5'34.54S	24°45'12.94E	Farm Portion
24	ROSENDAL	673	0	27°0'45.7S	24°44'4.26E	Farm Portion
25	WATERLOO	730	3	27°2'2.75S	24°44'51.34E	Farm Portion
26	ROSENDAL	673	8	26°59'31.41S	24°44'48.51E	Farm Portion

27	CHAMPIONS KLOOF	731	1	27°4'5.13S	24°45'8.81E	Farm Portion
28	GAMABOT	733	1	27°7'20.42S	24°45'0.51E	Farm Portion
29	ROSENDAL	673	3	26°59'45.46S	24°43'57.07E	Farm Portion
30	WATERLOO	730	4	27°2'50.96S	24°44'36.96E	Farm Portion
31	HARTSBOOM	734	0	27°5'26.5S	24°43'42.97E	Farm Portion

Development footprint¹ vertices:
No development footprint(s) specified.

Wind and Solar developments with an approved Environmental Authorisation or applications under consideration within 30 km of the proposed area

No	EIA Reference No	Classification	Status of application	Distance from proposed area (km)
1	14/12/16/3/3/1/1987	Solar PV	Approved	0
2	14/12/16/3/2/893	Solar PV	Approved	0.8
3	14/12/16/3/3/2/863	Solar PV	Approved	4.5
4	14/12/16/3/3/2/750	Solar PV	Approved	12.2
5	14/12/16/3/3/2/891	Solar PV	Approved	0.8
6	14/12/16/3/3/1/506	Solar PV	Approved	0.5
7	14/12/16/3/3/2/914/AM3	Solar PV	Approved	0
8	14/12/16/3/3/2/958	Solar PV	Approved	0
9	14/12/16/3/2/891	Solar PV	Approved	0.8
10	14/12/16/3/3/2/960	Solar PV	Approved	0
11	14/12/16/3/3/2/535/AM2	Wind	Approved	0
12	14/12/16/3/3/1/1939	Solar PV	Approved	0
13	14/12/16/3/3/2/865/AM2	Solar PV	Approved	4.5
14	14/12/16/3/3/2/915	Solar PV	Approved	4.7
15	14/12/16/3/3/2/959	Solar PV	Approved	0
16	14/12/16/3/3/2/863/AM1	Solar PV	Approved	4.5
17	14/12/16/3/3/1/2413	Solar PV	Approved	0
18	14/12/16/3/3/2/915/AM4	Solar PV	Approved	4.7
19	14/12/16/3/3/1/1551	Solar PV	Approved	0.5
20	14/12/16/3/3/2/893	Solar PV	Approved	0.8
21	14/12/16/3/3/2/308	Solar PV	Approved	0.5
22	14/12/16/3/3/1/1940	Solar PV	Approved	0
23	14/12/16/3/3/2/390	Solar PV	Approved	0
24	14/12/16/3/3/1/2347	Solar PV	Approved	4.2
25	14/12/16/3/3/2/913	Solar PV	Approved	26.2
26	14/12/16/3/3/2/390/AM2	Solar PV	Approved	0
27	14/12/16/3/3/1/1805	Solar PV	Approved	0.5
28	14/12/16/3/3/2/699	Solar PV	Approved	18.2
29	14/12/16/3/3/1/2396	Solar PV	Approved	0.5
30	14/12/16/3/3/2/915/AM3	Solar PV	Approved	4.7
31	14/12/16/3/3/2/308/AM3	Solar PV	Approved	0.5
32	14/12/16/3/3/2/535/AM1	Wind	Approved	0
33	14/12/16/3/2/892	Solar PV	Approved	0.8
34	14/12/16/3/3/2/912	Solar PV	Approved	1.9

¹ “development footprint”, means the area within the site on which the development will take place and includes all ancillary developments for example roads, power lines, boundary walls, paving etc. which require vegetation clearance or which will be disturbed and for which the application has been submitted.

35	14/12/16/3/3/2/308/AM2	Solar PV	Approved	0.5
36	14/12/16/3/3/2/390/AM1	Solar PV	Approved	0
37	14/12/16/3/3/2/915/AM2	Solar PV	Approved	4.7
38	14/12/16/3/3/2/865	Solar PV	Approved	4.5
39	14/12/16/3/3/1/1941	Solar PV	Approved	0
40	14/12/16/3/3/1/2355	Solar PV	Approved	0
41	14/12/16/3/3/2/374	Solar PV	Approved	18.2
42	14/12/16/3/3/2/308/AM4	Solar PV	Approved	0.5
43	14/12/16/3/3/2/917	Solar PV	Approved	3.7
44	14/12/16/3/3/1/1551/AM3	Solar PV	Approved	0.5
45	14/12/16/3/3/2/338	Solar PV	Approved	4.2
46	14/12/16/3/3/2/865/AM3	Solar PV	Approved	4.5
47	14/12/16/3/3/1/1552	Solar PV	Approved	0
48	14/12/16/3/3/2/914	Solar PV	Approved	0
49	14/12/16/3/3/2/892	Solar PV	Approved	0.8
50	14/12/16/3/3/2/863/AM2	Solar PV	Approved	4.5
51	14/12/16/3/3/2/535	Solar PV	Approved	0

Environmental Management Frameworks relevant to the application

No intersections with EMF areas found.

Environmental screening results and assessment outcomes

The following sections contain a summary of any development incentives, restrictions, exclusions or prohibitions that apply to the proposed development site as well as the most environmental sensitive features on the site based on the site sensitivity screening results for the application classification that was selected. The application classification selected for this report is:

Infrastructure | Transport Services | Roads | Public.

Relevant development incentives, restrictions, exclusions or prohibitions

The following development incentives, restrictions, exclusions or prohibitions and their implications that apply to this site are indicated below.

Incentive, restriction or prohibition	Implication
Strategic Transmission Corridor-Northern corridor	https://screening.environment.gov.za/ScreeningDownloads/DevelopmentZones/Combined_EGI.pdf
Renewable energy development zones 6-Vryburg	https://screening.environment.gov.za/ScreeningDownloads/DevelopmentZones/Combined_REDZ.pdf
Main Electricity Transmission Substation	https://screening.environment.gov.za/ScreeningDownloads/DevelopmentZones/Distribution_Transmission.pdf

Proposed Development Area Environmental Sensitivity

The following summary of the development site environmental sensitivities is identified. Only the highest environmental sensitivity is indicated. The footprint environmental sensitivities for the

proposed development footprint as identified, are indicative only and must be verified on site by a suitably qualified person before the specialist assessments identified below can be confirmed.

Theme	Very High sensitivity	High sensitivity	Medium sensitivity	Low sensitivity
Agriculture Theme		X		
Animal Species Theme			X	
Aquatic Biodiversity Theme	X			
Archaeological and Cultural Heritage Theme	X			
Civil Aviation Theme		X		
Defence Theme				X
Paleontology Theme	X			
Plant Species Theme				X
Terrestrial Biodiversity Theme	X			

Specialist assessments identified

Based on the selected classification, and the known impacts associated with the proposed development, the following list of specialist assessments have been identified for inclusion in the assessment report. It is the responsibility of the EAP to confirm this list and to motivate in the assessment report, the reason for not including any of the identified specialist study including the provision of photographic evidence of the site situation.

No	Specialist assessment	Assessment Protocol
1	Agricultural Impact Assessment	https://screening.environment.gov.za/ScreeningDownloads/AssessmentProtocols/Gazetted General Agriculture Assessment Protocols.pdf
2	Landscape/Visual Impact Assessment	https://screening.environment.gov.za/ScreeningDownloads/AssessmentProtocols/Gazetted General Requirement Assessment Protocols.pdf
3	Archaeological and Cultural Heritage Impact Assessment	https://screening.environment.gov.za/ScreeningDownloads/AssessmentProtocols/Gazetted General Requirement Assessment Protocols.pdf
4	Palaeontology Impact Assessment	https://screening.environment.gov.za/ScreeningDownloads/AssessmentProtocols/Gazetted General Requirement Assessment Protocols.pdf
5	Terrestrial Biodiversity Impact Assessment	https://screening.environment.gov.za/ScreeningDownloads/AssessmentProtocols/Gazetted Terrestrial Biodiversity Assessment Protocols.pdf
6	Aquatic Biodiversity Impact Assessment	https://screening.environment.gov.za/ScreeningDownloads/AssessmentProtocols/Gazetted Aquatic Biodiversity Assessment Protocols.pdf
7	Noise Impact Assessment	https://screening.environment.gov.za/ScreeningDownloads/AssessmentProtocols/Gazetted Noise Impacts Assessment Protocol.pdf
8	Traffic Impact Assessment	https://screening.environment.gov.za/ScreeningDownloads/AssessmentProtocols/Gazetted General Requirement Assessment Protocols.pdf
9	Geotechnical Assessment	https://screening.environment.gov.za/ScreeningDownloads/AssessmentProtocols/Gazetted Geotechnical Assessment Protocol.pdf

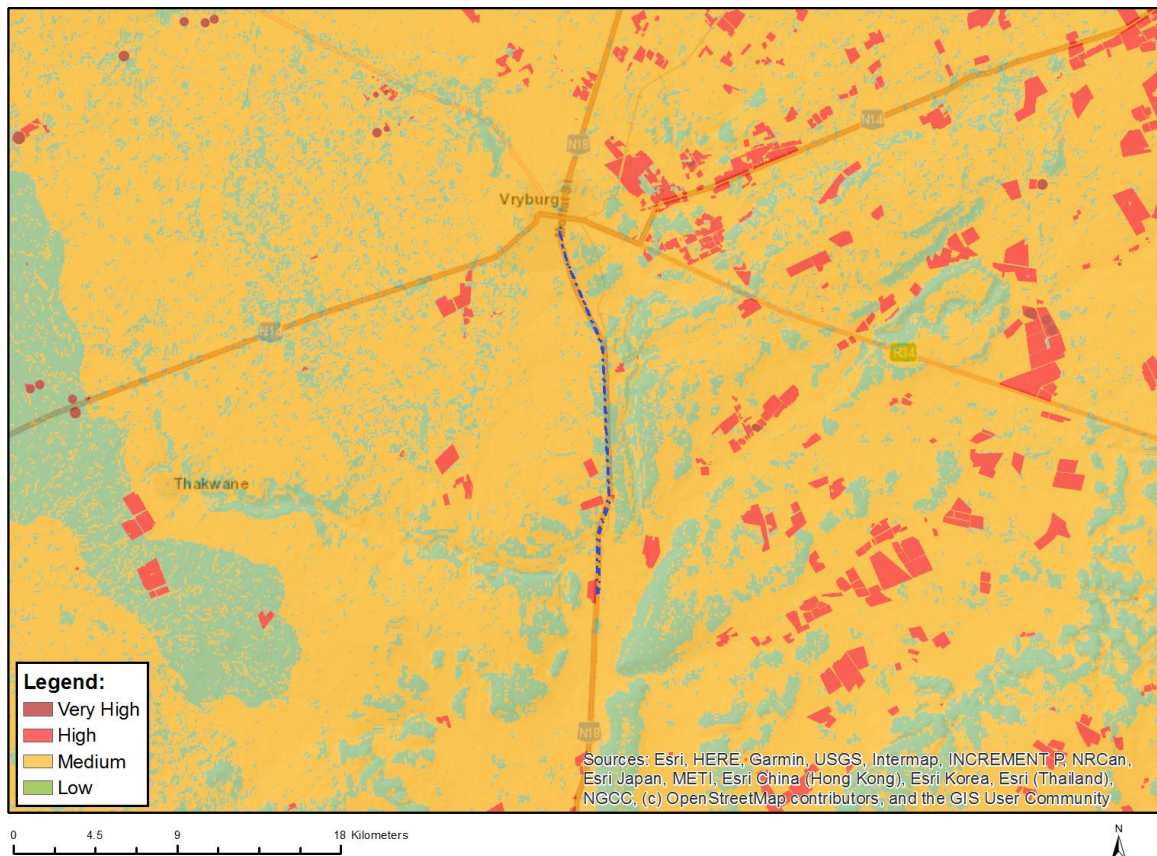
		ssmentProtocols/Gazetted_General_Requirement_Assessment_Protocols.pdf
10	Socio-Economic Assessment	https://screening.environment.gov.za/ScreeningDownloads/AssessmentProtocols/Gazetted_General_Requirement_Assessment_Protocols.pdf
11	Ambient Air Quality Impact Assessment	https://screening.environment.gov.za/ScreeningDownloads/AssessmentProtocols/Gazetted_General_Requirement_Assessment_Protocols.pdf
12	Plant Species Assessment	https://screening.environment.gov.za/ScreeningDownloads/AssessmentProtocols/Gazetted_Plant_Species_Assessment_Protocols.pdf
13	Animal Species Assessment	https://screening.environment.gov.za/ScreeningDownloads/AssessmentProtocols/Gazetted_Animal_Species_Assessment_Protocols.pdf

OFFICIAL

Results of the environmental sensitivity of the proposed area.

The following section represents the results of the screening for environmental sensitivity of the proposed site for relevant environmental themes associated with the project classification. It is the duty of the EAP to ensure that the environmental themes provided by the screening tool are comprehensive and complete for the project. Refer to the disclaimer.

MAP OF RELATIVE AGRICULTURE THEME SENSITIVITY

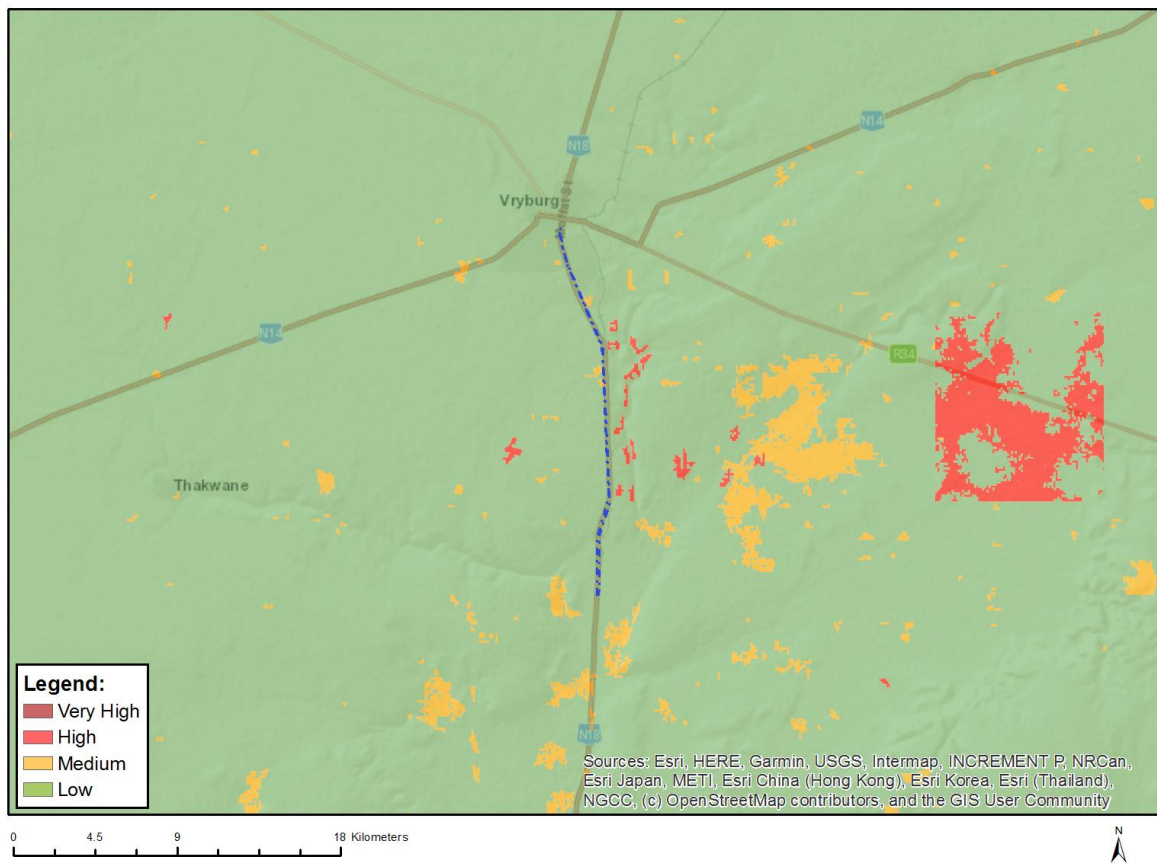


Very High sensitivity	High sensitivity	Medium sensitivity	Low sensitivity
	X		

Sensitivity Features:

Sensitivity	Feature(s)
High	Annual Crop Cultivation / Planted Pastures Rotation; Land capability; 06. Low-Moderate/07. Low-Moderate/08. Moderate
Low	Land capability; 01. Very low/02. Very low/03. Low-Very low/04. Low-Very low/05. Low
Medium	Land capability; 06. Low-Moderate/07. Low-Moderate/08. Moderate

MAP OF RELATIVE ANIMAL SPECIES THEME SENSITIVITY



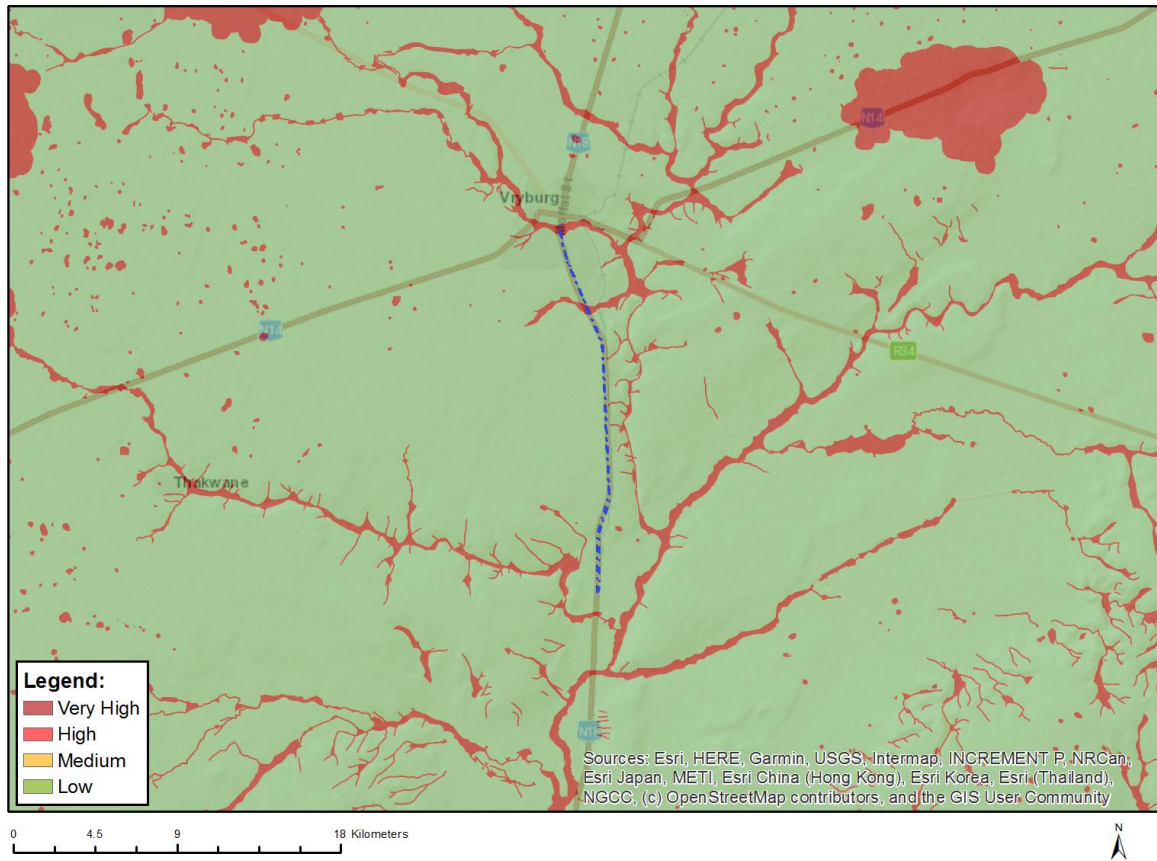
Where only a sensitive plant unique number or sensitive animal unique number is provided in the screening report and an assessment is required, the environmental assessment practitioner (EAP) or specialist is required to email SANBI at eiadatarequests@sanbi.org.za listing all sensitive species with their unique identifiers for which information is required. The name has been withheld as the species may be prone to illegal harvesting and must be protected. SANBI will release the actual species name after the details of the EAP or specialist have been documented.

Very High sensitivity	High sensitivity	Medium sensitivity	Low sensitivity
		X	

Sensitivity Features:

Sensitivity	Feature(s)
Low	Subject to confirmation
Medium	Aves-Sagittarius serpentarius

MAP OF RELATIVE AQUATIC BIODIVERSITY THEME SENSITIVITY

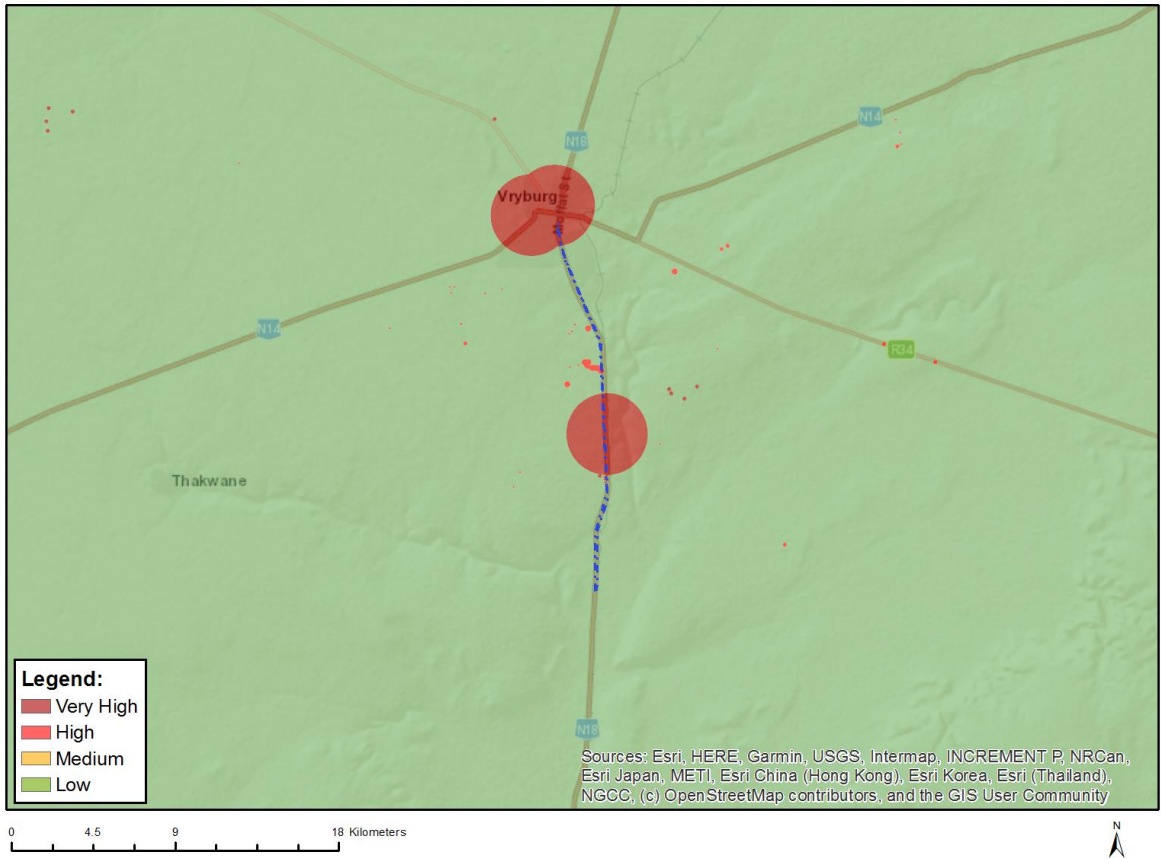


Very High sensitivity	High sensitivity	Medium sensitivity	Low sensitivity
X			

Sensitivity Features:

Sensitivity	Feature(s)
Low	Low sensitivity
Very High	ESA 1
Very High	ESA 2
Very High	Rivers_C
Very High	Wetlands_Eastern Kalahari Bushveld Bioregion (Seep)

MAP OF RELATIVE ARCHAEOLOGICAL AND CULTURAL HERITAGE THEME SENSITIVITY

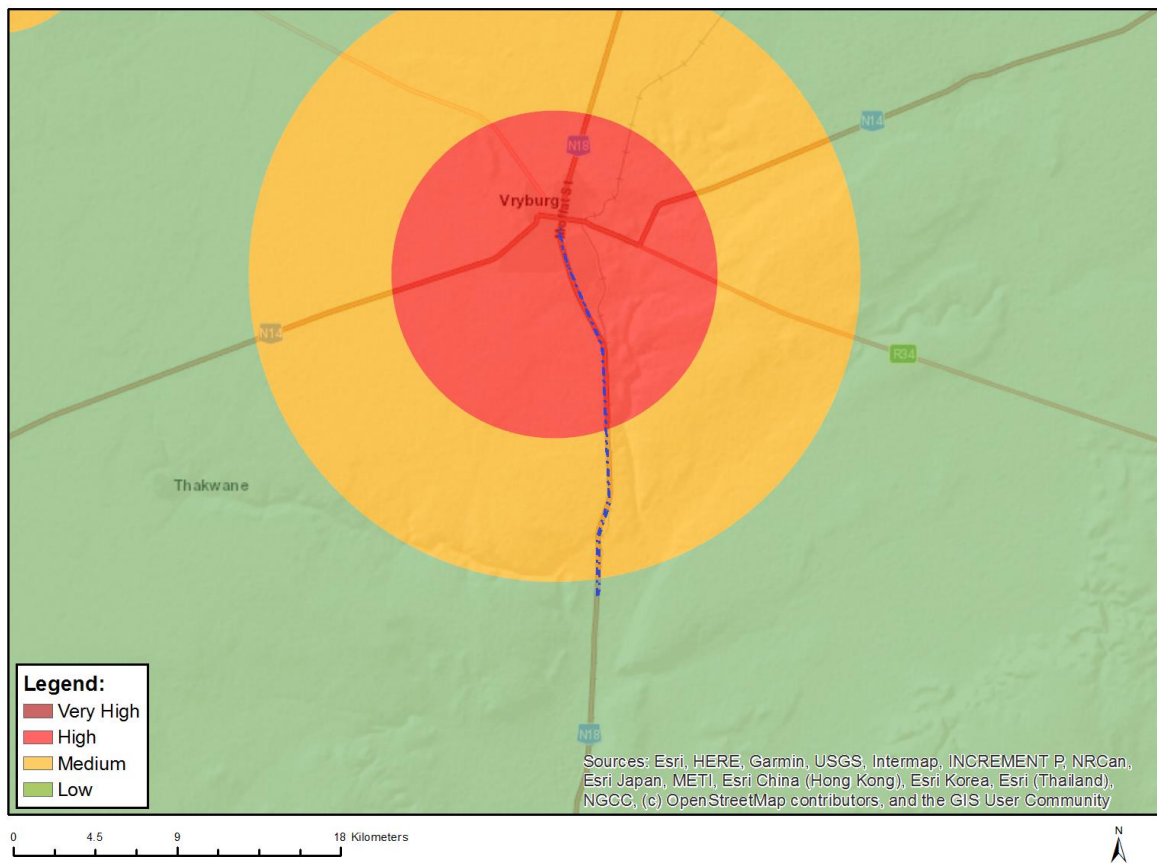


Very High sensitivity	High sensitivity	Medium sensitivity	Low sensitivity
X			

Sensitivity Features:

Sensitivity	Feature(s)
High	Within 150m of a Grade IIIa Heritage site
High	Within 50m of a Grade IIIc Heritage site
Low	Low sensitivity
Very High	Within 2km of a Grade II Heritage site

MAP OF RELATIVE CIVIL AVIATION THEME SENSITIVITY

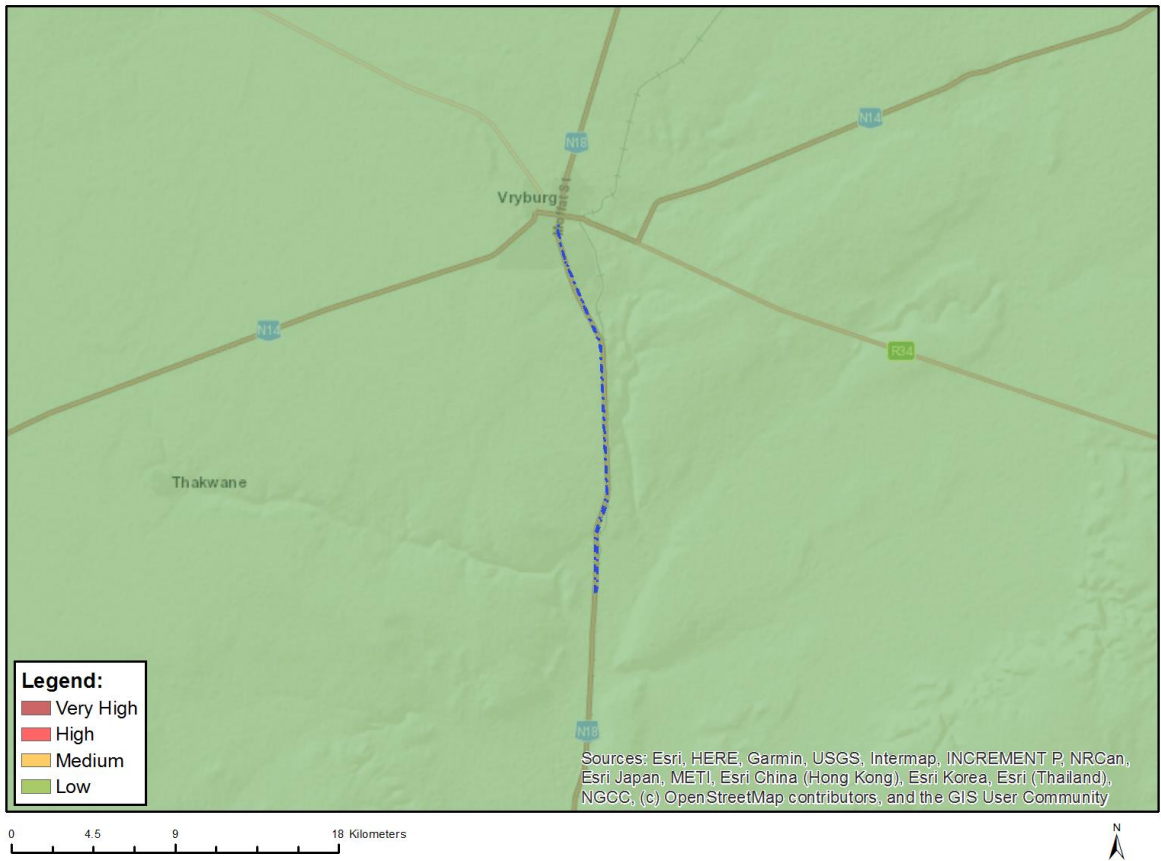


Very High sensitivity	High sensitivity	Medium sensitivity	Low sensitivity
	X		

Sensitivity Features:

Sensitivity	Feature(s)
High	Within 8 km of other civil aviation aerodrome
Low	Low sensitivity
Medium	Between 8 and 15 km of other civil aviation aerodrome

MAP OF RELATIVE DEFENCE THEME SENSITIVITY

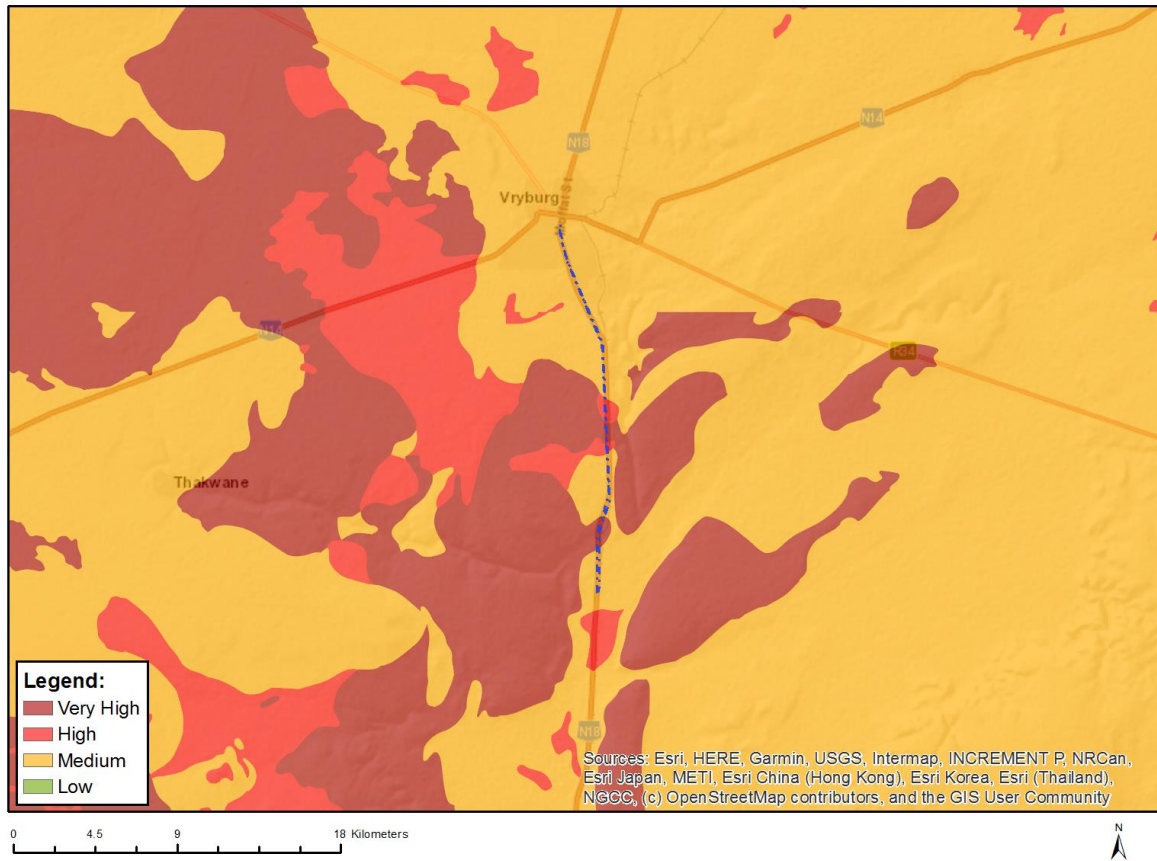


Very High sensitivity	High sensitivity	Medium sensitivity	Low sensitivity
			X

Sensitivity Features:

Sensitivity	Feature(s)
Low	Low Sensitivity

MAP OF RELATIVE PALEONTOLOGY THEME SENSITIVITY

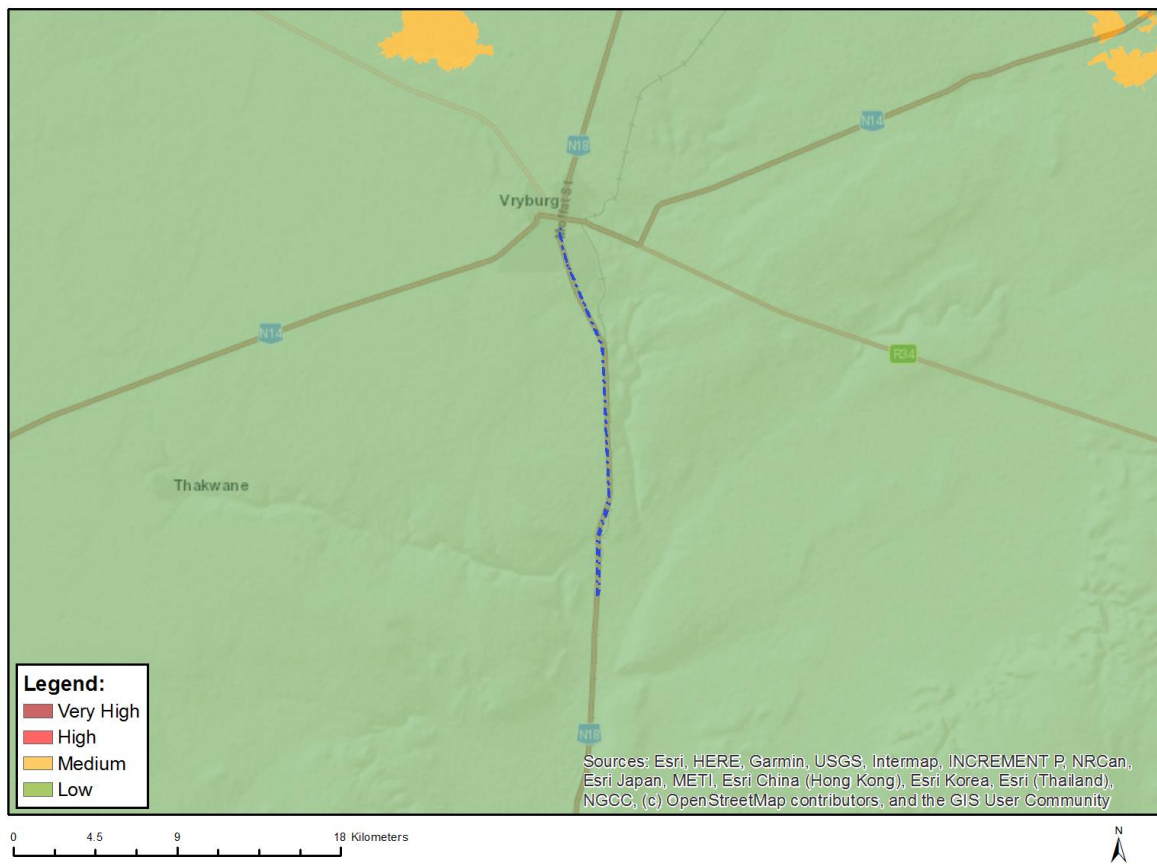


Very High sensitivity	High sensitivity	Medium sensitivity	Low sensitivity
X			

Sensitivity Features:

Sensitivity	Feature(s)
High	Features with a High paleontological sensitivity
Medium	Features with a Medium paleontological sensitivity
Very High	Features with a Very High paleontological sensitivity

MAP OF RELATIVE PLANT SPECIES THEME SENSITIVITY



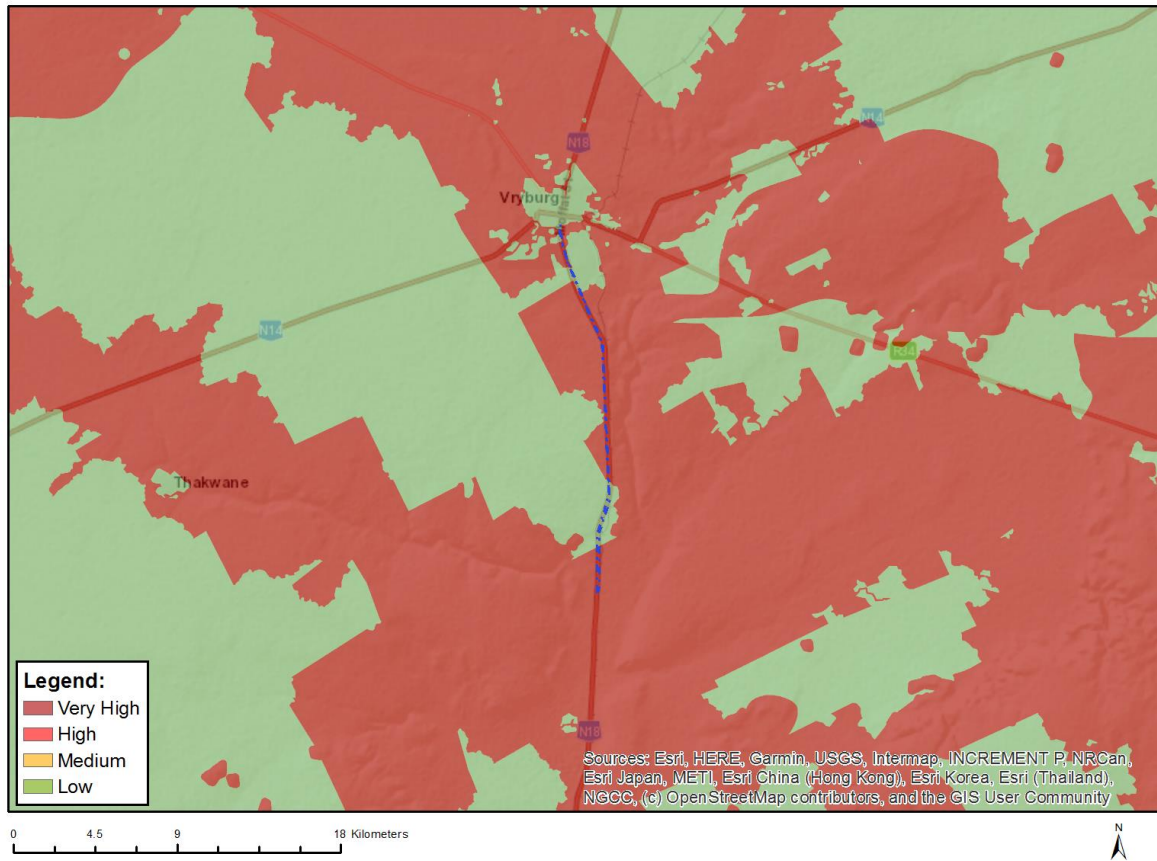
Where only a sensitive plant unique number or sensitive animal unique number is provided in the screening report and an assessment is required, the environmental assessment practitioner (EAP) or specialist is required to email SANBI at eiadatarequests@sanbi.org.za listing all sensitive species with their unique identifiers for which information is required. The name has been withheld as the species may be prone to illegal harvesting and must be protected. SANBI will release the actual species name after the details of the EAP or specialist have been documented.

Very High sensitivity	High sensitivity	Medium sensitivity	Low sensitivity
			X

Sensitivity Features:

Sensitivity	Feature(s)
Low	Low Sensitivity

MAP OF RELATIVE TERRESTRIAL BIODIVERSITY THEME SENSITIVITY



Very High sensitivity	High sensitivity	Medium sensitivity	Low sensitivity
X			

Sensitivity Features:

Sensitivity	Feature(s)
Low	Low Sensitivity
Very High	CBA 2
Very High	ESA 1
Very High	ESA 2
Very High	National Protected Area Expansion Strategy (NPAES)