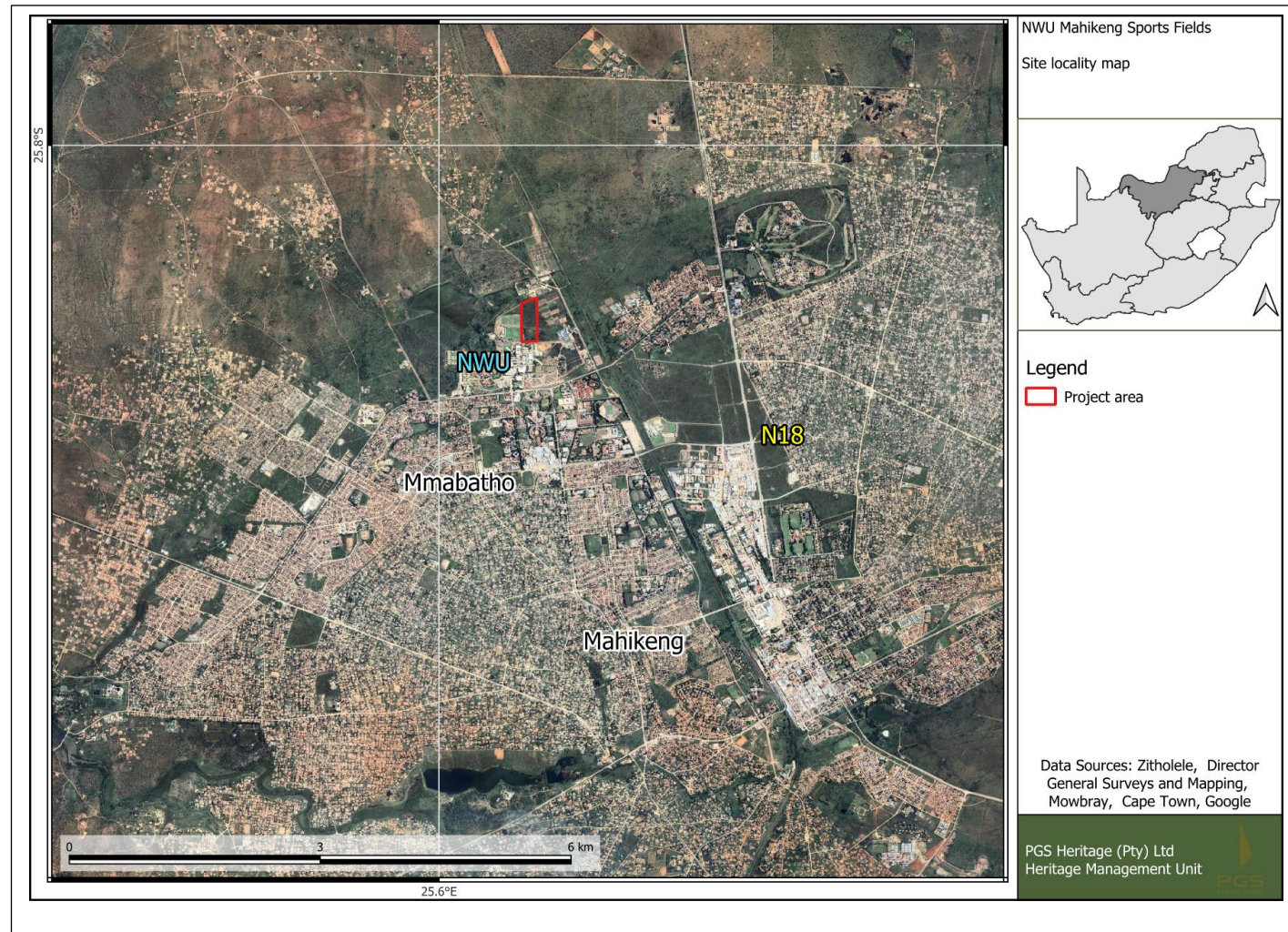


NOTIFICATION OF APPLICATION FOR ENVIRONMENTAL AUTHORISATION AND WATER USE AUTHORISATION PROCESSES FOR THE PROPOSED SPORTS FACILITY AND ASSOCIATED INFRASTRUCTURE AT THE NORTH WEST UNIVERSITY: MAHIKENG CAMPUS, ON THE REMAINDER OF ERF 1090 MMABATHO UNIT 5, NORTH WEST PROVINCE



PUBLIC COMMENT ENCOURAGED

Please submit your comments on the BAR by no later than 22 September 2025 to the contact persons/details as listed below. Information regarding the above processes can also be requested from the Public Participation Office at the contact details provided herein.

All stakeholders that wish to provide comments on the BAR and WUA processes and stay informed throughout the process are urged to register as an Interested and Affected Party (I&AP) by submitting your contact details and interest on the project to the Public Participation Process (PPP) desk at the contact details provided. Further communication relating to the project will only be undertaken with registered I&APs. The PPP desk can be contacted as follows:

Zitholele Consulting (Pty) Ltd
Contact Person: Ms. Natasha Lalie
P O Box 6002, Halfway House, 1685
Tel: (011) 207 2060, Fax: 086 674 6121

Notice is hereby given that North West University (NWU) Mahikeng Campus (the Applicant) has applied for Environmental Authorisation (EA) for the above project. An EA is required by way of a Basic Assessment (BA) Process, from the Competent Authority, i.e. North West Department of Economic Development, Environment, Conservation and Tourism (NW EDEC&T) in terms of the Environmental Impact Assessment (EIA) Regulations, 2014 (as amended), promulgated in terms of the National Environmental Management Act, 1998 (Act 107 of 1998) (NEMA). Zitholele Consulting (Pty) Ltd is the independent Environmental Assessment Practitioner (EAP) for the BA process.

Nature of Proposed Activity

The North West University (NWU) Mahikeng Campus plans to establish hockey and cricket sports facilities adjacent to the existing soccer and rugby sports fields at the Mahikeng Campus. Pavilions, change-rooms, club houses, parking areas, access roads on site and future sports fields are also planned. These sports facilities/fields will have grass fields with adequate irrigation and lighting.

Legislative requirements

In terms of Listing Notice 1 (GNR No. 327) of the EIA regulations, 2014 (as amended) the proposed development will trigger listed activities 19 and 27, and listed activities 12 and 14 of Listing Notice 3 (GNR No. 324). The proposed sports facility and associated infrastructure occurs within the 100m regulated area of natural non-perennial drainage lines. Therefore, a Water Use Authorisation (WUA) will be required in terms of Section 21(c) and 21(i) of the National Water Act, 1998 (Act No. 36 of 1998).

A Basic Assessment and Water Use Authorisation process will therefore be undertaken to authorise the proposed activities associated with the proposed development.

Draft Basic Assessment Report for Public Review

The Draft Basic Assessment Report (BAR) provides more details of the project and is available for public review and comment from 20 August 2025 to 22 September 2025 at the Mahikeng Library, Robinson Street, Golf View, Mahikeng, 2745, and on the Zitholele Consulting's website: [www.zitholele.co.za/environmental/under the heading "NWU Sports Facility"](http://www.zitholele.co.za/environmental/under%20the%20heading%20%E2%80%9C%E2%80%9C).