

Zitholele Consulting (Pty) Ltd

Reg. No. 2000/000392/07

PO Box 6002 Halfway House 1685, South Africa
Building 1, Maxwell Office Park, Magwa Crescent West
c/o Allandale Road & Maxwell Drive, Waterfall City, Midrand
T : 011 207 2060 W : www.zitholele.co.za E : mail@zitholele.co.za

**Our Ref: 25044-83-let-001****20 August 2025****Dear Interested and affected party**

Dear Sir/Madam,

PROPOSED SPORTS FACILITY AND ASSOCIATED INFRASTRUCTURE AT THE NORTH WEST UNIVERSITY: MAHIKENG CAMPUS, ON THE REMAINDER OF ERF 1090 MMABATHO UNIT 5, NORTH WEST PROVINCE

- NOTIFICATION OF AVAILABILITY OF DRAFT BASIC ASSESSMENT REPORT FOR PUBLIC REVIEW AND COMMENT**

Notice is hereby given that North West University (NWU) Mahikeng Campus (the Applicant) has applied for Environmental Authorisation (EA) for the above project. An EA is required by way of a Basic Assessment (BA) Process, from the Competent Authority, i.e. North West Department of Economic Development, Environment, Conservation and Tourism (NW EDEC&T) in terms of the Environmental Impact Assessment (EIA) Regulations, 2014 (as amended), promulgated in terms of the National Environmental Management Act, 1998 (Act 107 of 1998) (NEMA). Zitholele Consulting (Pty) Ltd is the independent Environmental Assessment Practitioner (EAP) for the BA process.

NWU proposes the establish Hockey and Cricket sports facilities (the "additional sports fields") in addition to the existing soccer and rugby sports fields at the Mahikeng Campus. Pavilions, change-rooms, club houses, parking lots, and access roads etc. are also planned in the future development of these additional sports fields. These additional sports fields will have grass fields with adequate irrigation and high-mast lighting.

In terms of Listing Notice 1 (GNR No. 327) of the EIA regulations, 2014 (as amended) the proposed development will trigger listed activities 19 and 27, and listed activities 12 and 14 of Listing Notice 3 (GNR No. 324). The proposed sports facility and associated infrastructure occurs within the 100m regulated area of natural non-perennial drainage lines. Therefore, a Water Use Authorisation (WUA) will be required in terms of Section 21(c) and 21(i) of the National Water Act, 1998 (Act No. 36 of 1998).

The Draft Basic assessment will be available for public review from **20 August 2025 to 22 September 2025**.

- **AVAILABILITY OF DRAFT BASIC ASSESSMENT REPORT**

The Draft Basic Assessment Report and associated Appendices are available at the following public venue and virtual location to peruse and download:

- Mahikeng Library, Robinson Street, Golf View, Mahikeng, 2745
- Zitholele Consulting's website: www.zitholele.co.za/environmental/ under the heading "NWU Sports Facility".

An electronic copy of the report can be made available on request at email address: nwusports@zitholele.co.za

- **SUBMIT YOUR COMMENTS**

All stakeholders that wish to be part of this process, provide comments on the draft BAR and WUA Process, and stay informed throughout the process are urged to register as an Interested and Affected Party (I&AP) by submitting your contact details and interest on the project to the Public Participation Process (PPP) desk at the contact details provided. The PPP desk can be contacted as follows: Zitholele Consulting (Pty) Ltd, Ms. Natasha Lalie, P.O. Box 6002, Halfway House, 1685, Tel: 011 207 2060, Fax: 086 674 6121, E-mail: nwusports@zitholele.co.za

- **DETAILS OF THE PPP DESK**

I&APs may contact the PPP desk at the details below:

Ms. Natasha Lalie

Zitholele Consulting (Pty) Ltd

Tel: (011) 207 2060

Fax: 086 674 6121

Email: nwusports@zitholele.co.za

Yours faithfully,

Project Manager

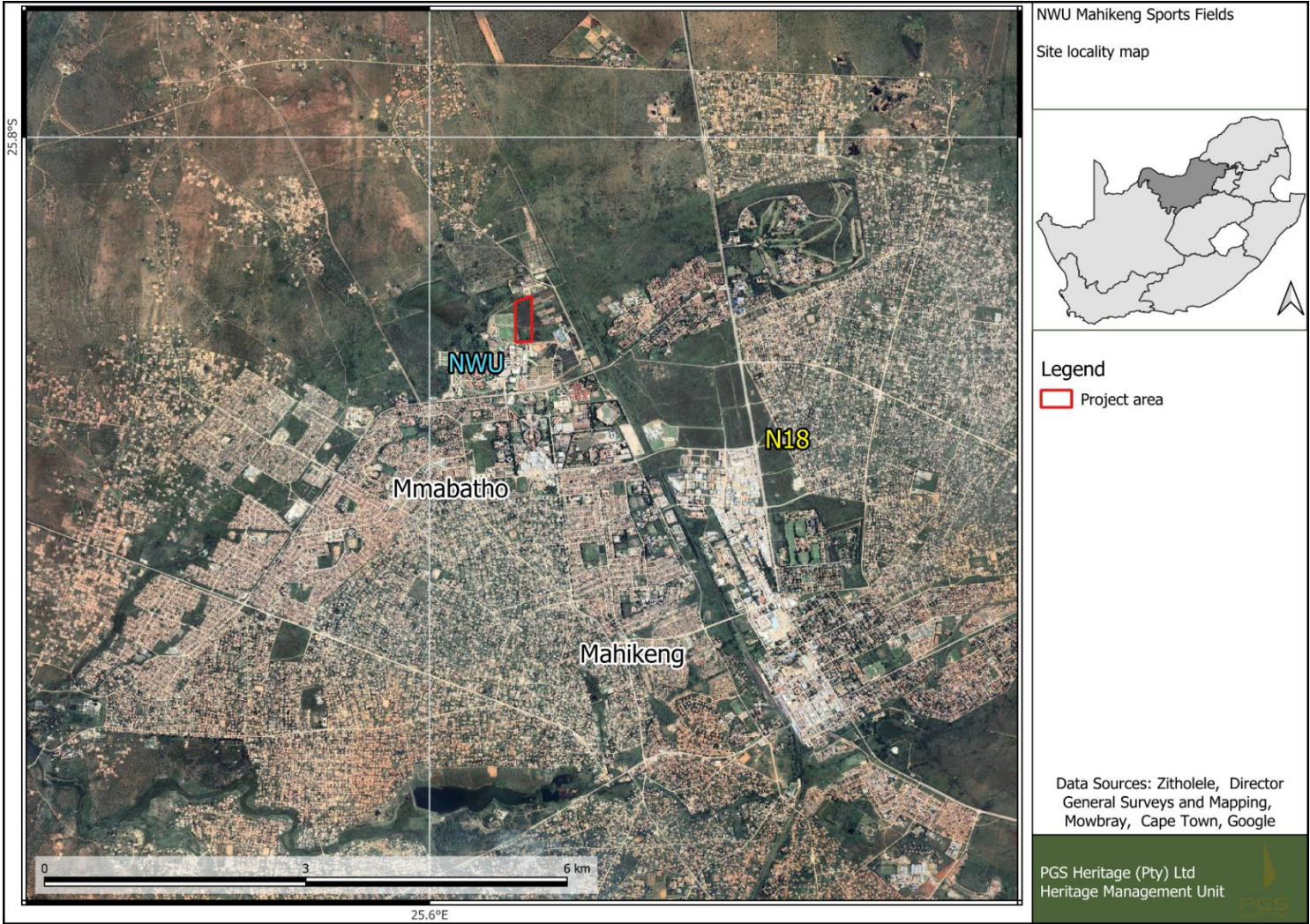


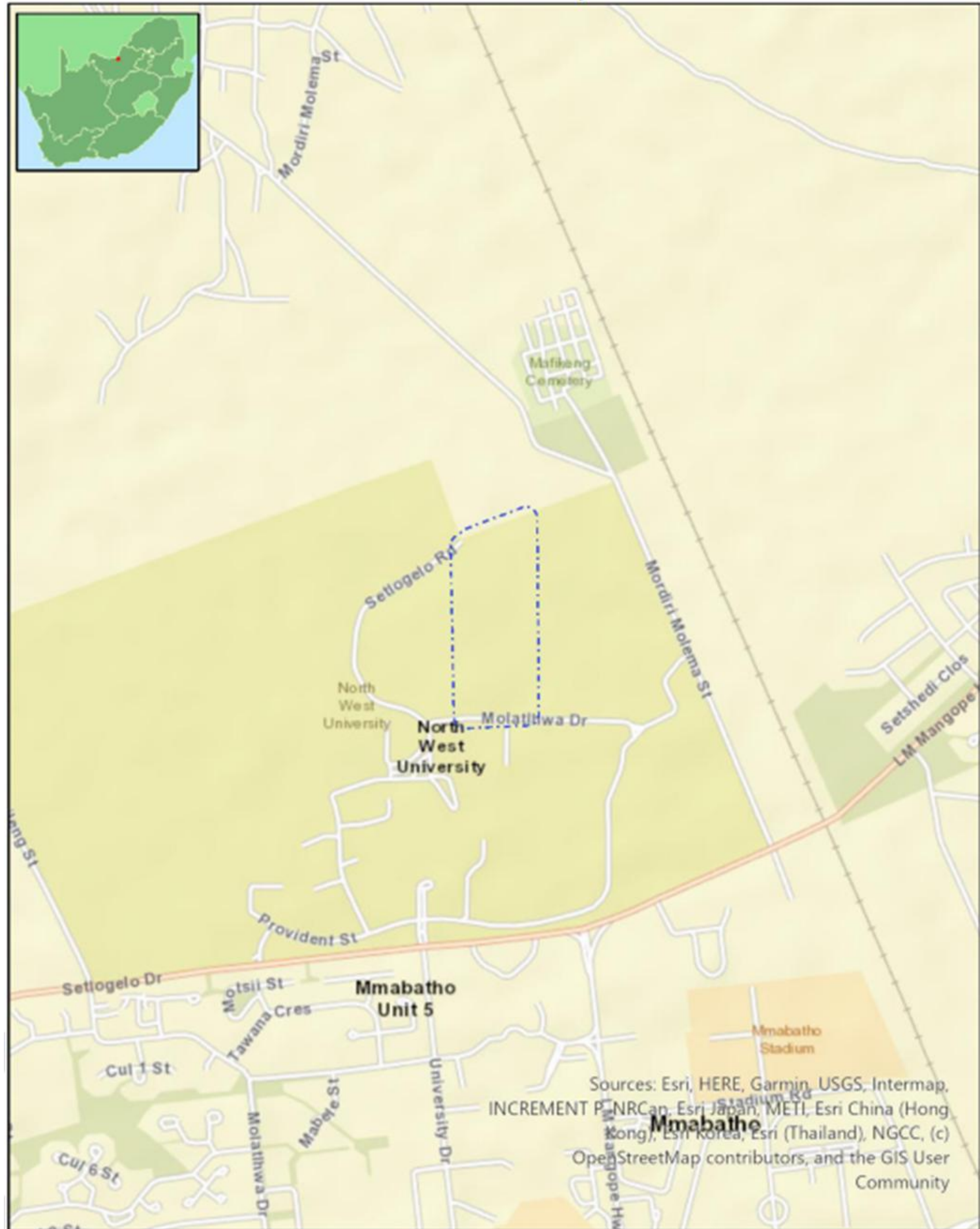
Ms. Natasha Lalie

ZITHOLELE CONSULTING (PTY) LTD

Attachments : Locality Map

Z:\Projects\25044 – NWU BA\8 Stakeholder Engagement\83 Notification & Newsletters\25044-31-let-001-Notification letter – DBAR-Rev0. Draft1.docx





Sources: Esri, HERE, Garmin, USGS, Intermap, INCREMENT P, NRCan, Esri Japan, METI, Esri China (Hong Kong), Esri Korea, Esri (Thailand), NGCC, (c) OpenStreetMap contributors, and the GIS User Community